

Australian **Knitting**
Yarn • Embellishments • Patterns

20
**BEAUTIFUL
PATTERNS**

All the latest
knitting, fashion
and news

Cool
SUMMER
Projects

MAKE YOUR OWN
**SCARVES, CARDIGANS,
SHAWLS AND CROCHET TOPS**

HEAPS OF TIPS, TECHNIQUES AND IDEAS

Contents

Issue Vol 17 No 4



20



23



13



Feature

4 **Fashion** – Trends

Patterns

8 **Crochet Tank** – Patons Yarns

9 **Lacy Sleeveless Sweater** –
Naturally Yarns

10 **Crocheted Lace Silk Scarf** –
Kaaland Yarns

11 **Lace Shell Top** – Jo Sharp

12 **X Stitch Beanie** – Kaaland Yarns

13 **V-neck Sweater** – Jo Sharp

13 **Men's Ribbed Sweater** – Jo Sharp

14 **Sun Cushion** – Patons

16 **Sweater, Cardigan or Gilet** –
Naturally Yarns

19 **Striped Vest** – Biggan

20 **Garter Ridge Cushions** –
Jo Sharp

22 **Scarf or Shoulderette** –
Knitting Yarns by Mail

23 **Mesh Tops** – Naturally Yarns

24 **Ribbed Scarf** – Jo Sharp

25 **Motif Top** – Patons

26 **Crochet Hat and Rucksack** –
Naturally Yarns



- 28 **Short Sleeved Cardigan –**
Naturally Yarns
- 31 **Textured Vest –** Patons
- 35 **Sweater and Hat –**
Naturally Yarns
- 37 **Hexagon Throw –**
Cleckheaton Yarns
- 34 **Ear Warmer –**
Knitting Yarns by Mail
- 34 **Waves of the Otways –**
Knitalpaca
- 35 **Cropped Top –** Panda Yarns
- 36 **Crochet Motif Cardigan –**
Naturally Yarns
- 38 **Instructions for patterns**



Fashion Trends

by Danielle Ryan

Breeze into summer with the latest knitwear looks for the season. As the sun warms up our garments get lighter, but that doesn't mean the fun stops for knitters.

There is inspiration aplenty to keep you going this summer!



© We Are Knitters

Hualpa kimono

Knits for summer

Wondering what to knit for summer? Keep your garments lightweight and breezy to get your wardrobe up-to-speed for the warmer months ahead. Top trends in the realm of knitting and fashion include:

- **Kimono:** This garment is perfect for so many reasons. It can be worn at the beach or with a summer dress to add an effortless touch of boho chic. *Pattern inspiration: The Hualpa Kimono from We Are Knitters is the ideal knitted kimono for the summer season <http://www.weareknitters.com/>*
- **Circle skirt:** The circle skirt brings plenty of nostalgia for many, as its



Circle skirt

© The Sweatshop of Love



shape is reminiscent to those of the 50s. The circle skirt is back in full swing this season! Knit your own circle skirt to extend your summer wardrobe options. *Pattern inspiration: The New Girl circle skirt pattern by The Sweatshop of Love shows how easy it can be to create your own knitted circle skirt <https://www.kollabora.com/supplies/new-girl>*

- **Tank top:** If you feel you need simplicity in your wardrobe, you can't go passed a knitted tank top for summer. Effortless garments such

as the tank top allow you to pull together an outfit in an instance. *Pattern inspiration: The Tulip Tank Top by Purl Soho takes the structure of a regular tank top and adds beauty and femininity to create a 'tulip structure' that wraps and overlaps <https://www.purlsoho.com/create/2014/06/27/lauras-loop-tulip-tank-top/>*

- **Striped t-shirt:** Lightweight stripes are the definition of summer style. Create your own striped tee in a summery cotton for warm weather days. *Pattern inspiration: The Striped*

Breathless Sweater by Stefanie Fail makes a simple yet fashionable statement <http://www.ravelry.com/patterns/library/striped-breathless-sweater>

- **Lace shrug:** Toss a pretty knitted shrug over your shoulders for a wedding, party or any fancy occasion you have coming up this summer. *Pattern inspiration: Liza's Cardi Shrug by Vicarno Crochet designs is your all season basic cardi shrug. It's soft, comfortable and absolutely versatile <https://www.kollabora.com/supplies/liza-s-cardi-shrug>*



Tulip tank top



Striped Breathless Sweater



Liza's Cardi Shrug

Feature

Fact File

Knitting has been practiced as a trade and eventually as pastime over thousands of years. You might be interested to know that the familiar knitting terms you use on a regular basis have a whimsical and historical background. We explain the story behind some of the more common terms used in knitting:

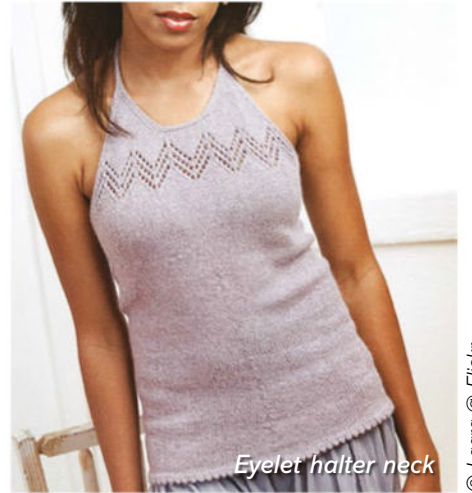
- **Knit:** The verb knit has been used in English since around 1000AD. The word derives from the Old English word *cnyttan*, which means “to tie in a knot”. By the 1300s, the verb referred to tying string or thread into a net and in 1530, we have our first use of knit to refer to the creation of an object by weaving together a series of interlocking loops using two needles.
- **Purl:** This word first referred to gold and silver thread used for embroidery and then for the embroidery itself. The first use of the word in reference to the knitting stitch is said to come from the first written knitting pattern extant “Nature exenterate”, a pattern for making stockings from the collection of cures.
- **Swatch:** Knitters will know that a swatch is a small square of fabric that is knitted in the given pattern using the needles and yarn intended for that project. Did you know that the word first entered the English language in the 1500s and was used to name a tag or tally people attached to cloth that they were sending to the dryer? Eventually the word would come to be applied to any small sample of fabric.

Continued ►



© pickles.no

Later Summer Sweater



© Laara @ Flickr

Eyelet halter neck

- **Halter neck top:** A popular summer wardrobe item for so many reasons! Not only does the halter neck top show skin in an unexpected way by highlighting your collarbone and shoulders, the conservative neckline offers so many options for embellishment all while maintaining a sophisticated look. *Pattern inspiration: The Eyelet Halter by Laura Grutzeck is the ideal balance of casual yet sophisticated <http://www.ravelry.com/patterns/library/eyelet-halter>*
- **Summer sweater:** Occasionally the winter chill might present itself during the transition into summer. The best between-season solution is a lightweight knit that can be tossed over a cami, then tied around the waist when the sun decides to warm up. *Pattern inspiration: The Later Summer Sweater by pickles.no*

is fashionable and breezy <http://www.pickles.no/late-summer-sweater/>

Colours

Summertime is the moment to get inspired by adventurous colour. If you're wanting to get creative and utilise a fun and vibrant colour palette combination for summer, think along the lines of Pink Peony, Mint Green, Apricot Orange and Canary Yellow shades. For a softer, more cool look during summer opt for shades in mauves, blues, violets and pinks. We're taking inspiration from the latest Mighty Stitch yarn shades, “Pucker”, “Canary” and “Macaw” which exude summer fun and happiness. Australian Superfine Merino has also launched two new exciting colours, “Vintage Pink” and “Amber”, both rich and vibrant shades which are perfect for the season.



From left to right: Pucker, Canary and Macaw by Mighty Stitch

KnitPicks.com



From left to right: Amber and Vintage Pink yarn from Australian Superfine Merino

“Summertime is the moment to get inspired by adventurous colour.”



© Shutterstock/Kostikova Natalia

DESIGNER TO WATCH – Jason Wu

New York-based designer Jason Wu has been named as The Woolmark Company’s ambassador to help promote the use of Australian merino wool. Two months before Wu’s Spring/Summer 2017 collection was sent down the runway at New York Fashion Week, the New York-based fashion designer was in Australia visiting the source of Merino wool – the natural, renewable and biodegradable fibre which lies at the heart of his latest collection.

Visiting a wool-producing property in Marulan, New South Wales, Wu was able to experience the fibre first-hand as he journeyed to the heart of wool-growing country. Pursuing a sophisticated, timeless and seasonless collection, Wu produced a wool-rich collection with many of the pieces gaining Woolmark certification.

For more information on Jason Wu’s involvement with The Woolmark Company, visit www.woolmark.com



© The Woolmark Company

Continued ►

- **Cardigan:** A popular item crafted by knitters, cardigans have been around since knitting was recognised as a trade, and long before it became a craft. In fact, the cardigan was named after the seventh earl of Cardigan, a former country in Wales. James Thomas Brudnell was known throughout his lifetime as a sartorially savvy gentleman and his name was originally applied to a knitted wool vest, split down the front, that kept the cold away during the Crimean winters. Overtime the term cardigan was used to name any similar knitted vest or sweater.
- **Raglan:** Interestingly, the term credits the name of Cardigan’s commanding officer, the first Baron Raglan, Fitzroy James Henry Somerset. Raglan was known for wearing a loose-fitting overcoat with sleeves that extended to the neckline. The word originally referred to the overcoat, however now it can also refer to the style of sleeve or garment that has raglan sleeves.
- **Yoke:** Referring to the fitted or shaped piece at the shoulders of a garment, the meaning of yoke is considerably recent – dating back to the 1880s. The term is an extension of the word that refers to the wooden frame used to link two working animals together.
- **Intarsia:** A technique for knitting a large multi-coloured design that uses different balls of yarn, intarsia originally referred to a wooden mosaic made of different woods that are fitted together inside a frame.

(ref: <http://www.merriam-webster.com/words-at-play/10-knitting-words>)

Patterns



Crochet Janke



Lucy Sleeveless Sweater -



Patterns



Crocheted Lace Silk Scarf^s



Lace Shell Top -



Patterns



K Stitch Beanie



V-neck Sweater



Projects

Sun Cushion

An easy crochet cushion. Design by Patons

YARN

- 2 balls 50gm Patons Cotton Blend 8ply colour 1 (C1) – Linen 33
- 1 ball 50gm Patons Cotton Blend 8ply colour 2 (C2) – Cloud 34
- 1 ball 50gm Patons Cotton Blend 8ply colour 3 (C3) – Yellow 6
- 1 ball 50gm Patons Cotton Blend 8ply colour 4 (C4) – Coral 26
- 4 balls 50gm Patons Cotton Blend 8ply colour 5 (C5) – Pink 15
- 1 ball 50gm Patons Cotton Blend 8ply colour 6 (C6) – Aqua 17
- 45cm diameter circular cushion insert or fabric and polyester fibrefill to make insert.

NEEDLES AND TOOLS

- 3.50mm crochet hook
- Wool sewing needle

MEASUREMENTS

Size approx 45cm across

TENSION

First 3 rounds of Cushion Front measure 7cm across, using 3.50mm hook

GETTING STARTED

Note: Australian/UK terminology used throughout.

WORKING PATTERN

FRONT

Using 3.50mm hook and C1, make 4ch.

Round 1: Miss 3ch, 11tr in last ch, sl st in 3rd ch at beg. 12tr (counting 3ch as 1tr throughout).

Round 2: 3ch, 1tr in same st as sl st, 2tr in each tr to end, sl st in 3rd ch at beg. 24tr.

Round 3: 3ch, 1tr in same st as sl st, 1tr in next tr, * 2tr in next tr, 1tr in next tr, rep from * to end, sl st in 3rd ch at beg. 36tr.

Round 4: 3ch, 1tr in same st as sl st, 1tr in each of next 2tr, * 2tr in next tr, 1tr in each of next 2tr, rep from * to end, sl st in 3rd ch at beg. 48tr.

Round 5: 3ch, 1tr in same st as sl st, 1tr in each of next 3tr, * 2tr in next tr, 1tr in each of next 3tr, rep from * to end, sl st in 3rd ch at beg. 60tr.

Round 6: 3ch, 1tr in same st as sl st, 1tr in each of next 4tr, * 2tr in next tr, 1tr in each of next 4tr, rep from * to end, sl st in 3rd ch at beg. 72tr.

Working an extra tr between inc each time (as before), work a further 4 rounds. 120tr.

Round 11: 3ch, 1tr in same st as sl st, 1tr in each of next 9tr, * 2tr in next tr, 1tr in each of next 9tr, rep from * to end, sl st in 3rd ch at beg. 132tr. **

Begin Inner Frill

Round 12: Working into front loops only, 1ch, (1dc, 3ch, 3tr) in same st as sl st, miss 3tr, * (1dc, 3ch, 3tr) in next tr, miss 3tr, rep from * to end, using C2, sl st in dc at beg.

Begin Stripes

Round 13: Working into back loops only of 11th round, 3ch, 1tr in same st as sl st, 1tr in each of next 10tr, * 2tr in next tr, 1tr in each of next 10tr, rep from * to end, sl st in 3rd ch at beg. 144tr.

Note: Work tr in rem rounds in both loops.

Round 14: 3ch, 1tr in same st as sl st, 1tr in each of next 11tr, * 2tr in next tr, 1tr in each of next 11tr, rep from * to end, using C3 sl st in 3rd ch at beg. 156tr.

Round 15: 3ch, 1tr in same st as sl st, 1tr in each of next 12tr, * 2tr in next tr, 1tr in each of next 12tr, rep from * to end, sl st in 3rd ch at beg. 168tr.

Round 16: 3ch, 1tr in same st as sl st, 1tr in each of next 13tr, * 2tr in next tr, 1tr in each of next 13tr, rep from * to end, using C4 sl st in 3rd ch at beg. 180tr.

Working an extra tr between inc each time (as before), work a further 8 rounds in stripes of 2 rounds each C4, C5, C2 and C6. 276tr.
Do not fasten off or break off C6.

BACK

Using 3.50mm hook and C5 throughout, work as for Front to **. Working an extra tr between inc each time (as before), work a further 12 rounds. 276tr.
Fasten off.

JOIN BACK AND FRONT PIECES

Placing WS of Back and Front tog, with RS of Front facing, using 3.50mm hook and C6 (still attached to Front) for rem, working through both thicknesses and enclosing cushion insert, proceed as follows:
Next Round: 1ch, 1dc in each corresponding tr to end, sl st in dc at beg.

Begin Outer Frill

Next Round: 1ch, (1dc, 3ch, 3tr) in same st as sl st, miss 3dc, * (1dc, 3ch, 3tr) in next dc, miss 3dc, rep from * to end, sl st in dc at beg. Fasten off.

EYES (MAKE 2)

Using 3.50mm hook and C4, make 22ch.

Row 1: Miss 1ch, * (1dc, 3ch, 3tr) in next ch, miss 3ch, rep from * to last ch, sl st in last ch. Fasten off.

NOSE

Using 3.50mm hook and C3, make 2ch.

Row 1: Miss 1ch, 3dc in last ch.

Row 2: 1ch, 1dc in first dc, 2dc in next dc, 1dc in last dc. 4dc.

Row 3: 1ch, 1dc in first dc, 2dc in next dc, 1dc in each of next 2dc. 5dc.

Row 4: 1ch, 1dc in each of next 2dc, 2dc in next dc, 1dc in each dc to end. 6dc.

Row 5: 1ch, 1dc in each dc to end.

Row 6: As row 4. 7dc.

Row 7: As row 5.

Row 8: 1ch, 1dc in each of first 3dc, 2dc in next dc, 1dc in each dc to end. 8dc.

Row 9: As row 5.

Row 10: As row 8. 9dc. Fasten off.

MOUTH

Using 3.50mm hook and C4, make 10ch. Fasten off.

MAKING UP

Do not press. Sew eyes, nose and mouth in position as pictured.

Patons

Ph: 1800 337 032

www.patonsyarns.com.au



 **Patons**

Sweater, Cardigan or Gilet

This design can be made with or without a hood

YARN

Sweater or Cardigan with or without hood

- 3, 3, 4, 4, 4, 5 balls 100gm Wendy Supreme Luxury Cotton or Wendy DK with Wool

Gilet with or without hood

- 2, 2, 3, 3, 3, 3 balls 100gm Wendy Supreme Luxury Cotton or Wendy DK with Wool
- 26, 31, 36, 41, 46, 46cm open ended zip for cardigan and gilet

NEEDLES AND TOOLS

3.25mm knitting needles
4.00mm knitting needles
Stitch holder

MEASUREMENTS

Size: 2-3, 4-5, 6-7, 8-9, 10-11, 12-13 years

To fit chest: 56, 61, 66, 71, 76, 81cm

Finished fit: 61, 66, 72, 77, 83, 88cm

Garment length: 33, 38, 44, 49, 54, 54cm

Sleeve length: 20, 26, 30, 34, 38, 42cm

TENSION

22 sts by 31 rows over patt on 4.00mm needles to 10 cm

WORKING PATTERN

SWEATERS

BACK

Using 3.25mm needles, cast on 67 (73, 79, 85, 91, 97) sts.

Row 1: RS - K.1, * P.1, K.1, rept. from * to end.

This row forms moss st. Work a further 5 rows in moss st finishing on a WS row. Change to 4.00mm needles.

Beg patt.

Row 1: RS - K5 (0, 3, 6, 1, 4), * P1, K7, rept. from * to last 6 (1, 4, 7, 2, 5) sts., P1, K5 (0, 3, 6, 1, 4).

Row 2: P4 (0, 2, 5, 0, 3), K1 (0, 1, 1, 1, 1), P1, K1, * P5, K1, P1, K1, rept from * to last 4 (7, 2, 5, 0, 3) sts, P4 (5, 2, 5, 0, 3), (K.1, P.1) 0 (1, 0, 0, 0, 0) time.

These 2 rows form patt.

Continue in patt until Back measures 20 (24, 29, 33, 37, 36) cm finishing on a WS row.

Shape Armholes

Keeping patt correct, cast off 2 sts at beg of next 2 rows. 63 (69, 75, 81, 87, 93) sts.

Dec. 1 st at each end of next and following 4 alt rows. 53 (59, 65, 71, 77, 83) sts.

Continue in patt until armhole measures 13 (14, 15, 16, 17, 18) cm. Finishing on a WS row.

Shape Shoulders

Cast off 5 (5, 6, 7, 7, 8) sts at beg of next 4 rows, then 4 (6, 6, 6, 8, 8) sts at beg of following 2 rows.

Cast off remaining 25 (27, 29, 31, 33, 35) sts.

FRONT

Work as given for Back until 16 (16, 16, 18, 18, 18) rows less have been worked than on Back to start of shoulder shaping, thus finishing on a WS row.

Shape Neck

Next Row: RS - Patt. 20 (23, 25, 28, 30, 33) sts, turn and leave remaining sts on a holder.

Working on this set of sts only for first side, proceed as follows:-

** Dec 1 st at neck edge on next 4 rows, then on following 2 (3, 3, 4, 4, 5) alt rows. 14 (16, 18, 20, 22, 24) sts. Work 7 (5, 5, 5, 5, 3) rows, finishing at armhole edge.

Shape Shoulder

Cast off 5 (5, 6, 7, 7, 8) sts at beg of next and following alt row.

Work 1 row.

Cast off remaining 4 (6, 6, 6, 8, 8) sts.

Return to sts left on holder and rejoin yarn with right side facing. Cast off 13 (13, 15, 15, 17, 17) sts at beg of next row. 20 (23, 25, 28, 30, 33) sts. Complete as given for first side from **, noting the bracketed exception.

SLEEVES (BOTH ALIKE)

Using 3.25mm needles, cast on 33 (35, 37, 39, 41, 43) sts. Work 6 rows in moss st. as given for Back, finishing on a WS row. Change to 4.00mm needles.

Beg patt.

Row 1: RS - K4 (5, 6, 7, 0, 1), * P1, K7, rept. from * to last 5 (6, 7, 8, 1, 2) sts, P1, K4 (5, 6, 7, 0, 1).

Row 2: P3 (4, 5, 0, 0, 0), K1 (1, 1, 0, 0, 1), P1 (1, 1, 0, 1, 1), K1, * P5, K1, P1, K1, rept from * to last 3 (4, 5, 6, 7, 0) sts, P3 (4, 5, 5, 5, 0), KO (0, 0, 1, 1, 0), PO (0, 0, 0, 1, 0).

These 2 rows form patt. Keeping patt correct and taking inc sts into patt, continue in patt as now set, shaping sides by inc 1 st at each end of the needle on the next and every following alt (4th, 4th, 4th, 6th, 6th) row until 39 (55, 49, 49, 75, 75) sts are on the needle.

1st, 2nd, 3rd, 4th and 6th sizes only

Inc 1 st at each end of every following 4 (6, 6, 6, 8)th row until there are 59 (63, 67, 71, 79) sts.

All Sizes

Continue without further shaping until Sleeve measures 20 (26, 30, 34, 38, 42) cm finishing on a WS row.

Shape Top

Cast off 4 (4, 4, 4, 5, 5) sts. at beg. of next 10 (8, 6, 2, 10, 8) rows, then 0 (5, 5, 5, 0, 6) sts. at beg. Of following 0 (2, 4, 8, 0, 2) rows. Cast off remaining 19 (21, 23, 23, 25, 27) sts.

MAKING UP

Join shoulder seams by top sewing.

VERSION WITH COLLAR ONLY COLLAR

Using 3.25mm needles, cast on 25 (27, 29, 31, 33, 35) sts.

Work 1 row in moss st as given for Back.

Keeping moss st correct, cast on 5 (5, 5, 6, 6, 6) sts at beg of next 6 (6, 10, 4, 8, 8) rows, then 4 (4, 0, 5, 5, 5) sts at beg of following 4 (4, 0, 6, 2, 2) rows. 71 (73, 79, 85, 91, 93) sts.

Work 2 rows.

Cast off 4 (4, 0, 5, 5, 5) sts at beg of next 4 (4, 0, 6, 2, 2) rows, then 5 (5, 5, 6, 6, 6) sts at beg of following 6 (6, 10, 4, 8, 8) rows. Cast off remaining 25 (27, 29, 31, 33, 35) sts.

Fold Collar in half with wrong sides facing. Matching original cast on edge (and final cast off edge) to back neck and with ends at centre front, sew shaped edges to neck edge.

VERSION WITH HOOD ONLY RIGHT HOOD

Using 3.25mm needles, cast on 8 (10, 10, 12, 12, 12) sts.

Work 1 row in moss st as given for Back. (For Left Hood, work 1 extra row here).

Keeping moss st correct, cast on 4 sts at beg of next and following 5 alt rows, then 8 (10, 10, 12, 14, 14) sts at beg of following alt row. 40 (44, 44, 48, 50, 50) sts.

Work 6 rows, thus finishing on a WS row. (For Left Hood, work 1 less row here).

Inc 1 st at end of next and every following 6th row until there are 48 (52, 52, 56, 58, 58) sts. (For Left Hood, inc at beg of rows). Continue without shaping until Hood measures 21 (23, 25, 27, 29, ▶

31) cm. from original cast on edge, finishing on a WS row.

Dec 1 st at shaped back edge of next and following 7 alt rows, then on next 11 rows, finishing on a WS row.

Cast off remaining 29 (33, 33, 37, 39, 39) sts.

LEFT HOOD

Work as given for Right Hood, noting the bracketed exceptions. Join back and overhead hood seam by top sewing. Matching hood seam to centre back neck and with front edges of hood at centre front, sew Hood to neck edge, easing in slight fullness.

BOTH VERSIONS

Matching centre of cast off edge of Sleeves to shoulder seams, sew Sleeves to Back and Front by top sewing. Join side and sleeve seams by top sewing.

CARDIGANS

BACK

Work as given for Back of Sweater.

LEFT FRONT

Using 3.25mm needles, cast on 35 (38, 41, 44, 47, 50) sts.

Row 1: RS - * K.1, P1, rept from * to last 1 (0, 1, 0, 1, 0) st., K1 (0, 1, 0, 1, 0).





◀ Red Classic Cardigan continued.

This row sets position of moss st as given for Back.
Work a further 5 rows in moss st, finishing on a WS row. Change to 4.00mm needles.

Beg patt.

Row 1: RS - K5 (0, 3, 6, 1, 4), * P1, K7, rept from * to last 6 sts, P1, K3, P1, K1.

Row 2: P1, K1, P2, K1, P1, K1, * P5, K1, P1, K1, rept from * to last 4 (7, 2, 5, 0, 3) sts., P4 (5, 2, 5, 0, 3), (K.1, P.1) 0 (1, 0, 0, 0, 0) time.

These 2 rows form patt.

*** Continue in patt until Left Front matches Back to start of armhole shaping, finishing on WS row. (For Right Front, work 1 extra row here).

Shape Armhole

Keeping patt correct, cast off 2 sts at beg of next row. 33 (36, 39, 42, 45, 48) sts.

Work 1 row. (For Right Front, omit this row).

Dec 1 st at armhole edge of next and following 4 alt rows. 28 (31, 34, 37, 40, 43) sts.

Continue without shaping until 17 (17, 17, 19, 19, 19) rows less have been worked than on Back to start of shoulder shaping, finishing on a RS row. (For Right Front, work 1 extra row here).

Shape Neck

Keeping patt correct, cast off 8 (8, 9, 9, 10, 10) sts at beg of next row. 20 (23, 25, 28, 30, 33) sts.

Dec 1 st at neck edge on next 4 rows, then on following 2 (3, 3, 4, 4, 5) alt rows. 14 (16, 18, 20, 22, 24) sts.

Work 8 (6, 6, 6, 6, 4) rows, finishing at armhole edge.

Shape Shoulder

Cast off 5 (5, 6, 7, 7, 8) sts at beg of next and following alt row.

Work 1 row.

Cast off remaining 4 (6, 6, 6, 8, 8) sts.

RIGHT FRONT

Using 3.25mm needles, cast on 35 (38, 41, 44, 47, 50) sts.

Row 1: RS - K1 (0, 1, 0, 1, 0), * P1, K1, rept from * to end.

This row sets position of moss st. as given for Back.

Work a further 5 rows in moss st, thus finishing on a WS row.

Change to 4.00mm needles.

Beg patt.

Row 1: RS - K1, P1, K3, P1, * K7, P1, rept from * to last 5 (0, 3, 6, 1, 4) sts, K5 (0, 3, 6, 1, 4).

Row 2: (P.1, K.1) 0 (1, 0, 0, 0, 0) time, P4 (5, 2, 5, 0, 3), * K1, P1, K1, P5, rept from * to last 7 sts, K1, P1, K1, P2, K1, P1.

These 2 rows form patt.

Complete as given for Left Front from ***, noting the bracketed exceptions.

SLEEVES (BOTH ALIKE)

Work as given for Sleeves of Sweater.

MAKING UP

Join shoulder seams by top sewing.

VERSION WITH COLLAR ONLY COLLAR

Work as given for Collar of Sweater. Fold Collar in half with WS facing. Matching original cast on edge (and final cast off edge) to back neck and with ends level with front opening edges, sew shaped edges to neck edge.

VERSION WITH HOOD ONLY RIGHT AND LEFT HOOD

Work as given for Right and Left Hood of Sweater.

Join back and overhead hood seam by top sewing. Matching hood seam to centre back neck and with front edges of hood level with front opening edges, sew Hood to neck edge, easing in slight fullness.

BOTH VERSIONS

Matching centre of cast off edge of Sleeves to shoulder seams, sew Sleeves to Back and Front by top sewing. Join side and sleeve seams by top sewing. Insert zip into centre front opening.

GILETS BACK

Work as given for Back of Sweater.

LEFT AND RIGHT FRONTS

Work as given for Left and Right Fronts of Cardigan.

MAKING UP

Join shoulder seams by top sewing.

ARMHOLE BORDERS (BOTH ALIKE)

With RS facing and using 3.25mm needles, pick up and K61 (65, 71, 75, 79, 83) sts evenly around entire armhole edge. Work 5 rows in moss st as given for Back. Cast off.

Fold Armhole Border in half to inside and stitch in place.

Complete Making Up as given for Cardigans, noting there are no sleeve seams to be sewn. Press seams.

Wentworth Distributors NZ Ltd
Free phone AU: 1800 150 542
Free phone NZ: 0800 738 998
www.naturallyyarnsnz.com

Striped Vest

Striped Vest in 3 colours for children
1 to 6 years, design by Biggan

YARN

- 1, 1, 2, 2, 2, 2 x balls 50gm Biggan DK 8ply Merino First Cross in main colour 795 Navy
- 1, 1, 1, 1, 2, 2 x balls 50gm Biggan DK 8ply Merino First Cross in contrast colour 1 745 Denim
- 1, 1, 1, 1, 1, 1 x balls 50gm Biggan DK 8ply Merino First Cross in contrast colour 2 222 Crimson

NEEDLES

- 4.00mm knitting needles
- 4.00mm circular needle 60cm
- 3.00mm circular needle 40cm

TENSION

22 sts by 29 rows single rib on
4.00mm needles to 10cm

MEASUREMENTS

Size: 1, 2, 3, 4, 5, 6 years
To fit chest: 48, 50, 53, 56, 59, 62cm
Garment length: 30, 33, 36, 39, 42,
45cm

STITCH GUIDE STRIPED VEST

Three colour stripe sequence

Contrast colour 1 – 8 rows
Contrast colour 2 – 8 rows
Main colour – 8 rows

When knitting a vest on circ needles, knit up to armholes, then continue on straight needles.

With Mc and 4.00mm circ needle (60cm) cast on 120 (124, 128, 132, 136, 140) sts. Close the loop to start knitting in the round, which means that beg and end of row is where first and last sts meet. Make sure that all sts are hanging down in the same direction, so edge is not twisted.

Next Rounds: Work 4 (4, 5, 5, 5, 6) cm single rib.

Change to stocking st, and work stripes as per colour sequence above.



(Please Note – Stocking st is only K sts on circ needle).

When work measures 19 (22, 24, 27, 29, 32) cm, diving for armhole into one FRONT and one BACK piece, which will be knitted separately.

BACK

Work first 60 (62, 64, 66, 68, 70) sts from circ needle onto 4.00mm knitting needles. Work stocking st (Please Note - St.st on straight needles is worked 1K row, 1P row alt) continue with stripes.

In beg of first 6 rows dec for armhole 6sts = 2 rows, 2sts = 2 rows, 1sts =

2 rows ((6, 2, 1) (7, 2, 1) (7, 2, 1) (8, 2, 1) (8, 2, 1)) sts. 42 (44, 44, 46, 46, 48) sts left on needle.

When armhole measures 11 (11, 12, 12, 13, 13) cm cast off for neck as foll, starting from beg of row: Knit 10 (10, 10, 11, 11, 11) Cast off 22 (24, 24, 24, 24, 26) sts, Knit 10 (10, 10, 11, 11, 11)

Work either side separately.

LEFT SIDE

Dec1, 1 st in from edge at neckline, every other row twice. When armhole measures 13 (13, 14, 14, 15, 15) cm cast off loosely.

RIGHT SIDE

Work as left side reverse shaping.

FRONT – V-NECK

RIGHT FRONT

Work 30 (31, 32, 33, 34, 35) sts onto 4.00mm knitting needles. Dec for armhole, as BACK. At the same time dec1 for V-NECK, 1 st in from neckline, every alt row 9 (9, 10, 10, 11, 11) times then every 4th row 4 times. When armhole measures as BACK, cast off loosely.

LEFT FRONT

Work as Right Front reverse shaping.

V-NECKLINE

With Mc and size 3.00mm circ needle (40cm), starting from RS and front Left shoulder, pick up around neck as foll: 44 (44, 46, 46,

48, 48) sts along Left side, 44 (44, 46, 46, 48, 48) sts along Right side, 30 (30, 32, 32, 34, 34) sts along Back.

Work single rib. On first row inc1 in 44th (44th, 46th, 46th, 48th, 48th) st, so it will form the middle st in the V of neckline.

This middle st should always be worked in K. Dec1 on either side of middle st every row.

After 7 rows cast off loosely enough for neckline to stretch, but not to be loose or floppy.

MAKING UP

Fasten off all loose ends.

Steam lightly - Do not press - with an iron around armhole and neckline.

Using yarn sew together shoulder seams from the RS, in back loops of cast off sts, with an overcast st (similar

to hemming st). This makes a smooth and decorative seam.

ARMHOLES

With Mc and size 3.00mm circ needle (40cm), on RS starting at the bottom of armhole, pick up as foll: 9 (9, 10, 10, 11, 11) cast off sts, 26 (26, 28, 28, 30, 30) sts along one side of armhole up to shoulder seam, 26 (26, 28, 28, 30, 30) sts along other side of armhole from shoulder seam down, 9 (9, 10, 10, 11, 11) cast off sts 70 (70, 76, 76, 82, 82 sts in all.) Work firm single rib for 5 rows. Cast off in rib.

Biggan Design Pty Ltd

PO Box 798

Kenmore QLD

Ph: 07 3378 4453

www.biggandesign.com.au

Garter Ridge Cushions

Easy cushions worked in alternating stripes of Garter and Stocking Stitch. Designed by Jo Sharp

YARN

Version 1

- 10 balls 50gm Jo Sharp Desert Garden Aran Cotton colour 665 Pear

Version 2

- 5 balls 50gm Jo Sharp Desert Garden Aran Cotton colour A in 667 Dew
- 4 x 50gm Jo Sharp Desert Garden Aran Cotton colour B in 246 Sapphire
- 1 x 50gm Jo Sharp Desert Garden Aran Cotton colour C in 666 Arizona
- 3 x 50gm Jo Sharp Desert Garden Aran Cotton colour D in 665 Pear

Version 3

- 5 balls 50gm Jo Sharp Desert Garden Aran Cotton colour A in 666 Arizona

- 4 x 50gm Jo Sharp Desert Garden Aran Cotton colour B in 246 Sapphire
- 1 x 50gm Jo Sharp Desert Garden Aran Cotton colour C in 665 Pear
- 3 x 50gm Jo Sharp Desert Garden Aran Cotton colour D in 667 Dew

NEEDLES AND TOOLS

- 5.00mm knitting needles
- 56 x 56cm cushion inserts -1 for each cushion

TENSION

18 sts by 24 rows over St st on 5.00mm needles to 10cm

MEASUREMENTS

Width - 50cm
Length - 50cm

STITCH GUIDE

Cushion Version 1 - Make 1 Using 5.00mm needles and Col A, cast on 90 sts.

Next Rows: RS - Work 5 rows St st (beg with a K row).

Next Rows: WS - Work 5 rows Garter st (knit all rows).

Next Rows: RS - Work 10 rows St st (beg with a K row).

Next Row: RS - Purl.

Next Rows: WS - Work 3 rows St st (beg with a P row).

Next Rows: RS - Work 5 rows Garter st (knit all rows).

Next Rows: WS - Work 3 rows St st (beg with a P row).

Next Row: RS - Purl.

Next Rows: WS - Work 5 rows St st (beg with a P row)

38 rows.

These 38 rows form pattern rep.
Rep these 38 rows, 3 times.

Next Rows: RS - Work 5 rows St st
(beg with K row).

Next Rows: WS - Work 5 rows Garter
st (knit all rows).

Next Row: RS - Work 5 rows St st
(beg with K row) 129 rows. Cast off.

CUSHION VERSIONS 2 AND 3 (STRIPED) - MAKE 2.

Using 5.00mm needles and Col A,
cast on 90 sts.

Next Rows: RS - Work 5 rows St st
(beg with a K row).

Next Rows: WS - Work 5 rows Garter
st (knit all rows).

Next Rows: RS - Work 5 rows St st
(beg with a K row).

Change to Col B.

Next Rows: WS - Work 5 rows St st
(beg with a P row).

Change to Col C.

Next Row: RS - Purl.

Change to Col D.

Next Rows: WS - Work 3 rows St st
(beg with a P row).

Next Rows: RS - Work 5 rows Garter
st (knit all rows).

Next Rows: WS - Work 3 rows St st
(beg with a P row).

Change to Col C.

Next Row: RS - Purl.

Change to Col B.

Next Rows: WS - Work 5 rows St st
(beg with a P row) 38 rows.

These 38 rows form pattern rep.

Rep these 38 rows, 3 times.

Change to Col A.

Next Rows: RS - Work 5 rows St st
(beg with K row).

Next Rows: WS - Work 5 rows Garter
st (knit all rows).

Next Rows: RS - Work 5 rows St st
(beg with K row) 129 rows.

Cast off.

MAKING UP

Press pieces gently on WS using a
warm iron over a damp cloth.

VERSION 1

Cut a piece of fabric 56 x 56cm.
Overlock or zigzag stitch around all
four edges to stop fraying. Fold one
edge over by 1cm (to WS) and press
to form crease along seamline.



With RS tog, pin around edges of 3
sides (not the folded edge).

Using a matching cotton thread and
hand sewing needle, hand stitch
around 3 sides (leaving 1cm seam
allowance). Alternatively use a
sewing machine (make sure fabric is
underneath knitted piece) on a narrow
zig zag setting and stitch length of
approx 3mm. Turn cushion RS out,
stuff with cushion insert, then stitch

rem seam by hand using the crease in
the woven fabric as a guide.

VERSIONS 2 AND 3

With RS tog, join 3 sides using
backstitch. Turn cushion to RS out, fill
with cushion insert then join final side
using slip st.

Jo Sharp

www.josharppatterns.com

Patterns



Scarf or Shalwarlette



Mesh Tops -



Patterns



Ribbed Scarf



Motif Top -



Patterns



Crochet Hat and Rucksack -



A LITTLE LOVE

SWEET DESIGNS TO KNIT AND CROCHET
IN DREAMTIME MERINO 4 & 8 PLY
AND BIG BABY 4 & 8 PLY

easy
knits!

These patterns and more are available in Peaceful book 1104



Patons Dreamtime Merino 8 ply



Patons Dreamtime Merino 4 ply



Patons Big Baby 4 & 8 ply



1104

A Patons

from
baby to
size 4!

PEACEFUL

15 DESIGNS TO KNIT AND CROCHET IN
DREAMTIME MERINO 4 AND 8 PLY
AND BIG BABY 4 AND 8 PLY

Phone 1800 337 032 for your nearest stockist or visit
patonsyarns.com.au /auspinners /auspinners



Projects

Short Sleeved Cardigan

This sweet cardigan is the perfect addition to any little girl's wardrobe.

Design by Wendy

YARN

Plain Version

- 2, 3, 3, 3, 4 balls 100gm Wendy Supreme Luxury Cotton DK
- OR
- 4, 5, 5, 6, 7 balls 50gm Wendy Pearl DK
- 4 buttons

2 Colour Version

- 2, 2, 2, 3, 3 balls 100gm Wendy Supreme Luxury Cotton DK in main colour
- 1, 1, 1, 1, 1 ball 100gm Wendy Supreme Luxury Cotton DK in contrast colour
- OR
- 4, 4, 4, 6, 6 balls 50gm Wendy Pearl DK in main colour
- 1, 1, 1, 1, 1 ball 50gm Wendy Pearl DK in contrast colour
- 4 buttons

NEEDLES AND TOOLS

- 3.25mm knitting needles
- 4.00mm knitting needles
- Stitch holder

MEASUREMENTS

To fit chest: 56, 61, 66, 71, 76cm
Garment length: 31, 34, 37, 39, 41cm

TENSION

22 stitches by 31 rows over pattern on 4.00mm needles to 10cm

WORKING PATTERN

PLAIN VERSION

BACK

Using 3.25mm needles cast on 68 (74, 80, 86, 92) sts and Knit 19 rows.

Change to 4.00mm needles and pattern.

Row 1: RS - K.2, *P1, K2, rept. from * to end.

Row 2: P2, * K1, P2, rept. from * to end.

Row 3: K2, * P1, K2, rept. from * to end.

Row 4: Knit.

These 4 rows form the pattern.

Continue in pattern until work measures 20.5 (23, 25.5, 26.5, 28) cm, from the beg, ending with a WS row.

Shape for Sleeves

Keeping continuity of pattern, cast on 12 sts at the beg of the next 2 rows. 92 (98, 104, 110, 116) sts. Continue without further shaping until work measures 10 (11.5, 12, 12.5, 12.5) cm, from commencement of sleeve shaping, ending with a WS row.

Shape Shoulders and top of Sleeves

Cast off 35 (37, 39, 41, 44) sts at the beg of the next 2 rows.

Leave the remaining 22 (24, 26, 28, 28) sts on a spare needle.

LEFT FRONT

* Using 3.25mm needles, cast on 35 (38, 41, 44, 47) sts and Knit 19 rows.

Change to 4.00mm needles and pattern.

Row 1: RS - K2, *P1, K2, rept. from * to end.

Row 2: P2, * K1, P2, rept. from * to end.

Row 3: K2, * P1, K2, rept. from * to end.

Row 4: Knit.

These 4 rows form the pattern.

Continue in pattern until work measures 20.5 (23, 25.5, 26.5, 28) cm from the beg, ending with a WS row *.

Shape for Sleeve

Cast on 12 sts at the beg of the next row 47 (50, 53, 56, 59) sts. Continue without further shaping until work measures 5 (5, 5.5, 6, 6) cm., from commencement of sleeve shaping, ending at front edge.

Shape Neck

Next Row: Cast off 7 (8, 8, 9, 9) sts, pattern to end.

Dec. 1 st at neck edge on the next and every alternate row until 35 (37, 39, 41, 44) sts remain. Continue without further shaping until work measures 10 (11.5, 12, 12.5, 12.5) cm from commencement of sleeve shaping, ending at side edge.

Shape Shoulder and top of Sleeve

Cast off these 35 (37, 39, 41, 44) sts.

RIGHT FRONT

Follow instructions for Left Front from * to *.

Work 1 row.

Shape for Sleeve

Cast on 12 sts at the beg of the next row. 47 (50, 53, 56, 59) sts.

Continue without further shaping until work measures 5 (5, 5.5, 6, 6)





cm from commencement of sleeve shaping, ending at front edge.

Shape Neck

Next Row: Cast off 7 (8, 8, 9, 9) sts pattern to end.

Dec. 1 st. at neck edge on every alternate row until 35 (37, 39, 41, 44) sts remain.

Continue without further shaping until work measures 10 (11.5, 12, 12.5, 12.5) cm, from the commencement of sleeve shaping, ending at side edge.

Shape Shoulder and top of Sleeve

Cast off these 35 (37, 39, 41, 44) sts.

BUTTON BAND

Using 3.25mm needles, cast on 7 sts and work in garter st. (every row K.) for 12 (14.5, 16.5, 17, 18.5) cm.

Mark position for 1 st button. Continue in garter st.

Mark position for 3 more buttons, evenly spaced (the last in centre of neck band).

Work until band when slightly stretched reaches beg of neck shaping. Leave sts on a holder.

BUTTONHOLE BAND

Using 3.25mm needles, cast on 7 sts and work in garter st. (every row K.) for 12 (14.5, 16.5, 17, 18.5) cm.

Buttonhole Row: K3, yfwd, K2tog, K2. Continue in garter st making 2 more buttonholes to correspond with positions marked on button band. Continue in garter st until band when slightly stretched reaches beg of neck shaping. Leave sts on a holder.

NECKBAND

Using top sewing, join shoulder and top of sleeve seams. With right side of work facing and using 3.25mm needles, K7 sts from buttonhole band holder pick up

and K17 (18, 19, 20, 20) sts up right side of neck, K across the 22 (24, 26, 28, 28) sts at centre, pick up and K17 (18, 19, 20, 20) sts down left side of neck K7 sts. from button band holder. 70 (74, 78, 82, 82) sts.

K8 rows making buttonhole on the 4th row as before.

Cast off, or cast off using picot option as follows:- cast off 2 sts. * sl remaining st on right hand needle to left hand needle cast on 2 sts then cast off 5 sts rept from * to end.

SLEEVE EDGINGS

With RS of work facing and using 3.25mm needles, pick up and K44 (48, 52, 54, 54) sts evenly along edge.

K8 rows. Cast off.

TWO-COLOURED VERSION

BACK

Using 3.25mm needles and Main colour cast on 68 (74, 80, 86, 92) sts and Knit 19 rows.

Change to 4.00mm needles and pattern.

Complete as for Back of Plain Version.

LEFT FRONT AND RIGHT FRONT

Using 3.25mm needles and Main colour cast on 35 (38, 41, 44, 47) sts and Knit. 19 rows.

Change to 4.00mm needles and pattern.

Complete as for Left and Right Fronts of Plain Version.

NECKBAND, SLEEVE EDGINGS, BUTTONHOLE AND BUTTON BANDS

Using Contrast colour, work as for Plain Version.

MAKING UP

Using top sewing join side and underarm seams. Sew on Front Bands and buttons. Press as instructions given on ball band.

Wentworth Distributors NZ Ltd
Free phone AU: 1800 150 542
Free phone NZ: 0800 738 998
www.naturallyyarnsnz.com

Textured Vest

Designed by Patons

YARN

- 1, 1, 1, 1, 2, 2 balls 100gm Patons Big Baby 8ply in Silver 2565
- 3 buttons

NEEDLES AND TOOLS

- 4.00mm knitting needles
- One 4.00mm double-pointed knitting needle
- Wool sewing needle

MEASUREMENTS

Size: 3, 6, 9, 12 months, 2, 4 years
To fit chest: 40, 45, 50, 52, 55, 60cm
Finished fit: 42, 47, 53, 56, 58, 62cm
Garment length: 22, 25, 28, 32, 34, 38cm

TENSION

23 sts by 36 rows over patt, on 4.00mm needles to 10cm

WORKING PATTERN

VEST (WORKED IN ONE PIECE TO ARMHOLES)

Using 4.00mm needles, cast on 50 (62, 74, 66, 70, 78) sts.

BEGIN LOWER SHAPING

Row 1: K2, * P2, K2, rep from * to end.

Row 2: Inc in first st, P1, * K2, P2, rep from * to last 4 sts, K2, P1, inc in last st. 52 (64, 76, 68, 72, 80) sts.

Row 3: Cast on 6 sts, knit to last st, inc in last st.

Row 4: As 3rd row. 66 (78, 90, 82, 86, 94) sts.

Row 5: Cast on 2 (2, 2, 6, 6, 6) sts, * K2, P2, rep from * to last 4 sts, K2, P1, inc in last st.

Row 6: Cast on 2 (2, 2, 6, 6, 6) sts, K1, * P2, K2, rep from * to last 2 sts, P1, inc in last st. 72 (84, 96, 96, 100, 108) sts.

Row 7: Cast on 2 (2, 2, 6, 6, 6) sts, knit to last st, inc in last st. ▶





◀ **Textured Vest continued.**

Row 8: As 7th row. 78 (90, 102, 110, 114, 122) sts.
Last 8 rows form and place patt.
Keeping patt correct, working extra sts into patt and noting that 8 rows form patt rep, inc one st at each end of next 7 (5, 5, 3, 3, 3) rows, then in every foll alt row twice, then in every foll 4th row until there are 98 (110, 122, 130, 134, 142) sts.
Cont in patt without further shaping until Vest measures 10 (12, 14, 16, 18, 21) cm from beg, working last row on WS.

Next Row: (buttonhole row) Patt 2, yon, patt 2tog, patt to end.
Work 7 (7, 9, 11, 11, 13) rows patt.

DIVIDE FOR BACK AND FRONTS

Next Row: Patt 23 (27, 31, 32, 33, 35), cast off next 2 sts, patt 48 (52,

56, 62, 64, 68) incl st rem on right-hand needle after casting off, cast off next 2 sts, patt to end.
Cont on last 23 (27, 31, 32, 33, 35) sts for Left Front.

Next Row: Patt to last 3 sts, K3.

Next Row: K2, sl 1, K1, pssso, patt to end.

Rep last 2 rows twice. 20 (24, 28, 29, 30, 32) sts.

Keeping 3 sts of garter st edging at armhole correct, work 9 (9, 11, 13, 13, 15) rows.

SHAPE NECK

Next Row: K3, patt to last 4 sts, K2tog, K2.

Next Row: K2, K2tog tbl, patt to last 3 sts, K3. 18 (22, 26, 27, 28, 30) sts.
Keeping garter st edging at each end of work correct, dec one st (inside 2 sts as before) at neck edge in next 3 (3, 7, 5, 5, 7) rows, then in every foll alt row until 10 (12, 13, 15, 15, 16) sts rem.

Work 1 row.

Leave rem 10 (12, 13, 15, 15, 16) sts on double-pointed needle.

With WS facing, join yarn to next group of 48 (52, 56, 62, 64, 68) sts for Back.

Next Row: K3, patt to last 3 sts, K3.

Next Row: K2, sl 1, K1, pssso, patt to last 4 sts, K2tog, K2.

Rep last 2 rows twice. 42 (46, 50, 56, 58, 62) sts.

Keeping 3 sts of garter st edging at armholes correct, work 19 (23, 27, 29, 31, 33) rows.

SHAPE BACK NECK

Next Row: Patt 14 (16, 17, 19, 19, 20), cast off next 14 (14, 16, 18, 20, 22) sts in patt, patt to end.

Cont on last 14 (16, 17, 19, 19, 20) sts for left side of back neck.

** Dec one st at neck edge in next 4 rows. 10 (12, 13, 15, 15, 16) sts.

Work 1 row. **

Leave sts on needle.

JOIN SHOULDERS

Work a 3-needle cast off as folls –
Fold work so that RS of left front shoulder and left back shoulder are together.

Cast off sts, knitting one st from each needle together across row.

With WS facing, join yarn to rem 14 (16, 17, 19, 19, 20) sts of Back for right side of back neck.

Work as for left side of back neck from ** to **.

Leave rem 10 (12, 13, 15, 15, 16) sts on double-pointed needle.

With WS facing, join yarn to rem 23 (27, 31, 32, 33, 35) sts for Right Front.

Next Row: K3, patt to end.

Next Row: (buttonhole row) Patt 2, yon, patt 2tog, patt to last 4 sts, K2tog, K2.

Next Row: K3, patt to end.

Next Row: Patt to last 4 sts, K2tog, K2.

Rep last 2 rows once. 20 (24, 28, 29, 30, 32) sts.

Keeping 3 sts of garter st edging at armhole correct, work 5 (5, 7, 9, 9, 11) rows.

Next Row: (buttonhole row) Patt 2, yon, patt 2tog, patt to last 3 sts, K3.
Work 3 rows.

SHAPE NECK

Next Row: K2, K2tog, patt to last 3 sts, K3.

Next Row: K3, patt to last 4 sts, K2tog, K2. 18 (22, 26, 27, 28, 30) sts.

Keeping 3 sts of garter st edging correct at each end of work, dec one st (inside 2 sts as before) at neck edge in next 3 (3, 7, 5, 5, 7) rows, then in every foll alt row until 10 (12, 13, 15, 15, 16) sts rem.

Work 1 row.

Leave sts on needle.

JOIN SHOULDERS

Fold work so that RS of right front shoulder and right back shoulder are together.

Work a 3-needle cast off as before.

MAKING UP

Do not press. Work Blanket st evenly around all edges. Sew on buttons.

Patons

Ph: 1800 337 032

www.patonsyarns.com.au

MAKE MORE FOR LESS

It all starts with a simple concept: we work with the best in the industry to bring the best directly to you - at the lowest prices, *guaranteed*.

Explore the full potential of your creativity without being held back by the high costs of name brand yarns. From classic wool to durable acrylic and versatile cotton yarns, you'll find the highest quality yarns for the very best prices - so you can do what you do best: create.

WOOL of the ANDES

starts at \$2.59AUD/50g ball
100% Peruvian Wool

DISHIE

\$3.89AUD/100g ball
100% Cotton

BRAVA

\$2.59AUD/100g ball
100% Premium Acrylic



Knit Picks®

CONNECT WITH US



KnitPicks.com 080-8234-6084

*Limited time offer. All pricing includes VAT, duties and fees.

**FREE
SHIPPING**
on orders over
\$100AUD*

Patterns



Rating

Ear Warmer and Scarf



Cropped Top -



Patterns



Rating

Crochet Motif Cardigan



JOSHARRP

pattern: www.josharppatterns.com yarn: Jo Sharp Silkroad Ultra, 714 Neptune

yarn & pattern for the Bellissimo Scarf may be purchased at the stores listed below

ACT **Manuka** The Wool Shed@Manuka, 02 6295 0061 www.woolshed.com.au, NSW **Balgowlah** Cast Off Collective 0412 470 583 www.castoffcollective.com.au **Bungendore** I Wool Knit www.iwoolknit.com.au 0406 886 347 **Beecroft** Yarn & Gifts 02 8407 9512, **Penrith** The Wool Inn 02 4732 2201 www.the-wool-inn.com, **Guyra** Black Sheep Wool 'n' Wares 02 6779 1196 www.blacksheepwool.com.au, **Hornsby** Hornsby Wool & Craft 02 9482 4924, **Mittagong** Victoria House Needle Craft 02 4871 1682 www.victoriahuseneedlecraft.com.au **Punchbowl** Wool and Yarn (online only) 0425 227 885 www.wooland yarn.com.au **Rylstone** Convent & Chapel 0409 564 747 www.conventandchapelwool.com **Wollombi** The Woolombi Wool Store 02 4998 3153 www.woolombiwoolstore.com.au, **Merimbula** Pins & Needles 02 6495 3646 pinsneedles.allthingsquilting.com.au, **Newcastle** Hand to Hand Crafts 02 4929 7255, **Rylstone** Convent & Chapel 0409 564 747 www.conventandchapel.com **QLD** **Taringa** Yarn Glorious Yarn 07 3720 8258 www.yarngloriousyarn.com.au **SA** **Glenelg** Barb's Sew & Knits 08 8294 7441 www.barbssewandknits.com.au, **Highgate** Needle Nook 08 8271 4670 www.needlenook.com.au **St Agnes** House Of Yarn 08 8263 9544 www.houseofyarn.com, **Brooklyn Park** Purl and Friends 0433 02 2016 **TAS** **Hobart** The Stash Cupboard 03 6234 1219 www.facebook.com/TheStashCupboard, **VIC** **Canterbury** Sunspun 03 9830 1609 www.sunspun.com.au, **Lonsdale** Wild Purl 03 5258 5349, **Northcote** Woolarium 03 9486 5275 www.woolarium.com, **Margaret River** Spool & Spindle 0438 945 675 **Albany** Knit Online Store (online only) www.knit.net.au

Crochet Tank

Design by Patons



YARN

- 7, 8, 9, 10, 11 balls 50gm Patons Cotton Blend 8ply in Cloud 34

NEEDLES AND TOOLS

- 5.00mm crochet hook
- wool sewing needle

MEASUREMENTS

Size: XS, S, M, L, XL

To fit bust: 70, 80, 90, 100, 110cm

Finished fit: 78, 88, 98, 110, 120cm

Garment length: 62, 63, 64, 65, 66cm

SPECIAL ABBREVIATIONS

Dec = * yoh twice, draw up lp in next st, (yoh and draw through 2 lps) twice, rep from * in next st, yoh and draw through all 3 lps on hook.

Ddec = * yoh twice, draw up lp in next st, (yoh and draw through 2 lps) twice, rep from * in each of next 2 sts, yoh and draw through all 4 lps on hook.

TENSION

13.5 dtr and 5.5 rows over dtr fabric, on 5.00mm hook to 10cm

GETTING STARTED

Note: Australian/UK terminology used throughout.

WORKING PATTERN

BACK

Using 5.00mm hook, make 59 (65, 73, 81, 87) ch loosely.

Row 1: Miss 4ch (counts as 1dtr), 1dtr in each ch to end. 56 (62, 70, 78, 84) dtr.

Row 2: (1dc, 2ch) in first dtr (counts as 1dtr throughout), 1dtr in each dtr to end.

Rep last row 9 times.

Begin Side Shaping

Row 1: (1dc, 2ch) in first dtr, Dec, 1dtr in each dtr to last 3 sts, Dec, 1dtr in last st. 54 (60, 68, 76, 82) sts.

Row 2: (1dc, 2ch) in first dtr, 1dtr in each st to end.

Rep last 2 rows 4 times. 46 (52, 60, 68, 74) dtr.

Begin shaping for armholes

Row 1: Sl st in each of first 2 sts, (1dc, 2ch) in next st, Dec, 1dtr in each dtr to last 5 sts, Dec, 1dtr in next st, turn, leaving last 2 sts unworked.

Rep last row 0 (2, 2, 2, 4) times. 40 (34, 42, 50, 44) sts.

Sizes XS, M and L only

Next Row: Sl st in first st, (1dc, 2ch) in next st, Dec, 1dtr in each dtr to last 4 sts, Dec, 1dtr in next st, turn, leaving last st unworked. Rep last row 1 (0, 1) times.

All sizes

32 (34, 38, 42, 44) sts. **

Work 6 (7, 7, 7, 8) rows without further shaping.

Shape Back Neck

Next Row: (1dc, 2ch) in first st, 1dtr in each of next 1 (1, 2, 5, 5) dtr, Ddec, 1dtr in next dtr. 4 (4, 5,

8, 8) sts. Fasten off, leaving rem sts unworked.

Miss next 20 (22, 24, 22, 24) dtr at centre back and join yarn with a sl st in next dtr for other side of neck.

Next Row: (1dc, 2ch) in same st as sl st, Ddec, 1dtr in each st to end. 4 (4, 5, 8, 8) sts. Fasten off.

FRONT

Work as for Back to **.

Work 2 (2, 2, 1, 2) rows without further shaping.

Shape neck

Row 1: (1dc, 2ch) in first st, 1dtr in each of next 6 (7, 8, 10, 10) dtr, Ddec, 1dtr in next st, turn.

Cont on these 9 (10, 11, 13, 13) sts for first side of neck.

Row 2: (1dc, 2ch) in first dtr, Ddec, 1dtr in each st to end. 7 (8, 9, 11, 11) sts.

Row 3: (1dc, 2ch) in first dtr, 1dtr in each st to last 4 sts, Ddec, 1dtr in last st. 5 (6, 7, 9, 9) sts.

Row 4: (1dc, 2ch) in first dtr, Dec, 1dtr in each st to end. 4 (5, 6, 8, 8) sts.

Sizes S and M only

Next Row: (1dc, 2ch) in first dtr, 1dtr in each of next (1, 2) sts, Dec, 1dtr in last st.

All sizes

4 (4, 5, 8, 8) sts.

Work 1 (1, 1, 3, 3) rows. Fasten off. Miss next 10 (10, 12, 12, 14) dtr at centre front and join yarn with a sl st in next dtr for other side of neck.

Row 1: (1dc, 2ch) in same st as sl st, Ddec, 1dtr in each st to end. 9 (10, 11, 13, 13) sts.

Row 2: (1dc, 2ch) in first dtr, 1dtr in each st to last 4 sts, Ddec, 1dtr in last st. 7 (8, 9, 11, 11) sts.

Row 3: (1dc, 2ch) in first dtr, Ddec, 1dtr in each st to end. 5 (6, 7, 9, 9) sts.

Row 4: (1dc, 2ch) in first dtr, 1dtr in each st to last 3 sts, Dec, 1dtr in last st. 4 (5, 6, 8, 8) sts.

Sizes S and M only

Next Row: (1dc, 2ch) in first dtr, Dec, 1dtr in each st to end.

All sizes

4 (4, 5, 8, 8) sts.

Work 1 (1, 1, 3, 3) rows. Fasten off.

BACK EDGING

Using 5.00mm hook and beg at left shoulder of Back, work 1 row dc evenly along armhole and left side edge to lower edge, work 3dc in corner, work dc evenly across lower edge, work 3dc in corner, work dc evenly along right side and armhole edge to shoulder.

Work a further 5 rows dc, working 3dc in corners (as before) and inc or dec as necessary to keep work flat. Fasten off.

FRONT EDGING

Work as for Back Edging, beg at right shoulder of Front.

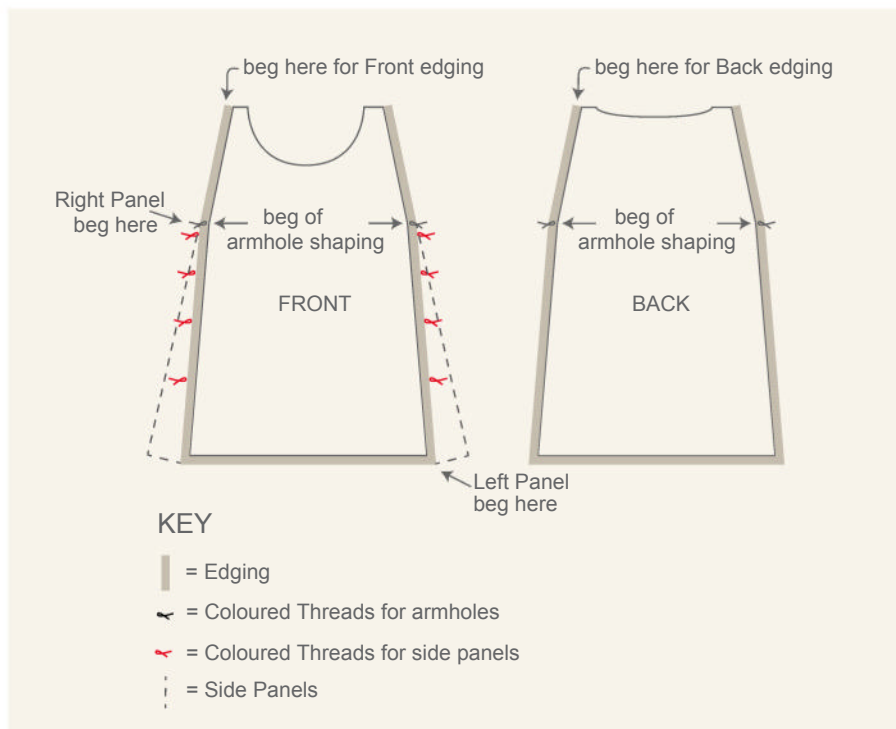
SIDE PANELS

Tie coloured threads on final row of edging at beg of armhole shaping on Front and Back.

Using diagram as a guide, tie coloured threads on sides of Front 2cm, 8cm, 16cm and 26cm below beg of armhole to assist with finishing.

LEFT PANEL

With RS of Front facing and using 5.00mm hook, join with a sl st at lower edge in corner dc. ▶





Row 1: 1ch, 1dc in same st as sl st, 2ch, 1dtr in each dc to first coloured thread, 1tr in each dc to next coloured thread, 1htr in each dc to next coloured thread, 1dc in each dc to last coloured thread, sl st in next dc, turn.

Row 2: 1ch, miss sl st, sl st in each of next 3dc, 1dc in each rem dc, 1htr in each htr, 1tr in each tr, 1dtr in each dtr to end, 1dtr in turning ch.

Row 3: (1dc, 2ch) in first dtr, 1dtr in each dtr, 1tr in each tr, 1htr in each htr, 1dc in each dc, sl st in next st.

Row 4: As 2nd row. Fasten off.

RIGHT PANEL

With RS of Front facing and using 5.00mm hook, join with a sl st at coloured thread 2cm below armhole thread.

Row 1: 1dc in each dc to next coloured thread, 1htr in each dc to next coloured thread, 1tr in each dc to last coloured thread, 1dtr in each dc to corner dc at lower edge, turn.

Row 2: (1dc, 2ch) in first dtr, 1dtr in

each dtr, 1tr in each tr, 1htr in each htr, 1dc in each dc to last 3dc, sl st in next st, turn.

Row 3: 1ch, miss sl st, sl st in each of next 3dc, 1dc in each rem dc, 1htr in each htr, 1tr in each tr, 1dtr in each dtr to end, 1dtr in turning ch.

Row 4: As 2nd row. Fasten off.

NECKBAND

Using a running st seam, join shoulders. With RS facing, using 5.00mm hook and beg at left shoulder seam, work 3 rounds dc evenly around neck edge, dec where necessary to keep work flat. Fasten off.

MAKING UP

Do not press. Using a flat seam, join side edges of Front side panels to side edges of Back (matching armhole threads), easing to fit.

Patons

Ph: 1800 337 032

www.patonsyarns.com.au

◀ Crochet Tank continued.

NEEDLE NOOK

South Australia's widest range in knitting yarns, patterns and accessories.

Beautiful yarns include wool, cotton, mohair, alpaca, bamboo and more

WE'VE MOVED!
4/453 Fullarton Rd
Highgate SA 5063
Ph: 08 8271 4670

Proud stockists of major brands.

Mail order & phone sales welcome.

www.needlenook.com.au

SUPER SOFT ALPACA YARNS

"The Largest Range in Australia"

Available in all natural and extensive fashion colours in 2, 4, 8, 10 and 14 plys .



THE ARDENT ALPACA
The Concept Store

35 Camp Street Beechworth Vic 3747

Ph: 1300 660 993 Fax: 03 5728 2207

Email: info@ardentalpaca.com.au

visit our website:

www.ardentalpaca.com.au Open 7 Days 9.15 - 5pm

Lacy Sleeveless Sweater

Gorgeous summer sweater in luxury cotton

YARN

Long version

- 3, 4, 5, 5, 6, 6, 7, 7 balls 100gm, shade #1512

Short version

- 3, 3, 4, 4, 5, 5, 5, 6 balls 100gm Wendy Supreme Luxury Cotton DK, shade #1506

NEEDLES AND TOOLS

- 3.00mm knitting needles
- 3.75mm knitting needles
- Cable needle

MEASUREMENTS

To fit bust: 76, 81, 86, 91, 97, 102, 107, 112cm

Finished fit: 83.5, 86, 94, 98, 102, 109.5, 112.5, 116cm

Garment length: 48, 49.5, 51, 52, 53.5, 53.5, 56, 56cm

Short Version: 38, 39.5, 40.5, 42, 43, 43, 45.5, 45.5cm

SPECIAL ABBREVIATIONS

Make picot - K into first st, * do not sl loop off left hand needle, sl new st back onto left hand needle, * K into this st, rept from * to * K the 2 new sts, pass first st over 2nd st, K next st, then pass 2nd st over this st.

C5F - cable 5 front, sl next 2 sts onto a cable needle, leave at front of work, K3, then K2 sts from cable needle.

DL - drop loop of previous row.

M1 - make 1, knit into front and back of yfwd of previous row.

TENSION

22 sts by 33 rows over patt on 3.75mm needles to 10cm

WORKING PATTERN

BACK AND FRONT (BOTH ALIKE)

Using 3.75mm needles, cast on 90 (94, 102, 106, 110, 118, 122, 126) sts.

Work 4 rows in garter st. ▶





◀ **Lacy Sleeveless Sweater continued.**

COMMENCE PATTERN

Row 1: RS - K2, * yfwd, sl 1, K1, pssso, K2, rept from * to end.

Row 2: K3, * yfwd, sl 1, K1, pssso, K2, rept from * to last 3 sts, yfwd, sl 1, K1, pssso, K1.

These 2 rows form the patt.

Continue in patt until work measures 40.5 (42, 43, 44.5, 45.5, 45.5, 48.5, 48.5) cm, from commencement finishing on a 2nd row. For shorter version work 10cm less.

Cast off loosely.

LACE EDGING (MAKE 2)

Using 3.75mm needles, cast on 18 (22, 18, 22, 18, 22, 18, 22) sts. Knit 1 row.

76 (86, 97, 107) cm, Sizes Only

Next Row: K5, K2tog, K2, yfwd, K1, K2tog, yfwd, K2tog, K1, yfwd, K3.

(81, 91, 102, 112) cm, Sizes Only

Next Row: K5, yfwd, K2tog, K1, K2tog, yfwd, K2tog, K1, yfwd, K3, K2tog, yfwd, K2tog, K2. 21 sts.

Next Row: K3, yfwd, DL, K7, yfwd, K2tog, K2, (yfwd, K2tog, K1) twice. 21 sts.

Next Row: K5, yfwd, (K2tog) twice, yfwd, K2tog, K1, yfwd, K5, M1, K3. 22 sts.

Next Row: K2, K2tog, yfwd, K2tog, K7, (K2tog, K1) twice, yfwd, K2tog, K1. 19 sts.

Next Row: K5, K2tog, K2, yfwd, K1, K2tog, yfwd, K2tog, K1, yfwd, DL, K3. 18 sts.

All Sizes

Row 1: K3, yfwd, sl the yfwd of previous row, K2, M1, K3, C5F, yfwd, K2tog, K1. 20 sts.

Row 2: Make picot, K6, K2tog, yfwd, K2tog, K4, (K1, P1) into both yfwd loops together as if they were a single loop, K3. 19 sts.

Row 3: K2, K2tog, yfwd, K2tog, K10, yfwd, K2tog, K1. 18 sts.

Row 4: K5, (yfwd, K1) twice, K2tog, yfwd, K2tog, K3, yfwd, DL, K3. 19 sts.

Row 5: K3, M1, K7, M1, K1, M1, K2, yfwd, K2tog, K1. 22 sts.

Row 6: Make picot, K4, yfwd, K2, yfwd, K2tog, K1, yfwd, (K1, K2tog, yfwd, K2tog) twice, K2. 22 sts.

Row 7: K3, yfwd, DL, K6, (yfwd, K2tog, K1) 4 times. 22 sts.

Row 8: K5, (yfwd, K2tog, K1) 3 times, yfwd, K2tog, K2, M1, K3. 23 sts.

Row 9: K2, K2tog, yfwd, K2tog, K5, (yfwd, K2tog, K1) 4 times. 22 sts.

Row 10: Make picot, K4, (yfwd, K2tog, K1) 3 times, yfwd, K2tog, K2, yfwd, DL, K3. 22 sts.

Row 11: K3, M1, K6, (yfwd, K2tog, K1) 4 times. 23 sts.

Row 12: K5, (yfwd, K2tog, K1) 4 times, K2tog, yfwd, K2tog, K2. 22 sts.

Row 13: As 7th row.

Row 14: Make picot, K4, (yfwd, K2tog, K1) 3 times, yfwd, K2tog, K2, M1, K3. 23 sts.

Row 15: As 9th row.

Row 16: K5, (yfwd, K2tog, K1) 3 times, yfwd, K2tog, K2, yfwd, DL, K3. 22 sts.

Row 17: K3, M1, K6, yfwd, (K2tog, K1) twice, (yfwd, K2tog, K1) twice. 22 sts.

Row 18: Make picot, K4, yfwd, K2tog, K1, K2tog, yfwd, K2tog, K1, yfwd, K3, K2tog, yfwd, K2tog, K2. 21 sts.

Row 19: K3, yfwd, DL, K7, yfwd, K2tog, K2, (yfwd, K2tog, K1) twice. 21 sts.

Row 20: K5, yfwd, (K2tog) twice, yfwd, K2tog, K1, yfwd, K5, M1, K3. 22 sts.

Row 21: K2, K2tog, yfwd, K2tog, K7, (K2tog, K1) twice, yfwd, K2tog, K1. 19 sts.

Row 22: K5, K2tog, K2, yfwd, K1, K2tog, yfwd, K2tog, K1, yfwd, DL, K3. 18 sts.

The last 22 rows form the pattern, rept these 22 rows 5 (5, 6, 6, 7, 7, 8, 8) times more.

76 (86, 97, 107) cm, Sizes Only

Work 1st and 2nd row once more.

Cast off.

(81, 91, 102, 112) cm, Sizes Only

Work 1st to 6th rows once.

Cast off.

MAKING UP

Pin straight edge of lace edging to cast off sts of Back easing slightly to fit. Sew on by top sewing. Sew 2nd lace edging to Front in the same manner.

With right side facing, join shoulder seams from armhole edges by top sewing for 7.5 (9, 10, 10, 11.5, 12.5, 14, 14) cm, matching picots. Mark depth of armholes 17.5 (19, 20.5, 20.5, 23, 23, 24, 24) cm, from shoulder seams.

ARMHOLE EDGING (MAKE 2)

Using 3.00mm needles, cast on 5 sts. Knit 4 rows (1st row is right side).

Next Row: Make picot (see abbreviations), K to end.

Knit 1 row.

Repeat the last 6 rows until edging is long enough to fit round armhole finishing on a wrong side row.

Cast off.

Pin straight edge of armhole edging round armhole, sew on by top sewing. Join side seams and armhole edgings by top sewing.

Wentworth Distributors NZ Ltd
Free phone AU: 1800 150 542
Free phone NZ: 0800 738 998
www.naturallyyarnsnz.com

Crocheted Lace Silk Scarf

Design by Jodie Inglis for Kaalund Yarns

YARN

- 1 ball 30g Kaalund Yarns Enchantè 100% silk colour Pebble C1
- 1 ball 30g Kaalund Yarns Enchantè 100% silk colour Taupe C2

NEEDLES AND TOOLS

- 4.00mm crochet hook
- Wool sewing needle

TENSION

Not critical

SPECIAL ABBREVIATIONS

dtr: double treble

tr: treble

MEASUREMENTS

Size: Width 25 cm Length 123 cm

STITCH GUIDE

With a 4.00mm hook and C1 work 65 ch.

Row 1: miss 4 ch, 1 dtr, 1 tr in same ch, 2 ch, miss 2 ch, *1 tr, 1 dtr, 1 tr in same ch, 2 ch, miss 2 ch* 1 tr, 1 dtr, 1 tr, turn.

Change to C2.

Row 2: sl st into top of dtr of previous row, 5 ch, *1 tr into top of next dtr, 3 ch* to end, 3 ch, 1 tr into top of last dtr, turn.

Row 3: 4 ch, 1 dtr, 1 tr in same beg st, 2 ch, miss 3 ch, *1 tr, 1 dtr, 1 tr in next tr, 2 ch, miss 3 ch* last repeat is in top of turning ch, turn.

Repeat rows 2 and 3 changing colour every 2nd row.

EDGE

With RS of crocheting facing and with C1 work:

Round 1: *1 dc, 5 ch*, into each space around edge of scarf (except in corner space work *1 dc, 5 ch, 1 dc*) repeat from * to * around scarf.

Round 2: *1 dc into 5 ch space, 7

ch*, (except in corner space work *1 dc, 7 ch, 1 dc*) repeat from * to * around scarf.

Change to C2.

Round 3: 1 dc into 7 ch space, *3 ch, 3 tr, 3 ch, 3 tr into next space, 3 ch, 1 dc into next space* repeat from * to * around scarf.

End off and sew in ends securely using a wool sewing needle.

Kaalund Yarns

Shop 5, 216 Shaw Road
Wavell Heights Qld 4012

Ph: 07 3861 9403

www.kaalundyarns.com.au



Lace Shell Top

YARN

- 5, 5, 6, 7 balls 25gm Jo Sharp Rare Comfort Kid Mohair in Wisteria 607

NEEDLES AND TOOLS

5.00mm knitting needles
4.50mm circular needle
2 stitch holders

A sleeveless top with lace panel on bodice.

MEASUREMENTS

To fit bust: 80, 90, 100, 110cm
Finished fit: 83, 92, 101, 111cm
Garment length: 50, 51, 52, 53cm

TENSION

17 sts by 25 rows over Stocking st on 5.00mm needles to 10cm

WORKING PATTERN

FRONT & BACK (MAKE 2).

Using 5.00mm needles, cast on 74 (82, 90, 98) sts.

Row 1: RS - K1, *yon, K2, sl1, K2tog, pssso, K2, yon, K1; rep from * to last st, K1.

Row 2: WS - Purl.

Row 3: RS - K1, *yon, K2, sl1, K2tog, pssso, K2, yon, K1; rep from * to last st, K1.

Row 4: WS - Purl.

Row 5: RS - K2tog, *K2, yon, K1, yon, K2, sl1, K2tog, pssso; rep from * to last 3 sts, sl1, K1, pssso, K1.

Row 6: WS - Purl.

Row 7: RS - K2tog, * K2, yon, K1, yon, K2, sl1, K2tog, pssso; rep from * to last 3 sts, sl1, K1, pssso, K1.

Row 8: WS - Purl.

These 8 rows form lace patt. Rep these 8 rows, 5 times, dec 1 st at each end of last row worked. 72 (80, 88, 96) sts, 48 rows lace patt.

Working in St st for rem, work straight until length measures 30cm, ending on a WS row.

Shape armholes

Next Row: RS - Cast off 4 (5, 6, 7) sts at beg next 2 rows. 64 (70, 76, 82) sts.

Next Row: RS dec - Dec 1 st at each end of this row, then foll alt rows, 6 times. 50 (56, 62, 68) sts, 15 armhole shaping rows. Work 25 rows straight.

Shape neck

Next Row: RS - Work 17 (20, 23, 26) sts, turn, leaving rem 33 (36, 39,



42) sts on a holder.
 Work each side of neck separately.
Next Row: WS - Dec 1 st at neck edge of this row, and foll 8 (9, 10, 11) rows. 8 (10, 12, 14) sts, 9 (10, 11, 12) neck shaping rows.
 Work 0 (1, 3, 4) rows straight.



Shape shoulder

Next Row: RS - Cast off 4 (5, 6, 7) sts at beg of row.

Next Row: WS - Work 1 row.

Cast off rem 4 (5, 6, 7) sts.

Next Row: RS - Leaving centre 16 sts on holder, rejoin yarn to rem 17 (20, 23, 26) sts, work to end.

Shape neck

Next Row: WS - Dec 1 st at neck edge of this row, and foll 8 (9, 10, 11) rows. 8 (10, 12, 14) sts, 9 (10, 11, 12) neck shaping rows.

Work 1 (2, 4, 5) rows straight.

Shape shoulder

Next Row: WS - Cast off 4 (5, 6, 7) sts at beg of row.

Next Row: RS - Cast off rem 4 (5, 6, 7) sts.

MAKING UP

With RS tog, using backstitch, join shoulder seams. Using edge to edge st, join side seams.

NECKBAND

With RS facing, using 4.50mm circular needle and beg at shoulder seam, pick up 12 (14, 16, 18) sts down left side front neck, 16 sts from holder at centre front neck, 12 (14, 16, 18) sts up right side front neck, 12 (14, 16, 18) sts down right side back neck, 16 sts from holder at centre back neck, and 12 (14, 16, 18) sts up left side front neck. 80 (88, 96, 104) sts.

Work 3 rounds St st. Cast off.

ARMHOLE BAND

With RS facing, using 4.50mm circular needle and beg at under arm seam, pick up 92 (94, 96, 98) sts evenly around armhole.

Work 3 rounds St st. Cast off.

Jo Sharp

www.josharppatterns.com

www.biggandesign.com



**Premium First Cross
 4ply & DK Australian Merino
 in 64 Brilliant Colours**

K Stitch Beanie

Design by Jodie Inglis
for Kaalund Yarns

YARN

- 1 hank 100g Kaalund Yarns 8 Ply Wool colour Brick C1
- 1 hank 100g Kaalund Yarns 8 Ply Wool colour Fudge C2

NEEDLES

- 4.00mm crochet hook
- Wool sewing needle

TENSION

18 sts and 10 rows to measure 10cm x 10cm worked in treble stitches on 4mm hook.

SPECIAL ABBREVIATIONS

Trcl: Treble Cluster - work 2 treble stitches keeping the last loop of each treble on hook, (3 loops should be left on

hook) yarn over, pull through all loops.
Xtr: Cross Stitch - miss first treble, treble into next treble, treble into missed treble.

MEASUREMENTS

Size 54cm circumference

STITCH GUIDE

With a 4.00mm hook and C1 work 5 ch.

Row 1: 1 dc into 2nd ch from hook, 1 dc into next 3 ch (4 dc), 1 ch, turn. Repeat this row 97 times. (98 rows). Dc the 2 short ends together.

Round 1: 1 dc into each of 98 sts of previous row. Sl st to join.

Round 2: 3 ch, 1 tr into each dc of previous row. Sl st to join. Change to C2.

Round 3: Sl st into next tr, 3 ch, 1 tr into top of 3 ch of previous round, *1 xtr into top of tr of previous round (refer to special pattern notes for xtr sequence)*, repeat from * to * to end of round.

Change to C1.

Round 4: 3 ch, *1 tr into top of each tr of previous round*, repeat from * to * to end of round.

Change to C2.

Round 5: Repeat round 3 Change to C1.

Rounds 6 to 17: Repeat round 4 Change to C2.

Rounds 18 and 19: Repeat round 4.

Decrease round: 3 ch, 2 trcl into each st of previous round. Sl st into top of turning ch.

Repeat decrease round twice (3 decrease rounds in total).

End off leaving a 20cm length of yarn. Thread a wool sewing needle and with the wrong side of beanie facing, neatly oversew hole together. Sew in all ends of yarn.

Kaalund Yarns

Shop 5, 216 Shaw Road
Wavell Heights Qld 4012
Ph: 07 3861 9403
www.kaalundyarns.com.au



V-neck Sweater

1950's style sweater by Jo Sharp

YARN

- 9, 10, 11, 12 balls 50gm Jo Sharp Mulberry Silk Georgette in Pebble 763

NEEDLES AND TOOLS

- 3.25mm knitting needles
- 3.25mm circular needle
- 2 stitch holders

MEASUREMENTS

To fit bust: 80, 90, 100, 110cm
Finished fit: 85, 95, 104.5, 114cm
Garment length: 58, 59, 60.5, 61.5cm
Sleeve length: 48cm

TENSION

25 sts by 33 rows over Stocking st on 3.25mm needles to 10cm

WORKING PATTERN

FRONT

Using 3.25mm needles, cast on 119 (131, 143, 155) sts.

Row 1: RS - K2, *P1, K2; rep from * to end.

Row 2: WS - P2, *K1, P2; rep from * to end.

These 2 rows form K2, P1 rib pattern. Rep these 2 rows until length measures 8cm, ending on a WS row. (RS) Now working in St st throughout, work until length measures 12cm (from beg), ending on a WS row.

Shape bodice

Next Row: RS dec - K2, sl1, K1, pss0, K to last 4 sts, K2tog, K2.

This row sets patt for dec.

Dec 2 sts as set on foll 4th rows, 9 times. 99 (111, 123, 135) sts).

Work 7 rows straight.

Next Row: RS inc - K2, M1, K to last 2 sts, M1, K2.

This row sets patt for inc.

Inc 2 sts as set on foll 6th rows, 4 times. 109 (121, 133, 145) sts, 69 shaping rows).

** Cont working straight until length (from beg) measures 35cm, ending on a WS row ▶

Shape left V-neck

Next Row: RS - Work 54 (60, 66, 72) sts, turn, place rem 55 (61, 67, 73) sts on a holder. Work each side of neck separately.

Next Row: WS dec - Dec 1 st at beg (neck edge) of this row, then foll alt rows, 4 times.

Now cont neck shaping by dec 1 st

at beg of foll 4th rows, 15 (16, 17, 18) times, at the same time shape armholes as foll;

Shape left armhole RS - Cast off 6 (7, 8, 9) sts at beg (armhole edge) of this row.

Next Row: WS - Work 1 row.

Next Row: RS dec - K2, sl1, K1, pss0, work to end. This row sets patt for dec.





◀ **V-neck Sweater continued.**

Dec 1 st as set at beg (armhole edge) of foll alt rows, 7 (8, 9, 10) times. 31 (35, 38, 42) sts, 17 (19, 21, 23) armhole shaping rows.

Now cont v-neck shaping as set, whilst working straight at armhole edge, until v-neck shaping is complete. 20 (23, 26, 29) sts, 70 (74, 78, 82) v-neck shaping rows.

Next Row: RS - Work 6 rows straight.

Shape left shoulder RS - Cast off 7 (8, 9, 10) sts at beg of this row, then foll alt row.

Next Row: WS - Work 1 row.

Next Row: RS - Cast off rem 6 (7, 8, 9) sts.

Shape right V-neck

Next Row: RS - Leave centre st on holder, rejoin yarn to rem 54 (60, 66, 72) sts, work to end.

Next Row: WS dec - Dec 1 st at end (neck edge) of this row, then foll alt rows 4 times.

Now cont neck shaping by dec 1 st at end of foll 4th rows, 15 (16, 17, 18) times, at the same time shape armholes as foll;

Next Row: RS - Work 1 row.

Shape right armhole

Next Row: WS - Cast off 6 (7, 8, 9) sts at beg (armhole edge) of this row. Next Row: RS dec - K to last 4 sts, K2tog, K2. This row sets patt for dec.

Dec 1 st as set at end (armhole edge) of foll alt rows, 7 (8, 9, 10) times. 31 (35, 38, 42) sts, 17 (19, 21, 23) armhole shaping rows.

Now cont v-neck shaping as set, whilst working straight at armhole edge, until v-neck shaping is complete. 20 (23, 26, 29) sts, 70 (74, 78, 82) v-neck shaping rows.

Next Row: RS - Work 7 rows straight.

Shape right shoulder

Next Row: WS - Cast off 7 (8, 9, 10) sts at beg of this row, then foll alt row.

Next Row: RS - Work 1 row.

Cast off rem 6 (7, 8, 9) sts.

BACK

Work as for Front to **.

Now work straight until length (from beg) measures the same as Front to armhole shaping, ending on a WS row.

Shape armholes

Next Row: RS - Cast off 6 (7, 8, 9) sts at beg next 2 rows.

Next Row: RS dec - K2, sl1, K1, pssso, K to last 4 sts, K2tog, K2.

This row sets patt for dec.

Dec 1 st as set at each end of foll alt rows, 7 (8, 9, 10) times 81 (89, 97, 105) sts, 17 (19, 21, 23) armhole shaping rows.

Work 49 (51, 53, 55) rows straight.

Shape shoulders

Next Row: RS - Cast off 7 (8, 9, 10) sts at beg next 4 rows.

Next Row: RS - Cast off 6 (8, 7, 9) sts at beg of row, leave 41 (41, 47, 47) centre sts on a holder, rejoin yarn to rem 6 (8, 7, 9) sts, cast off.

SLEEVES

Using 3.25mm needles, cast on 53 (53, 59, 59) sts.

Row 1: RS - K2, *P1, K2; rep from * to end.

Row 2: WS - P2, *K1, P2; rep from * to end.

These 2 rows form K2, P1 rib pattern. Rep these 2 rows until length measures 6cm, ending on a WS row.

Shape sleeve

Next Row: RS inc - Working in St st throughout, inc 1 st at each end of foll 8th rows, 8 (15, 15, 10) times, then every foll 10 (10, 10, 6)th rows, 6 (1, 1, 8) times. 81 (85, 91, 95) sts, 125 (131, 131, 129) shaping rows. Cont working straight until length (from beg) measures 48cm, ending on a WS row.

Shape sleeve cap

Next Row: RS - Cast off 6 (7, 8, 9) sts at beg next 2 rows.

Next Row: RS dec - Dec 1 st at each end of this row, then foll 4th rows, 5 (6, 6, 7) times, then foll alt rows, 8 (7, 8, 7) times, then every row 9 times. 23 (25, 27, 29) sts, 48 (50, 52, 54) shaping rows.

Next Row: RS - Cast off 6 (7, 8, 9) sts at beg next 2 rows. Cast off rem 11 sts.

MAKING UP

Press all pieces (except ribs) gently, on WS using a warm iron over a damp cloth. With RS tog, using backstitch, join shoulder seams. With RS tog, centre sleeves to shoulder seam and using backstitch, join to bodice. Using edge to edge st, join side and sleeve seams.

NECKBAND

With RS facing, using a 3.25mm circ needle, pick up 78 (84, 87, 90) sts down left side front neck, 1 st from holder at centre front neck, 78 (84, 87, 90) sts up right side front neck, and 41 (41, 47, 47) sts from holder across back neck. 198 (210, 222, 228) sts.

Next Row: RS P1, *K2, P1; rep from * to 2 sts before centre front st, K2tog, K centre st, K2tog, P1, **K2, P1; rep from ** to end of round. Cont working in rounds, keeping rib patt correct, and always K2tog, either side of centre st, until neckband measures 4cm. Cast off in rib.

Jo Sharp

www.josharppatterns.com

Men's Ribbed Sweater

A handsome raglan sweater with wide ribbed borders on the bodice and sleeve.



YARN

- 15, 17, 19, 21 balls 50gm Jo Sharp Classic DK Wool in Heath 011

NEEDLES AND TOOLS

- 4.00mm knitting needles
- 4.00mm circular needle

MEASUREMENTS

To fit chest: 90, 100, 110, 120cm

Finished fit: 96, 107, 118, 128cm

Garment length: 67.5, 69, 70, 71.5cm

Sleeve length: 46, 46.5, 47.5, 48cm

TENSION

22.5 sts by 30 rows over of Stocking st on 4.00mm needles to 10cm

WORKING PATTERN

FRONT

Using 4.00mm needles, cast on 111 (123, 135, 147) sts.

Row 1: RS - Knit.

Row 2: WS - *P3, K1, P1, K1; rep from * to last 3 sts, P3.

These 2 rows form Rib Pattern. Rep these 2 rows until length measures 35cm, ending on a WS row.

Now work in St st, until length measures 45cm, ending on a WS row. **

Shape raglan armholes

Next Row: RS Cast off 4 (5, 6, 7) sts at beg next 2 rows. 103 (113, 123, 133) sts).

Next Row: RS dec - K2, sl1, K2tog, pssso, K to last 5 sts, K3tog, K2.

This row forms patt for dec.

Dec 2 sts as set at each end of foll alt rows, 0 (2, 4, 6) times, then foll 4th rows, 11 times 55 (57, 59, 61) sts, 47 (51, 55, 59) raglan shaping rows.

Work 3 rows straight. ▶





the same time, cont to dec 2 sts as set on raglan edge of foll 4th rows. 3 sts, 11 neck shaping rows.

Next Row: WS - Purl.

Cast off rem 3 sts.

BACK

Work as for front to **.

Shape raglan armholes

Next Row: RS - Cast off 4 (5, 6, 7) sts at beg next 2 rows. 103 (113, 123, 133) sts).

Next Row: RS dec - K2, sl1, K2tog, pssso, K to last 5 sts, K3tog, K2.

This row forms patt for dec. Dec 2 sts as set at each end of foll alt rows, 0(2, 4, 6) times, then foll 4th rows, 16 times. 35 (37, 39, 41) sts, 67 (71, 75, 79) raglan shaping rows. Leave sts on a holder.

RIGHT SLEEVE

Using 4.00mm needles, cast on 57 (57, 63, 63) sts.

Row 1: RS - Knit.

Row 2: WS *P3, K1, P1, K1; rep from * to last 3 sts, P3.

These 2 rows form Rib Pattern.

Rep these 2 rows until length measures 8cm, ending on a WS row.

Shape sleeve

Next Row: RS inc - Keeping Rib Pattern correct, inc 1 st at each end of this row, then foll 6th rows, 13 times 85 (85, 91, 91) sts.

Now working in St st, inc 1 st at each end foll 6th rows, 3 (5, 4, 6) times. 91 (95, 99, 103) sts, 97 (109, 103, 115) shaping rows.

Work 11 (7, 15, 5) rows straight (or to length desired).

Shape raglan

Next Row: RS - Cast off 4 (5, 6, 7) sts at beg next 2 rows.

Next Row: RS dec - K2, sl1, K2tog, pssso, K to last 5 sts, K3tog, K2.

This row forms patt for dec.

Dec 2 sts as set at each end of foll 6th rows, 1 (2, 3, 4) times, then foll 4th rows, 13 (13, 12, 12) times 23

(21, 23, 21) sts, 61 (67, 69, 75) raglan shaping rows. **

Work 3 (1, 3, 1) rows straight.

Next Row: RS - Cast off 7 (6, 7, 6) sts at beg of row, K to last 5 sts, K3tog, K2.

Next Row: WS - P to end.

Next Row: RS - Cast off 7 (6, 7, 6) sts at beg of row, K to end.

Next Row: WS - P to end.

Cast off rem 7 sts.

LEFT SLEEVE

Work as for Right Sleeve to **.

Work 3 (1, 3, 1) rows straight.

Next Row: RS - K to last 5 sts, K3tog, K2.

Next Row: WS - Cast off 7 (6, 7, 6) sts at beg of row, P to end.

Next Row: RS - Knit.

Next Row: WS - Cast off 7 (6, 7, 6) sts at beg of row, P to end.

Next Row: RS - Cast off rem 7 sts.

MAKING UP

Press all pieces gently on WS using a warm iron over a damp cloth. Using edge to edge st join raglan seams, making sure to join left and right sleeve correctly, as raglan top shaping forms part of neckband. Join side and sleeve seams.

NECKBAND

With RS facing, using 4.00mm circular needle, pick up and knit 8 sts down left side front neck, 17 (19, 21, 23) sts from holder at centre front, 8 sts up left side front neck, 17 (15, 16, 14) sts across sleeve right sleeve top, 35 (37, 39, 41) sts from holder at back neck and 17 (15, 16, 14) sts across left sleeve top. 102 (102, 108, 108) sts).

Round 1: RS - Knit.

Round 2: RS - *K3, P1, K1, P1; rep from * to end.

These 2 rounds form Rib Patt.

Rep these 2 rounds until neckband measures 5cm. Cast off in rib.

Jo Sharp

www.josharpatterns.com

◀ Men's Ribbed Sweater continued.

Shape left neck and raglan

Next Row: RS - K2, sl1, K2tog, pssso, K14, turn, leaving rem 36 (38, 40, 42) sts on a holder. Work each side of neck separately.

Next Row: WS dec - Dec 1 st at neck edge of this row, and foll 9 rows, at the same time, cont to dec 2 sts as set on raglan edge of foll 4th rows. 3 sts, 11 neck shaping rows.

Next Row: WS - Cast off rem 3 sts.

Shape right neck and raglan

Next Row: RS - With RS facing, leave center 17 (19, 21, 23) sts on a holder, rejoin yarn to rem 19 (19, 19, 19) sts, K to last 5 sts, K3tog, K2.

Next Row: WS dec - Dec 1 st at neck edge of this row, and foll 9 rows, at

Scarf or Shouderette

Snug warmth in Noro Kureyon yarn. Design by Alison Craven

YARN

- 3 balls Noro Kureyon

NEEDLES AND TOOLS

- 10.00mm knitting needles
- 12.00mm knitting needles
- Wool sewing needle

TENSION

Not critical to project

SPECIAL ABBREVIATIONS

Kfb – knit in front and back of stitch

MEASUREMENTS

Size 40cm

STITCH GUIDE

Using 10.00mm needles cast on 3 stitches.

Row 1: K1, Kfb in next stitch (to make a stitch) K1. 4 stitches.

Row 2: K1, Kfb into next 2 sts, K1. 6 stitches

Beg patt:

Slip 1, Kfb, Knit to last 2 stitches, Kfb, K1.

Continue in pattern until work measures 40 cm from beginning.

Change to 12.00mm needles.

Work 1 row without shaping.

Cast off.

MAKING UP

Sew in ends.

Knitting Yarns by Mail
114 Fox and Fanckes Rd
Boolarra Sth, Vic
Ph: 0408 992 927
www.knittingyarns.com.au



Mesh Tops

Long or short, this mesh top is the perfect summer knit. Design by Wendy



YARN

- Long Version: 4, 5, 5, 6, 6, 6 balls
100gm Wendy Supreme Cotton 4ply
- Short Version: 3, 4, 4, 4, 5, 5 balls
100gm Wendy Supreme Cotton 4ply

NEEDLES AND TOOLS

- 4.00mm knitting needles
- 5.50mm knitting needles
- Stitch holder

MEASUREMENTS

Size: 76-81, 86-91, 97-102, 107-112, 117-122, 127-132cm

Finished fit: 122, 137, 152, 163, 178, 188cm

Garment length: 56, 58, 59, 63, 66.5, 71cm

Short version: 30.5, 32, 32.5, 34.5, 36, 38cm

$\frac{3}{4}$ Sleeve length: 21, 22, 23, 24, 25, 26cm

Ribbed sleeve: 15, 15, 17, 17, 18, 18cm

TENSION

28sts by 30 rows over 2 x 2 rib on 4.00mm needles to 10cm

17sts by 24 rows over lace patt on 5.50mm needles to 10cm

TOP – LONG VERSION

BACK

Using 4.00mm needles, cast on 105 (117, 129, 137, 149, 161) sts.

Row 1: RS - *K2, P2, rept from * to last st, K1.

Row 2: P1, *K2, P2, rept from * to end.

These 2 rows form rib.

Work in rib for a further 9 rows.

Change to 5.50mm needles.

Row 12: Inc 1 (1, 1, 0, 0, 0) st, P to last st, inc 1 (1, 1, 0, 0, 0) st. 107 (119, 131, 137, 149, 161) sts.



Row 13: K3, * yo, sl 1, K2, pssso, rept from * to last 2sts, K2.

Row 14: Purl

Row 15: K2, *sl 1, K2, pssso, yo, rept from * to last 3sts, K3.

Row 16: Purl

The last 4 rows set Lace pattern. Keeping sts correct throughout as now set, cont as follows: -

***Cont straight until Back measures 50 (52, 53, 57, 61, 65cm) ending with a wrong side row.

Shape Neck

Next Row: RS - K46 (51, 57, 60, 66, 70) and turn leaving rem sts on a holder. 46 (51, 57, 60, 66, 70) sts. Work on this set of sts only for the first side of neck.

**Cast off 4 (4, 3, 3, 3, 3) sts at neck edge of next and 1 (1, 2, 2, 2, 2) following alt rows. 38 (43, 48, 51, 57, 61) sts.

Dec 1 st at neck edge on next and 2 (2, 3, 3, 4, 4) foll 3rd (3rd, 2nd, 2nd, 2nd, 2nd) rows. 35 (40, 44, 47, 52, 56) sts.

Work 8 rows.

For 127-132cm sizes only

Work 2 more rows.

All sizes

Cast off rem 35 (40, 44, 47, 52, 56) sts.

Return to sts left on holder, rejoin yarn with RS facing, cast off centre 15 (17, 17, 17, 17, 21) sts, K to end. 46 (51, 57, 60, 66, 70) sts.

Work one row.

Complete to match first side of neck shaping from**.

FRONT

Work as given for back.

¾ SLEEVES (BOTH ALIKE)

Using 4.00mm needles, cast on 93 (101, 109, 125, 125, 133) sts.

Work in rib as given for back for 11 rows.

Change to 5.50mm needles.

Row 12: Inc 1 (2, 1, 2, 2, 1) st, P to last st, inc 1 (1, 0, 1, 1, 0) st. 95 (104, 110, 128, 128, 134) sts.

Row 13: K3, * yo, sl 1, K2, pssso, rept from * to last 2sts, K2.

Row 14: Purl

Row 15: K2, *sl 1, K2, pssso, yo, rept from * to last 3sts, K3.

Row 16: Purl

The last 4 rows set Lace pattern.

Keeping sts correct throughout as now set, cont as follows:

Cont straight until Sleeve measures 21 (22, 23, 24, 25, 26) cm, ending with a RS row.

Cast off rem 95 (104, 110, 128, 128, 134) sts.

NECKBAND

Join left shoulder seam.

Using 4.00mm needles and with RS facing pick up and knit 26 (27, 27, 27, 28, 32) sts down front right side of neck, 15 (17, 17, 17, 17, 21) sts from front cast off sts, and 26 (27, 27, 27, 28, 32) sts up front left side of neck, pick up and knit 26 (27, 27, 27, 28, 32) sts down left side of back neck, 14 (16, 16, 16, 16, 20) sts from back cast off sts, 26 (27, 27, 27, 28, 32) sts up back right side of neck. 133 (141, 141, 141, 141, 145) sts.

Work in rib as given for back for 7 rows.

Cast off loosely.



Row 1: RS - *K2, P2, rept from * to last st, K1.

Row 2: P1, *K2, P2, rept from * to end. These 2 rows form rib.

Work in rib for a further 9 rows. Change to 5.50mm needles.

Row 12: Inc 1 (1, 1, 0, 0, 0) st, P to last st, inc 1 (1, 1, 0, 0, 0) st. 107 (119, 131, 137, 149, 161) sts.

Row 13: K3, *yo, sl 1, K2, pssso, rpt from * to last 2 sts, K2.

Row 14: P

Row 15: K2, *sl 1, K2, pssso, yo, rpt from * to last 3 sts, K3.

Row 16: P

The last 4 rows set Lace pattern. Keeping sts correct cont straight for 10cm.

Next Row: K1, *P1, K1, rept from * to end.

This one row sets Moss st pattern (see abbreviations). Cont in this pattern for 10cm.

Cont straight changing between the lace pattern and Moss stitch pattern each time 10cm have been worked, until Back measures 50 (52, 53, 57, 61, 65) cm, ending on a WS row.

Shape Neck

Work as given for longer version top but complete in garter st.

FRONT

Work as given for back.

¾ SLEEVES (BOTH ALIKE)

Work as given for longer version top.

NECKBAND

Work as given for longer version top.

MAKING UP

Join right shoulder seam by top sewing. Join neckband. Insert sleeves. Join side and sleeve seams by top sewing.

Wentworth Distributors NZ Ltd
Free phone AU: 1800 150 542
Free phone NZ: 0800 738 998
www.naturallyyarnsnz.com

Mesh Tops continued.

TOP - SHORT VERSION

BACK

Work as given for back of longer version top until ***. Cont straight until Back measures 25 (26, 26.5, 28.5, 30.5, 32.5) cm, ending with a WS row.

Shape Neck

Work as given for longer version top.

FRONT

Work as given for back.

RIBBED SLEEVES (BOTH ALIKE)

Using 5.50mm needles cast on 93 (101, 109, 125, 125, 133) sts.

Work in rib as given for back until sleeve measures 15 (15, 17, 17, 18, 18) cm, from beg. Cast off loosely in rib.

NECKBAND

Work as given for longer version top.

MAKING UP

Join right shoulder seam by top sewing. Join neckband. Insert sleeves. Join side and sleeve seams by top sewing.

TOP - TWO PATTERNED VERSION BACK

Using 4.00mm needles, cast on 105 (117, 129, 137, 149, 161) sts.

Ribbed Scarf

A softly draped ribbed scarf.

YARN

- 4 balls 50gm Jo Sharp Silkroad DK Tweed in colour 1 Magnolia 407
- 2 balls 50gm Jo Sharp Soho Summer DK in Cotton colour 2 Oyster 235
- 2 balls 50gm Jo Sharp Soho Summer DK in Cotton colour 3 Calico 228
- 2 balls 50gm Jo Sharp Soho Summer DK in Cotton colour 4 Fob 250

NEEDLES AND TOOLS

- 12.00 mm needles

MEASUREMENTS

Size 168cm x 40cm

TENSION

13sts by 14 rows over of k1, p1 rib using two yarns together on 12.00mm needles to 10cm

GETTING STARTED

Note: Tension varies between knitters, especially on the large needles used in this pattern. This scarf looks great in a variety of tensions, therefore we advise knitters to enjoy the process and enjoy the result – the finished length or width may vary a little from the measurements given in this pattern. Size 10.00mm needles also work successfully for a slightly firmer fabric.

WORKING PATTERN

SCARF

Using 12.00mm needles and cols 1 and 2 held tog, cast on 51 sts.
Work 60 rows in k1, p1 rib.
Change to cols 1 and 3, work 60 rows.
Change to cols 1 and 4 work 60 rows.
Total length 168cm.
Cast off in rib.

MAKING UP

Note: Take care not to end any shades mid way through a row, as this will make

sewing in ends unsightly. The usual way of sewing in ends will not hold securely into this open weave fabric. Ends should be secured by over sewing along the edges of work

using a fine sewing needle and cotton thread.

Jo Sharp

www.josharppatterns.com



Motif Top

Design by Patons

YARN

- 16 balls 50gm Patons Cotton Blend 8ply in Cream 03

NEEDLES AND TOOLS

- 4.00mm crochet hook
- Wool sewing needle

MEASUREMENTS

Size: One size fits most
Width back/front: 72cm
Garment length: 70cm

SPECIAL ABBREVIATIONS

Popcorn A = 3ch, 4tr in ring, draw up the lp. Remove hook from lp, then insert hook from front to back through 3rd ch. Replace lp on hook and draw through st, reducing lp size to normal.

Popcorn B = 5tr in 5ch sp, draw up the lp. Remove hook from lp, then insert hook from front to back through first tr of 5tr. Replace lp on hook and draw through st, reducing lp size to normal (see diagram).

Dec = * yoh and draw up a lp in next st or sp, yoh and draw through 2 lps, rep from * in next st or sp, yoh and draw through all 3 lps on hook.

Picot = 3ch, sl st into first of these ch.

TENSION

First 4 rounds of Motif measure 11cm across, using 4.00mm hook

GETTING STARTED

Note: Australian/UK crochet terminology used throughout.

WORKING PATTERN

MOTIF (MAKE 2)

Using 4.00mm hook, make 10ch and join with a sl st in first ch to make a ring.

Round 1: Popcorn A, 1ch, (Popcorn B in ring, 5ch, Popcorn B in ring, 1ch) 3 times, Popcorn B in ring, 5ch, sl st in top of first Popcorn.

Round 2: 4ch, miss 1ch sp, * 1tr in next Popcorn, 1ch, (Popcorn B, 5ch, Popcorn B) in next 5ch sp, 1ch, 1tr in next Popcorn, 1ch, rep from * twice, 1tr in next Popcorn, 1ch, (Popcorn B, 5ch, Popcorn B) in next 5ch sp, 1ch, sl st in 3rd of 4ch at beg.

Round 3: 4ch, 1tr in next tr, 1ch, 1tr in first Popcorn, 1ch, * (Popcorn B,



5ch, Popcorn B) in corner 5ch sp, 1ch, 1tr in next Popcorn, (1ch, 1tr in next tr) twice, 1ch, 1tr in next Popcorn, 1ch, rep from * twice, (Popcorn B, 5ch, Popcorn B) in corner 5ch sp, 1ch, 1tr in last Popcorn, 1ch, sl st in 3rd of 4ch at beg.

Round 4: 4ch, (1tr, 1ch) in each tr to first Popcorn, 1tr in Popcorn, 1ch, * (Popcorn B, 5ch, Popcorn B) in corner 5ch sp, 1ch, 1tr in next Popcorn, 1ch, (1tr, 1ch) in each tr to next Popcorn, 1tr in next Popcorn, 1ch, rep from * twice, (Popcorn B, 5ch, Popcorn B) in corner 5ch sp, 1ch, 1tr in last Popcorn, 1ch, (1tr, 1ch) in each tr to end, sl st in 3rd of 4ch at beg.

Rep round 4 another 5 times.

Round 10: 3ch, 1tr in first ch sp, * (1tr in next tr, 1tr in next ch sp) to next Popcorn, 1tr in Popcorn, 7tr in corner, 1tr in next Popcorn, 1tr in next ch sp, rep from * 3 times, (1tr in next tr, 1tr in next ch sp) to end, sl st in 3rd ch at beg.

Round 11: 3ch, * 1tr in each tr to centre tr at next corner, 3tr in centre tr, rep from * 3 times, 1tr in each tr to end, sl st in 3rd ch at beg.

Fasten off.

BACK/FRONT (MAKE 2 PIECES ALIKE)

Begin Side Panels

With RS of Motif facing and using 4mm hook, join yarn with a sl st in centre tr of first corner.

Row 1: 3ch (counts as first tr), 1tr in each of next 44tr, turn. 45tr.

Row 2: (1dc, 1ch) in first tr, * 1ch, miss 1tr, 1tr in next tr, rep from * to end.

Row 3: (1dc, 1ch) in first tr, * 1tr in ch sp, 1tr in next tr, rep from * to end.

Row 4: (1dc, 1ch) in first tr, 1tr in each st to end.

Row 5: As row 4.

Rows 2 to 5 incl form patt.

Cont in patt until work measures approx 36cm from centre of Motif, ending with row 5.

Fasten off.

With RS of Motif facing and using 4mm hook, join yarn with a sl st in centre tr of third corner.

Work as for first side panel, but do not fasten off.

Begin Lower Panel

With RS facing, turn to work across second side panel row ends, 3ch, work 41tr evenly across second side panel, work 49tr across side of motif, then work 42tr evenly across first side panel. 133tr.

Work in patt as for side panels, beg with a 2nd row, until lower panel measures approx 40cm from centre of Motif, ending with row 5.

Fasten off.

Beg Upper Panel

With RS facing and using 4.00mm hook, join yarn with a sl st in corner of first

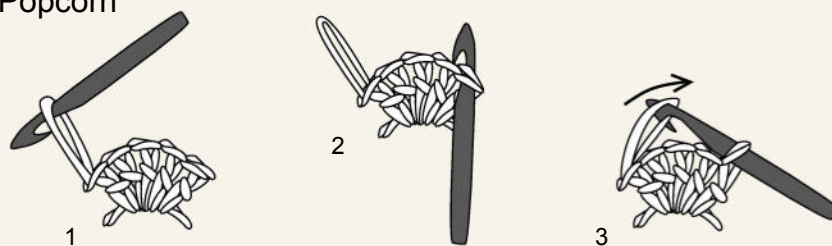
side panel row ends, 3ch, work 41tr evenly across first side panel, work 49tr across side of motif, then work 42tr evenly across second side panel. 133tr. Work 3 rows patt as for side panels, beg with row 2.

Shape Neck and Shoulders

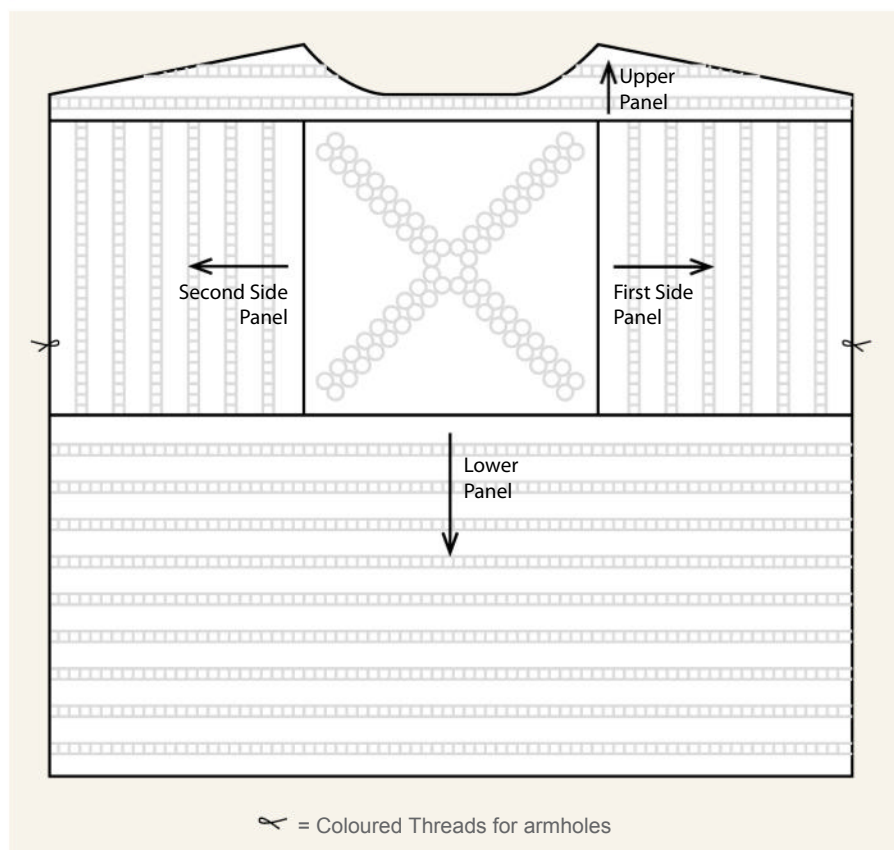
Row 1: Sl st in each of first 4tr, 1dc in each of next 4tr, 1hr in each of next 4tr, 1tr in each of next 37tr, Dec, 1tr in next tr, turn, leaving rem sts unworked.

Row 2: (1dc, 1ch) in first tr, Dec, (1ch, miss 1tr, 1tr in next tr) 12 times, 1hr in each of next 4 sts, 1dc in each of next 4 sts, turn, leaving rem sts unworked. ▶

Popcorn



1. After working 5tr in next 5ch space, draw up the lp.
2. Remove hook from lp, then insert hook from front to back through first of the 5tr.
3. Replace lp on hook and draw through top of tr, reducing lp size to normal.



◀ Motif Top continued.

Row 3: Sl st in each of first 12 sts, (1dc in next tr, 1dc in next ch sp) twice, (1htr in next tr, 1htr in next ch sp) twice, (1tr in next tr, 1tr in next ch sp) 5 times, 1tr in next tr, Dec, 1tr in last st.

Row 4: (1dc, 1ch) in first tr, Dec, 1htr in each of next 2tr, 1dc in each of next 4tr, turn.

Row 5: Sl st in each st to neck edge, turn.

Work 1 row of tr across all sts to armhole edge. Fasten off.

With RS facing, miss next 29tr at centre and, join yarn with a sl st in next st.

Row 1: (1dc, 1ch) in same st as sl st, Dec, 1tr in each tr to last 12 sts, 1htr in each of next 4tr, 1dc in each of next 4tr, turn, leaving rem 4 sts unworked.

Row 2: Sl st in each of first 12 sts, 1dc in each of next 4tr, 1htr in each of next 4tr, (1tr in next tr, 1ch, miss 1tr) 12 times, Dec, 1tr in last st.

Row 3: (1dc, 1ch) in first tr, Dec, (1tr in next tr, 1tr in next ch sp) 5 times, 1tr in next tr, (1htr in next ch sp, 1htr in next tr) twice, (1dc in next ch sp, 1dc in next tr) twice, turn, leaving rem sts unworked.

Row 4: Sl st in each of first 12 sts, 1dc in each of next 4tr, 1htr in each of next 2tr, Dec, 1tr in last st.

Work 1 row of tr across all sts to armhole edge. Fasten off.

Note: Overall length is approx 5cm shorter than stated to allow for dropping when worn.

PICOT EDGINGS

Armhole Edgings

Using a flat seam, join shoulder seams. At armhole edge measure 25cm down each side from shoulder seam and tie a coloured thread to mark beg of armhole opening. Join side seams to coloured threads.

With RS facing, using 4.00mm hook and beg at top of side seam, work picot edging as follows:

Next Round: Sl st at beg of armhole opening, 1ch, (1dc in next st or sp) 3 times, * Picot, (1dc in next st or sp) 3 times, rep from * evenly around armhole opening, sl st in first dc at beg. Fasten off.

Neck Edging

With RS facing, using 4.00mm hook and beg at shoulder seam, work picot edging as given for armhole, evenly around neck.

Lower Edging

With RS facing, using 4.00mm hook and beg at side seam, work picot edging as given for armhole, evenly around lower edge.

MAKING UP

Sew in ends.

Patons

Ph: 1800 337 032

www.patonsyarns.com.au

Crochet Hat and Rucksack

Design by Wendy

YARN

Hat

- 2 balls 100gm Wendy Supreme Luxury Cotton DK main colour
- 1 ball 100gm Wendy Supreme Luxury Cotton DK A colour
- 1 ball 100gm Wendy Supreme Luxury Cotton DK B colour

Rucksack

- 3 balls 100gm Wendy Supreme Luxury Cotton DK main colour
- 1 ball 100gm Wendy Supreme Luxury Cotton DK A colour
- 1 ball 100gm Wendy Supreme Luxury Cotton DK B colour
- 1 button

NEEDLES AND TOOLS

- 3.50mm crochet hook

MEASUREMENTS

Hat size: 54-56cm

Rucksack size: 33x33cm, excluding strap

TENSION

17 sts by 15 rows over stripe pattern on 3.50mm hook to 10cm

WORKING PATTERN

HAT

Using 3.50mm hook and M, make 6 ch, join with a slip st to form a ring.

Continue in M in patt as follows:-

Row 1: RS - 2 ch (counts as 1 htr), work 11 htr into ring, ss into top of 2 ch. 12 sts.

Row 2: 2 ch, 1 htr into same st, 2 htr into next and every st to end, slip st into top of 2 ch. 24 sts.

Row 3: 2 ch, 1 htr into same st, 1 htr into next st, * 2 htr into next st, 1 htr into next st, rept from * to end, slip st into top of 2 ch. 36 sts.

Row 4: 2 ch, 1 htr into same st, 1 htr into each of next 2 sts, * 2 htr into next st, 1 htr into each of next 2 sts, rept from * to end, slip st into top of 2 ch. 48 sts.

Row 5: 2 ch, 1 htr into same st, 1 htr into each of next 3 sts, * 2 htr into next st, 1 htr into each of next 3 sts, rept from * to end, slip st into top of 2 ch. 60 sts.

Row 6: 2 ch, 1 htr into same st, miss next st, * 2 htr into next st, miss next st, rept from * to end, slip st into top of 2 ch.

Row 7: 2 ch, 1 htr into same st, 1 htr into each of next 4 sts, * 2 htr into next

st, 1 htr into each of next 4 sts, rept from * to end, slip st into top of 2 ch. 72 sts.

Row 8: As 6th row.

Row 9: 2 ch, 1 htr into same st, 1 htr into each of next 5 sts, * 2 htr into next st, 1 htr into each of next 5 sts, rept from * to end, slip st into top of 2 ch. 84 sts.

Row 10: As 6th row.

Row 11: 2 ch, 1 htr into same st, 1 htr into each of next 13 sts, * 2 htr into next st, 1 htr into each of next 13 sts, rept from * to end, slip st into top of 2 ch. 90 sts.

Work in stripes as follows:-

Row 12: As 6th row, but pull through ss at end of row with A, turn.

Row 13: Using A, 2 ch, 1 htr into first sp made where htr groups meet, * miss 2 sts, 2 htr into next sp, rept from * to last 2 sts, miss 2 sts, slip st into top of 2 ch, pull through with B, turn.

Row 14: Using B, as 13th row, pull thread through with M at end of row, turn.

Row 15: Using M, as 13th row, pull through with A at end of row, turn. Rept the 13th, 14th and 15th rows once, then 13th row once more, change to M at end of last row, turn.

Row 20: Using M, 1 ch, 1 dc into each st to end, slip st into first ch.

Shape Brim

Next Row: Using M, 2 ch, 1 htr into same st, 1 htr into each of next 4 sts, * 2 htr into next st, 1 htr into each of next 4 sts, rept from * to end, slip st into top of 2 ch. 108 sts.

Rept 6th row once, turn at end of row.

Working all in M, rept 13th row 3 times.

Rept the 13th, 14th and 15th rows once, then 13th row once more.

Patt 3 rows.

Rept the 20th row twice, then 6th row once.

Work 9 more rows in patt, then 2 rows dc. Fasten off.

Fold brim to wrong side or alternatively wear as a Beanie hat. ▶

RUCKSACK

Note: When changing colour, leave yarn not in use attached, to be picked up as required.

BACK

Using 3.50mm hook and M, make 72 ch.

Foundation row - 1 dc into 2nd ch from hook, 1 dc into each ch to end, turn. 71 sts.

Row 1: RS - Using M, 2 ch (counts as 1 htr), 2 htr into next st, * miss

next st, 2 htr into next st, rept from * to end, ending with 1 htr into last st, turn.

Row 2: Using A, 2 ch, 1 htr into same st, * miss next 2 sts, 2 htr into sp made where htr groups meet, rept from * to last 3 sts, miss 2 sts, 2 htr into top of turning ch, turn.

Row 3: Using B, 2 ch, miss next st, 2 htr into first sp, * miss next 2 sts, 2 htr into next sp, rept from * to last 2 sts, miss next st, 1 htr into top of turning ch, turn.





◀ Crochet Hat and Rucksack continued.

The 2nd and 3rd rows form patt. Continue in patt working 1 row M, 1 row A and 1 row B throughout until work measures approx 30cm, 12ins from beg, ending after a 3rd patt row.

Form Openings for Drawstring

Next Row: Using M, 2 ch, 1 htr into each of next 2 sts, * 2 ch, miss next 2 sts, 1 htr into each of next 7 sts, rept from * to last 5 sts, 2 ch, miss 2 sts, 1 htr into each of next 2 sts, 1 htr into top of turning ch, turn.

Next Row: Using M, 2 ch, work 1 htr into each st across row, working 2 htr into each 2 ch space, end with 1 htr into top of turning ch, turn.

Work one more row of htr in M.

Next Row: Using M, 1 ch, 1 dc into each st to end, fasten off.

FRONT

Work as given for Back.

BASE

Using 3.50mm hook and M throughout, make 64 ch.

Foundation row: 1 htr into 4th ch from hook, 1 htr into each ch to end, turn. 62 sts.

Row 1: RS - 2 ch, 1 htr into each st to end, working last htr into top of turning ch, turn.

Work 2 more rows of htr.

Next Row: Slip st into next st, 2 ch, work 2 htr together over next 2 sts (count as one st), 1 htr into each st to last 4 sts, 2 htr together, 1 htr into next st, turn.

Rept last row twice more. 50 sts.

Fasten off.

With right side facing, join M to first st on base ch 2 ch, 1 htr into each st across base ch to end, turn.

Complete to match first side to end.

Fasten off.

FLAP

Using 3.50mm hook and M throughout, make 38 ch.

Work Foundation row as for Back.

37 sts.

Working all using M, continue in patt as for Back for 27 more rows.

Fasten off.

FLAP EDGING

With RS facing, using 3.50mm hook, join M to top corner of Flap.

Work 1 row of dc evenly to lower edge, 1 dc each st across base ch to end, work a row of dc to top corner, fasten off.

POCKET

Using 3.50mm hook and M throughout, make 30 ch.

Work Foundation row as for Back.

29 sts.

Work 18 more rows in patt as for Back.

Work 1 row dc. Fasten off.

BACK STRAPS (MAKE 2)

Using 3.50mm hook and M, make 6 ch.

Work Foundation row as for Back.

5 sts.

Row 1: 1 ch, 1 dc into each of next 4 sts, turn.

Rept the 1st row until strap measures approx 53cm, 21ins. Fasten off.

DRAWSTRING

Using 3.50mm hook and using 3 strands of M together, crochet a chain approx 91cm, 36ins long. Fasten off.

MAKING UP

Join side seams of Back and Front by top sewing. Sew base to Lower Edge of Bag, inserting end of each Back Strap approx 15cm, 6ins apart. Centre the Pocket on Front approx 5cm, 2ins from lower edge and sew in place.

Centre the Flap on Back of Bag across first row below Drawstring openings.

Insert Back Strap ends on right side between Bag and Flap approx 10cm, 4ins apart and sew in place.

Make a loop in centre of flap to fit button size and blanket st around loop. Sew on button to correspond.

Wentworth Distributors NZ Ltd

Free phone AU: 1800 150 542

Free phone NZ: 0800 738 998

www.naturallyarnsnz.com

Ear Warmer

Design by Alison Craven



YARN

1 ball Heirloom Merino Magic 8 ply
3 buttons (small) or 2 buttons (med/
large)

NEEDLES AND TOOLS

3.25mm knitting needles
Wool sewing needle

MEASUREMENTS

Size adult

TENSION

Not critical to project

WORKING PATTERN

Cast on 114 sts loosely.

Row 1: K2* P2,K2 repeat from * to end.

Row 2: P2 * K2,P2 repeat from * to end.

These 2 rows form rib pattern.

Continue in rib pattern until work
measures 8cm from cast on edge.

Cast off loosely in rib pattern.

MAKING UP

Form into a circle overlapping ends
slightly.

Pin into place and try on for size. If
too large increase overlap until desired
fit is achieved. Ear warmer should be
firm but not tight.

Sew buttons evenly onto overlap, close
to edge, securing both layers.

Fasten off.

Knitting Yarns by Mail

114 Fox and Fances Rd

Boolarra Sth, Vic

Ph: 0408 992 927

www.knittingyarns.com.au



Australian **Knitting**
Yarn • Embellishments • Patterns

Advertise here

**Call Simon Mullen
on (02) 4733 8482**

blacksheep wool'n'wares

Well worth a visit

Phone: 02 6779 1196
shop@blacksheepwool.com.au

www.blacksheepwool.com.au

Waves of the O'ways

Design by Virginia Atkins for Knitalpaca

YARN

Wrap

- 4 x balls knitalpaca Luxa 100% alpaca in main colour A
- 1 x ball knitalpaca Luxa 100% alpaca in colour B

- 1 x ball knitalpaca Luxa 100% alpaca in colour C
- 1 x ball knitalpaca Luxa 100% alpaca in colour D
- 1 x ball knitalpaca Luxa 100% alpaca in colour E

Scarf

- 5 x balls knitalpaca Luxa 100% alpaca

NEEDLES

- 8.00mm knitting needles
- 8.00mm circular needle

TENSION

Not critical to this project

MEASUREMENTS

Wrap: length 78 cm x width 150 cm
Scarf: length 140 cm x width 25cm

STITCH GUIDE

Pattern

Row 1: knit.

Row 2: purl.

Row 3: K1, *K2 tog 3 times, yo, K1 6 times, k2tog 3 times*. Repeat from * to *, k1.

Row 4: knit.

These four rows make up the pattern.

WRAP

Using colour A and 8.00mm needles, cast on 182 sts.

Work two pattern repeats. 8 rows.

Using colour B work a further two pattern repeats.

Continue working in this way, arranging colours as follows: A, B, A, C, A, D, A, E, A, D, A, C, A, B, A.

Cast off loosely. To finish, darn in ends and lightly block if desired.

SCARF

Using 8.00mm needles cast on 38 stitches.

Work 4 row pattern until work measures 140 cm or desired length.

Cast off loosely. Darn in ends.

Knitalpaca

Ph: 03 5235 9208

www.knitalpaca.com.au



Cropped Top

Design by Panda Yarns

YARN

- 4, 5, 6 balls 100gm Panda Minky Plush main colour (M) Eggshell 208
- 2, 2, 2 balls 100gm Panda Magnum Soft contrast colour (CC) in White 4600

NEEDLES AND TOOLS

- 5.00mm crochet hook
- Wool sewing needle

MEASUREMENTS

Size: 8-10, 12, 14-16
To fit bust: 70, 80, 90cm
Finished fit: 88, 98, 108cm
Garment length: 40, 47, 51cm

SPECIAL ABBREVIATIONS

Cluster = * yoh, draw up a lp in specified st, yoh and draw through 2 lps on hook, rep from * twice in same st, yoh and draw through all 4 lps on hook.

Dec = draw up a lp in each of next 2 sts, yoh and draw through all 3 lps on hook.

TENSION

7 Clusters by 8.5 rows over patt, on 5mm hook to 10cm

GETTING STARTED

Note: Australian/UK crochet terminology used throughout.

WORKING PATTERN

BACK

Using 5.00mm hook and M, make 66 (74, 82) ch loosely.
Foundation Row: Miss 5ch, * Cluster in next ch, 1ch, miss 1ch, rep from * to last ch, 1tr in last ch. 30 (34, 38) Clusters.

Begin cluster patt

Note: When changing colour, use new colour for final lp of last st. ▶



Crochet Motif Cardigan

Design by Wendy

YARN

- 5 balls 100gm Wendy Supreme
Luxury Cotton Silk DK in Rice 1510
- One button

NEEDLES AND TOOLS

- 4.50mm crochet hook
- 4.00mm crochet hook

MEASUREMENTS

Size: 76-81, 86-91, 97-102cm

Finished fit: 86, 95.5, 104.5cm

Garment length: 58.5cm

Sleeve length: 48cm

TENSION

1 motif measures 9.5cm, on a
4.50mm hook

WORKING PATTERN

CROCHET MOTIF CARDIGAN FRONTS AND BACK

(Worked in one piece to armhole)

FIRST MOTIF

Using 4.50mm hook, make 4 ch, sl st
to form a ring.

Round 1: 1 ch, 6 dc into ring, sl st
into first dc.

Round 2: 2 ch and 1 dc into same
place, 2 dc into each of next 5 dc, sl
st to 2nd of 2 ch.

Round 3: 3 ch, work 2 tr into same
place leaving last loop of each tr
on hook, yoh and draw through all
loops, * 3 ch, make 3 tr into next dc
leaving last loop of each tr on hook,
yoh and draw through all loops, rept
from * 10 times more, 3 ch, sl st
into 3rd of 3 ch.

Round 4: Sl st into 3 ch sp, 1 ch, 1
dc into same place, * (5 ch, 1 dc into
next 3 ch sp) twice, 7 ch, 1 sl st into
4th ch from hook (picot formed), 3
ch, 1 dc into next sp, rept from * to
end, omitting 1 dc at end of last rept,
1 sl st into 1st dc. Fasten off. ▶





Crochet Motif Cardigan continued.

SECOND MOTIF

Work as for 1st Motif until 3rd round is complete.

Round 4: Sl st to 3 ch sp, 1 ch, 1 dc into same place, (5 ch, 1 dc into next 3 ch sp) twice, 3 ch, 1 dc into any picot on 1st Motif, 3 ch, 1 dc into next sp on 2nd Motif, (2 ch, 1 dc into next 5 ch sp on 1st Motif, 2 ch, 1 dc into next sp on 2nd Motif) twice, 3 ch, 1 dc into next picot on 1st Motif, 3 ch, 1 dc into next sp on 2nd Motif. Complete as 4th Round of 1st Motif from * Fasten off.

Continue making and joining motifs as instructions given for 2nd Motif until 9 (10, 11) motifs have been joined to form 1st row.

Commence 2nd row of motifs.

THIRD MOTIF

Work a motif as instructions given for 2nd motif joining it to the top of the 1st Motif as illustrated in the same manner as 1st and 2nd motifs were joined at side edge.

FOURTH MOTIF

Work as for 1st Motif until 3rd round is complete.

Round 4: Sl st to 3 ch sp, 1 ch, 1 dc into same place, (5 ch, 1 dc into next 3 ch sp) twice, 3 ch, 1 dc into corner picot A of diagram, 3 ch, 1 dc into next sp on 4th Motif, * (2 ch, 1 dc into next 5 ch sp on 2nd Motif, 2 ch, 1 dc into next sp on 4th Motif) twice, 3 ch, 1 dc into corner picot B, 3 ch, 1 dc into next sp on 4th Motif, rept from * once more, working into 3rd Motif instead of 2nd Motif, and working into corner picot C instead of B.

Complete motif as 4th Round of 1st Motif from.* Fasten off.

Continue to make and join motifs as diagram, leaving the two top front motifs until last and joining to corresponding Back motif to form shoulders as follows:

Round 4: Sl st to 3 ch sp, 1 ch, 1 dc into same place, (5 ch, 1 dc into next 3 ch sp) twice, * 3 ch, 1 dc into picot of front motif below, 3 ch, 1 dc into next sp on working motif, (2 ch, 1 dc into next 5 ch sp on front motif below, 2 ch, 1 dc into next sp on working motif) twice, 3 ch, 1 dc in next picot on front motif below, 3 ch, 1 dc in next sp on working motif, * (5 ch, 1 dc in next ch sp on working motif) twice, rept from * to * once more, working into Back motif instead of Front motif below.

Complete as for 1st Motif. Fasten off. Rept for other shoulder.

CORNER INSERTS (MAKE 2)

With RS facing, using 4.50mm hook, rejoin yarn to 5 ch sp before corner picot as shown on diagram, 3 ch, 1 dtr into picot, 3 ch, 1 dc into next 5 ch sp. Fasten off.

SLEEVES (BOTH ALIKE)

Using 4.50mm hook, work motifs as given for Fronts and Back and join together as shown in Sleeve diagram, commencing at top row.

Attach sleeve to armhole opening on 4th rounds of motifs on the 1st row. On rows 3 and 4, join last motif made to 1st of row as before to form sleeve shape.

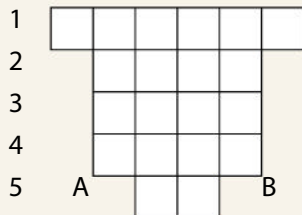
SLEEVE CUFF MOTIF

Using 4.50mm hook, work as instructions given for 1st Motif for Fronts and Back until Round 3 is complete.

With RS facing, attach motif to cuff as follows:

Round 4: Sl st to 3 ch sp, 1 dc into same sp, 1 ch, 1 dc into centre of 2 underarm picots on row 4 (A and B), 1 ch, 1 dc into next 3 ch sp of cuff motif, (2 ch, 1 dc into next 5 ch sp on row 4, 2 ch, 1 dc into next 3 ch sp on Cuff Motif) twice, 3 ch 1 dc

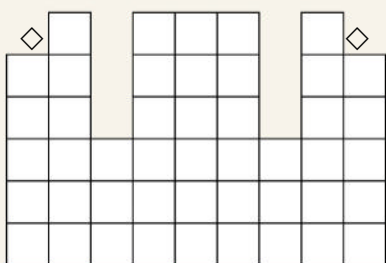
Sleeve - all sizes (20 motifs)



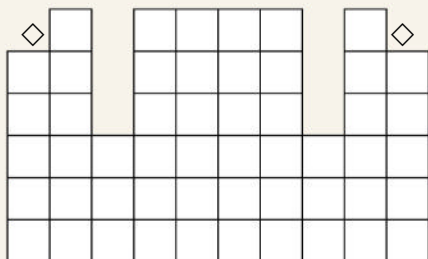
KEY

◇ Corner Insert

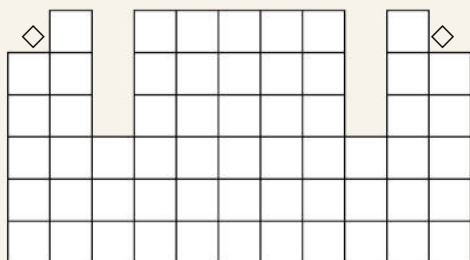
Size 76/81cm, 30/32ins. (46 motifs)



Size 86/91cm, 34/36ins. (52 motifs)



Size 97/102cm, 38/40ins. (58 motifs)



into corner picot on row 4, 3 ch, 1 dc into next 3 ch sp on Cuff Motif, *(1 ch, 1 dc into next 5 ch sp on row 5, 1 ch, 1 dc into next 3 ch sp on Cuff Motif) twice, *1 ch, 1 dc into bottom corner picot of row 5 motif, 5 ch, 1 dc into bottom corner picot of 2nd Motif on row 5, 1 ch, 1 dc into next 3 ch sp on Cuff Motif, rept from * to * 1 ch, 1 dc into corner picot of row 4, 1 ch, 1 dc into next 3 ch sp on Cuff Motif, (2 ch, 1 dc into next 5 ch sp on Row 4, 2 ch, 1 dc into next 3 ch sp on Cuff Motif) 2 ch, 1 dc into next 5 ch sp on row 4, 2 ch, 1 sl st into top of first dc on cuff motif. Fasten off.

SLEEVE UNDERARM MOTIF

Sew together motifs at underarm at picots and 5 ch sps, attaching half the ends of row 1 to underarm of jacket and the other half to each other to form top of sleeve seam.

Work motif as instructions given for 1st Motif for Fronts and Back until round 3 is complete, then attach to underarm space of Sleeve at row 2 on round 4 as for Fronts and Back, making 3 ch, 1 dc 3 ch to and from all picots, and 2 ch, 1 dc, 2 ch to and from all 5 ch sps, sl st to 1st dc. Fasten off.

CUFF EDGINGS

Using 4.00mm hook and with right side facing, join yarn at seam.

Round 1: 4 dc into 5 ch sp on Cuff Motif, 1 dc into next picot, 2 dc into 3 ch sp, 1 dc in next dc (3 dc into 5 ch sp, 1 dc in next dc) twice, 2 dc into 3 ch sp, 1 dc into next picot, 2 dc into 3 ch sp, 1 dc into next dc, (3 dc into 5 ch sp, 1 dc in next dc) twice, 2 dc in 3 ch sp, 1 dc into picot, sl st to first dc. Do not turn.

Round 2: 1 ch, 1 dc into same place, * miss 1 st, 5 tr in next st, miss 1 st, 1 dc into next st, rept from * to end, omitting last dc, sl st into first dc. Fasten off.

FRONT EDGINGS

Using 4.00mm hook with RS facing, rejoin yarn at bottom picot on Right Front edge.

Row 1: 1 ch, 1 dc into picot, * 2 dc into 3 ch sp, 1 dc in next dc, (2 dc into 5 ch sp, 1 dc in next dc) twice, 2 dc in 3 ch sp, 1 dc into picot *.

Rept from * to * finishing at top of Right Front before neck shaping, 2 dc into same corner picot, 2 dc into 3 ch sp, 1 dc into next dc, 2 dc into 5 ch sp, 1 dc into next dc 2 dc into next 5 ch sp, 2 dc into 3 ch at corner insert of Right Front Neck Shaping, 1 dc into dtr, 2 dc into 3 ch of corner insert, (2 dc into 5 ch sp, 1 dc into next dc) twice, 2 dc into 3 ch sp, 1 dc into picot, rept from * to * 1 (2, 3) times more, 2 dc into 3 ch sp, 1 dc into next dc, 2 dc into 5 ch sp, 1 dc in next dc, 2 dc into 5 ch sp, 2 dc into 3 ch of corner insert, 1 dc in dtr, 2 dc into 3 ch of corner insert, (2 dc into 5 ch sp, 1 dc in next dc) twice, 2 dc into 3 ch sp, 3 dc all into corner picot, rept from * to * to bottom of Left Front, make 2 dc into same corner picot, rept from * to * along bottom of jacket to Right Front corner, making 2 more dc into same picot. Do not turn.

Row 2: Work scallops as instructions given for cuffs to top of Right Front, finishing with 1 dc into first of 3 corner dc, work buttonloop as follows:- 5 (8, 11) ch, sl st into next dc, 1 dc into next dc.

Continue making scallops until top of Left Front is reached, finishing with 1 dc into 1st of 3 corner dc, make 1 scallop of 5 tr into 2nd dc, 1 dc into 3rd dc.

Continue making scallops down left front and along lower edges until bottom right front is reached, making 1 scallop into 2nd corner dc of bottom Left Front and finishing with 1 scallop in corner dc of bottom Right Front, sl st to first dc.

Fasten off.

MAKING UP

Sew on button. Make a button loop on neck edge of right front to correspond.

Wentworth Distributors NZ Ltd

Free phone AU: 1800 150 542

Free phone NZ: 0800 738 998



www.naturallyyarnsnz.com

HANDMADE HOME

*Handmade with love in
Patons Cotton Blend 8 ply*



This pattern and more are available in Handmade Home book 358

Phone 1800 337 032 for your nearest stockist or visit
patonsyarns.com.au  [/auspinners](https://www.facebook.com/auspinners)  [/auspinners](https://www.instagram.com/auspinners)

