

# Simply Knitting

THE UK'S BEST-SELLING  
KNITTING MAGAZINE



Parrot fashion!

ISSUE 255

INSPIRATION \* ADVICE \* LATEST BUYS \*

## NEW SEASON KNITS!

**486**  
Fab patterns  
& ideas  
inside



Modern  
Tartan



Halloween  
Hoodie



Fabulous  
Fair Isle



**WIN!**  
A BUMPER  
CYGNET YARNS  
PRIZE!  
Worth over  
**£500!**

UK only. T&Cs apply

Christmas Calendar  
Blanket Knit-Along



part  
one

GARMENTS  
IN SIZES  
4-38

ROWAN  
EST 1978

PLUS: YOUR KNITS • EXPERT Q&A • LEND A HAND • SHOPPING IDEAS

WEST YORKSHIRE SPINNERS

# Yuletide



Capture the magic of the festive season  
with classic Christmas colours and  
a touch of glistening sparkle.

Discover your local stockist at [wyspinners.com](http://wyspinners.com)



01535 664500

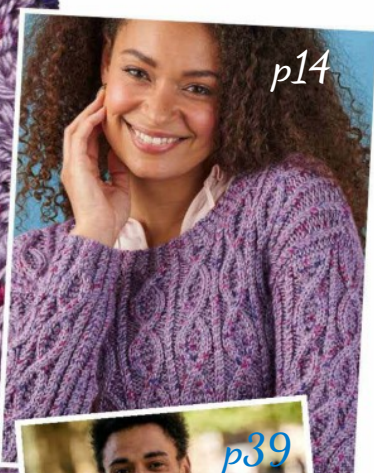




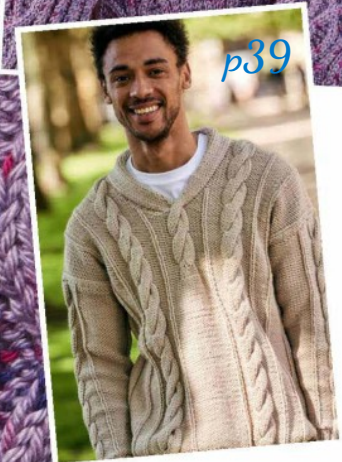
Kirstie McLeod,  
Editor

# Hello

Welcome to our cosy knitting corner where each project tells a story of creativity...



Our second autumn issue delivers projects to inspire your needles through the cooler months. First our **classic cable jumper** offers timeless elegance, while the **monster jumper** brings Halloween fun for kids. We are especially excited to introduce the first part of our **Christmas blanket knit-along, 'Count the Days,'** a project that promises to become a cherished holiday tradition. For the men in your life, our **shawl-collared jumper** provides a stylish and warm option. Add a pop of colour to your home with the vibrant **macaw hoop wall hanging**, and embrace heritage style with a modern twist with our **tartan jumper pattern**. Whether you are knitting gifts or crafting for yourself, we hope we bring you beautiful patterns filled with joy!



## The SK Team x

Kirstie, Sophie, Nicola,  
Camilla, Jennifer and Cory



### GET IN TOUCH *We'd love to hear from you!*

- Write to us at Stay in Touch, *Simply Knitting* magazine, Our Media, Eagle House, Bristol BS1 4ST
- Find us on Instagram @simplyknittingmag
- Find us on Facebook Facebook.com/simplyknitting
- Email us at simplyknitting@ourmedia.co.uk (editorial queries only)
- Subscribers visit our website www.ourmediashop.com/contact-us

Turn to page 36 to SUBSCRIBE TODAY!

# Simply Knitting

In this issue

Knit Shaun the Sheep with  
our Book of the Month  
on page 21



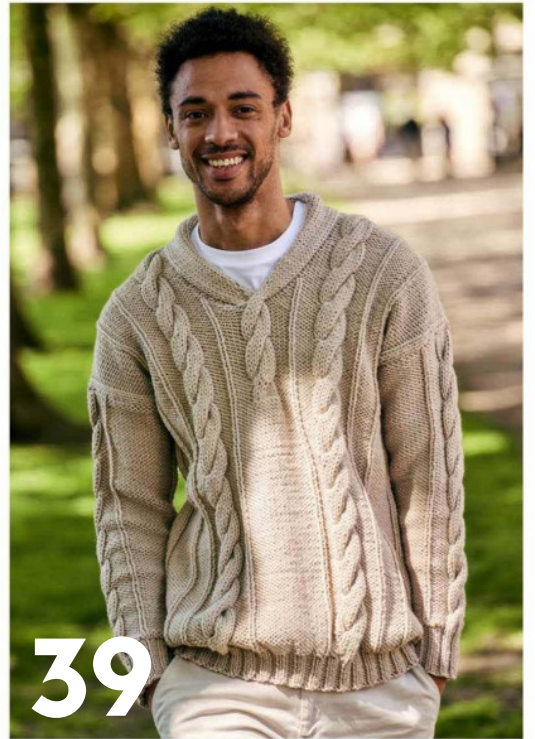
14



53



COVER  
STAR!



39



73



## PATTERNS

- 14 Tweed cable jumper
- 25 Stylecraft accessories set
- 31 Kids' monster jumper
- 39 Men's shawl-collar jumper
- 43 Cable hot water bottle
- 44 Christmas blanket KAL (pt1)
- 53 Rowan colourwork cardigan
- 59 Kids' apple jumper
- 67 Macaw wall hanging
- 73 Modern tartan jumper
- 82 Collar with bow

## GREAT BUYS & FUN PUZZLES

- 9 **Wishlist**  
All the best shopping for knitters, from nutcracker kits and simple natural knits to the latest yarns from Caron
- 52 **Latest yarns reviewed**  
Enjoy our selection of soft to the touch yarns as we bring you the very best of brand new buys on the market
- 63 **Just for fun**  
Take time out from knitting with quizzes with our themed crossword and mind-bending sudoku puzzles

## GOOD READS & MUCH MORE

- 7 **Our gifts to you this month**  
The best treats, offers and exclusives
- 21 **Book of the month**  
The latest good knitting read!
- 22 **Stay in touch**  
We celebrate your knitting successes
- 28 **The big prize draw**  
Win of over 100 yarns, worth over £500, from top yarn brand Cygnet Yarns
- 36 **Subscribe today**  
Check out our latest fantastic offer and bag yourself a great deal!
- 43 **Lend a hand**  
Fun and fulfilment through fund-raising, plus a copyright-free pattern to knit
- 64 **Ask the experts**  
Our knitting expert tackle all your questions, big and small
- 78 **How to knit**  
Learn to knit and finish your projects with our expert advice
- 80 **What's in the next issue...**  
From family knits and classic garments to something for the home

## 82 **Stitch of the month**

Use your knitting skills to create a cool Peter Pan collar to dress up your plain T-shirts, tops and blouses!

## 85 **Back issues**

Did you miss an issue? Find the magazine you're looking for with our recent issues' library – it's brimming with inspiration!

★ ★ THE BIG PRIZE DRAW



WIN

HUGE CYGNET  
YARN PRIZE!



WORTH OVER  
£500

Turn to page 28 to enter today

# CASCADE YARNS®

FAMILY OWNED SINCE 1987

## THREE SEASONS TOPPER

BY CHERYL MURRAY  
FREE PATTERN DK739



75% WOOL  
25% NYLON



[www.cascadeyarns.com](http://www.cascadeyarns.com)



# OUR GIFTS TO YOU THIS MONTH!

## Pretty fairies and fairy house pattern book

In this issue of *Simply Knitting* magazine, we're thrilled to share a brilliantly unique gift to elevate your knitting mojo! Our charming extra pattern book is filled with enchanting designs by knitting genius, Sachiyo Ishii. It includes a fairy house pattern, four adorable fairy patterns, and flower patterns too. These captivating creations are sure to add a touch of magic to your knitting journey this month, not to mention make great gifts for your loved ones.



**THIS ISSUE'S UNMISSABLE TREATS!**

only in

**Simply Knitting**

- ♥ **FAIRY HOUSE AND FAIRIES**  
Charming extra pattern collection
- ♥ **WIN A FAB CYGNET PRIZE**  
Over 100 balls of great yarn!
- ♥ **MONSTROUS KIDS' JUMPER**  
Jane Burns' Halloween hoodie
- ♥ **EXCLUSIVE ROWAN KNIT**  
Gorgeous colourwork cardigan
- ♥ **EXCLUSIVE STYLECRAFT KNIT**  
Autumn-ready accessories set
- ♥ **SHAUN THE SHEEP INSPO**  
Our brand new book review
- ♥ **PLUS FREE PATTERNS**  
Online at [www.gathered.how](http://www.gathered.how)



**WHAT'S INSIDE YOUR FAIRY PATTERN BOOK**



EXCLUSIVE TO Simply Knitting



INCLUDES FLOWER KNITS!

5 lovely DESIGNS!

## IT'S A CHRISTMAS BONANZA NEXT ISSUE!

### Christmas knits extra pattern book

Celebrate the holiday season with our special gift! Inside our extra pattern book featuring delightful Christmas knitting patterns you'll find festive homewares, decorations and more, with plenty of inspiration for your holiday projects.



### + Christmas tree ornament patterns

Enjoy our extra collection of vintage-style tree decoration patterns next issue. They are super cute, easy to make and perfect for festive décor, or as a handmade gift for family and friends. Get creative and spread holiday cheer this 2024. Happy Christmas knitting!



DON'T MISS THIS!

CONTENTS SUBJECT TO CHANGE

Save the date!

**ISSUE 256 OF SIMPLY KNITTING ON SALE THURSDAY 3 OCTOBER**

**CARON**<sup>®</sup>  
SIMPLY  
SOFT<sup>®</sup>



**50 COLOURS | 100% ACRYLIC | ARAN WEIGHT**

**NOW AVAILABLE FROM  
WOOL WAREHOUSE | READICUT**



# Wishlist



Shopping ♥ Events ♥ Inspiration ♥ People ♥ Views

## AUTUMN NEON

Sirdar have created an eye-catching six-pattern collection in two-tone neon yarn from their Hayfield Bonus DK range. It's the perfect way to mix traditional skills with contemporary colour!  
[www.sirdar.com](http://www.sirdar.com)



Simply  
**Knitting**  
Loves

More  
on p12



## What I'm loving...

...practical ball winders, neon-pop sleep sacks, colourful sock yarn, gorgeous variegated DK yarn and handy books!

### Bernat Rainbow Snuggle Sack Pattern

Squishy Bernat Blanket Brights Super Chunky yarn knits up into this wonderful Snuggle Sack pattern. Make it in your little's favourite colour for a cosy hideaway designed to fit kids 4 to 10 years.

Find the free pattern at [www.readicut.co.uk/collections/bernat-rainbow-swirl-knit-snuggle-sack](http://www.readicut.co.uk/collections/bernat-rainbow-swirl-knit-snuggle-sack), yarn £11.99 for 300g



### Clover Ball Winder

Wind skeins smoothly and efficiently with Clover's Ball Winder. Its 'floating' technology prevents the yarn guide from touching the surface it's clamped onto, preventing scratches.

Available nationwide from all good craft shops. For stockist information, email Clover at [clover@stockistenquiries.co.uk](mailto:clover@stockistenquiries.co.uk)



### Yarnsmiths Full of Beans DK Yarn

Available in an array of shades, from bold primaries to subtle pastels. Full of Beans DK yarn offers endless possibilities to create eye-catching patterns and designs. £4.40 for 100g, [www.woolwarehouse.co.uk](http://www.woolwarehouse.co.uk)

Great shades



Super versatile yarn!

### Stylecraft Head Over Heels Australia Yarn

Stylecraft and Stuart Hillard have embarked on an antipodean adventure with Head over Heels Australia 4ply yarn. The curated shades are a celebration of everything Australian! £6.50 for 100g, [www.stylecraft-yarns.co.uk](http://www.stylecraft-yarns.co.uk)



### The Knitter's Handbook

With over 90 stitches and patterns explained, this indispensable knitting guide is guaranteed to inspire your next project and help you complete it to perfection. £22, available from good bookshops and online

## HAVE A CRACKING CHRISTMAS!

It's never too early to start knitting for Christmas, and we're sure these gorgeous festive knit kit (from £16.99) will soon have you on your way! Wool Couture's Nutcracker Collection comes with patterns for sweet, squishy toys or ornaments, Christmas tree decorations, including a stocking, tree and heart, each decorated with fine gold thread. You'll also find a plush mini cushion with a nutcracker doll's face, complete with impressive moustache and beard. This range has been designed in a modern combination of colours, from smart red and blue to pure ivory and fine gold trim. [www.woolcouturecompany.com](http://www.woolcouturecompany.com)



# Knit a mini farmyard

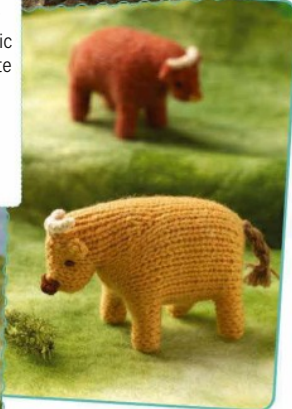
**Top  
stash  
buster**

Create the tiniest farm we've ever seen with this fun-filled new book by Sachiyo Ishii...



Knit 20 tiny, adorable farmyard favourites, from cheeky piglets and bustling chickens to a loyal sheepdog and your very own scarecrow. This endearing collection from best-selling knitting author Sachiyo Ishii is a great source of playful patterns, perfect for presents or playthings, and is a fantastic way to use up your yarn stash. Complete with step-by-step sewing up, stuffing and embroidery techniques, these 20 fun, simple patterns are ideal for knitters of all skill levels.

Paperback £8.99, Search Press



*What's new from King Cole?*

## HEDGEROW CHUNKY!

Experience the captivating allure of the English countryside with Hedgerow Chunky, King Cole's latest multi-coloured acrylic yarn in generous 200g balls. Each ball embodies the spirit of picturesque hedgerows, combining lively shades of blooming flowers, lush greens and warm earth tones. Ideal for snug blankets, fashionable sweaters and delightful accessories, Hedgerow Chunky features a plush, chunky texture that is easy and quick to work with. Capture the countryside's magnificence with every stitch of Hedgerow Chunky.

£8.10 for 200g, [www.kingcole.com](http://www.kingcole.com)



**Quick  
to knit  
colour**

**YARN  
OF THE  
MONTH**

## CARON COLORAMA HALO

Subtle colour shifts and a soft-touch finish delight you with this brand new yarn



No matter where you are on your crafting journey, whether you have years of experience or are just beginning your knitting hobby, Caron Colorama Halo could be the perfect yarn for you! This bulky-weight, acrylic yarn is self-striping so that you can easily create beautiful fashion pieces and home accessories. With its luxuriously soft and textured feel, the possibilities are simply endless!

£13.29 for 227g,

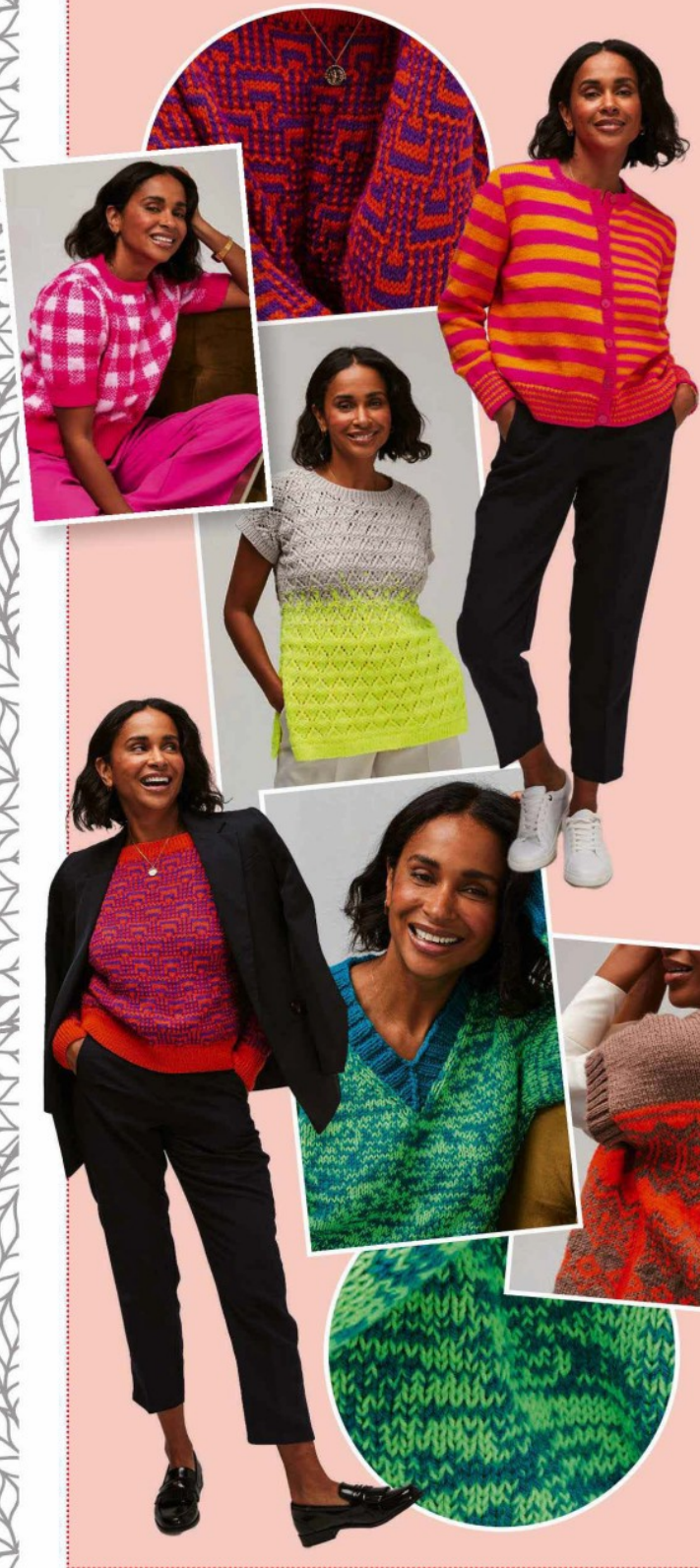
[www.creativecraftingworld.co.uk](http://www.creativecraftingworld.co.uk)



Modern  
colour  
work!

## Nice and neon

Boost your everyday wardrobe with a splash of colour that can't be missed! Sirdar's two-tone neon pattern collection merges pairs of shades, one muted, one bright, to create the ultimate modern-classical garments. A loose-fit tank top, neat T-shirt, funky tunic, striped cardigan and V-neck and crew-neck jumpers round up this stunning selection of great knits. Knit them all in budget friendly Hayfield Bonus DK (yarn £3 for 100g, (printed patterns £11.95). For stockists contact [www.sirdar.com](http://www.sirdar.com) or call 01924 371501



## Cosy like Bambi...

Make the ultimate, warm blanket for your favourite little people

Enjoy the softness of a blanket designed for expert snuggling! West Yorkshire Spinners Bambi Blanket Kit contains all the yarn you need plus an easy-to-follow pattern. Designed in West Yorkshire Spinners Bo Peep DK, a lightweight blend of Falklands Islands Wool, this wonderful blanket is guaranteed to please whoever gets lucky enough to use it. Kit £38.75, [www.wyspinners.com](http://www.wyspinners.com)



## SIMPLY NATURAL

New book 'Simply Natural Knits,' by Karen Miller and Susan Ritchie of Mrs Moon, showcases the authors' years of experience, and proves how effortlessly one can knit stylish and relaxed garments, accessories and home decor items. Inside the book you'll find numerous projects for you, your home, and your family, including a cosy Sloppy Joe sweater that's sure to become a beloved wardrobe essential, a brioche scarf featuring a wonderfully easy stitch pattern, and a zigzag-stripe throw in luscious colours. You'll also find a textured bolster, an adorably floppy bunny, and a charming baby beanie. Regardless of your knitting skill level, 'Simple Natural Knits' has got you covered. £14.99, available from good book shops and online



for the **LOVE** of

# STRIPES

Vibrant colours emerge  
as you knit



Scan here for **all**  
our latest patterns

  
**Stylecraft**  
Member of the UK Hand Knitting Association

For all our latest patterns & yarns visit [www.stylecraft-yarns.co.uk](http://www.stylecraft-yarns.co.uk)    For your nearest stockist telephone 01484 848435

# HEATHER TWIST

Celebrate the start of a new season with a classic cable jumper in the prettiest tweed-effect yarn. By **Siân Brown**



Simply  
**Knitting**  
Loves



EXCLUSIVE TO  
Simply  
**Knitting**  
EXCLUSIVE TO

# \* CABLE JUMPER



## TAKE ON A CHALLENGE

### YOU WILL NEED

- Caron Simply Soft Speckle Aran (100% acrylic, 141g/215m)

For yarn quantities and measurements see size table

- A 4mm circular needle, 80-100cm long
- A 5mm circular needle, 80-100cm long
- Cable needle
- Stitch holder

### TENSION

22 sts and 24 rows to 10cm (4in) square over pattern (cable and cable rib) on 5mm needles

### ABBREVIATIONS

- T3B** Place next st on a cable needle and hold at back of work, K2, then P1 from cable needle
- T3F** Place next 2 sts on a cable needle and hold at front of work,

- P1, then K2 from cable needle
- C3B** Place next st on a cable needle and hold at back of work, K2, then K1 from cable needle
- C3F** Place next 2 sts on a cable needle and hold at front of work, K1, then K2 from cable needle
- C2B** Place next st on a cable needle and hold at back of work, K1, then K1 from cable needle
- C4B** Place next 2 sts on a cable needle and hold at back of work, K2, then K2 from cable needle

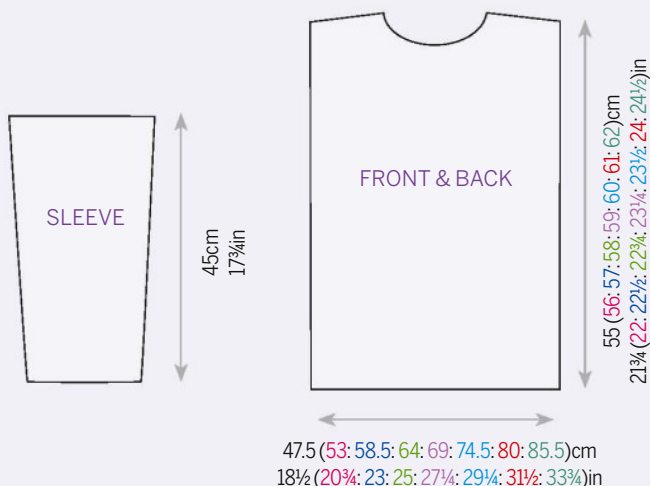
For a full list see page 79

### WHERE TO BUY

- For yarn stockists contact Readicut on 0116 2713759 or [www.readicut.co.uk](http://www.readicut.co.uk)

### OR YOU COULD TRY...

- Wool Warehouse 0800 505 3300 or [www.woolwarehouse.co.uk](http://www.woolwarehouse.co.uk)
- The Little Wool Shop Rugeley 01889 570 500 or [www.thelittlewoolshop.co.uk](http://www.thelittlewoolshop.co.uk)



## CABLE JUMPER CHART (WRITTEN INSTRUCTIONS)

- Row 1 (RS)** P3, C4B, P3, C2B.
- Row 2 (WS)** P2, K3, P4, K3.
- Row 3** P2, C3B, C3F, P2, C2B.
- Row 4** (P2, K2) 3 times.
- Row 5** P1, C3B, K2, C3F, P1, C2B.
- Row 6** P2, K1, P2, K4, P2, K1.
- Row 7** P1, K8, P1, C2B.
- Rows 8 and 9** As Rows 6 and 7.
- Row 10** As Row 6.
- Row 11** P1, T3F, K2, T3B, P1, C2B.
- Row 12** As Row 4.
- Row 13** P2, T3F, T3B, P2, C2B.
- Row 14** As Row 2.

These 14 rows form the Cable panel and are repeated throughout.

### BACK

Cast on 106 (118: 130: 142: 154: 166: 178: 190) sts using 4mm needles.

**Rib row 1** (P2, K2) 3 times, \*P3, K4, P3, K2; rep from \* to last 10 sts, P2, (K2, P2) twice.

**Rib row 2** (K2, P2) twice, K2, \*P2, K3, P4, K3; rep from \* to last 12 sts, (P2, K2) 3 times.

**Rib row 3** (P2, C2B) 3 times, \*P3, C4B, P3, C2B; rep from \* to last 10 sts, P2, (C2B, P2) twice.

**Rib row 4** As Rib Row 2.

**Rib row 5** (P2, C2B) 3 times, \*P3, K4, P3, C2B; rep from \* to last 10





**FIND YOUR SIZE**

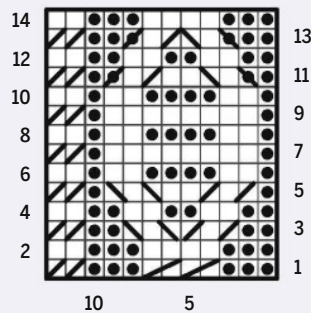
SIZE		8-10	12-14	16-18	20-22	24-26	28-30	32-34	36-38
TO FIT BUST	cm	82-86	92-97	102-107	112-117	122-127	132-137	142-147	152-157
	in	32-34	36-38	40-42	44-46	48-50	52-54	56-58	60-62
ACTUAL BUST	cm	94.5	105.5	116.5	127.5	138	149	160	171
	in	37¼	41½	45¾	50¾	54¾	58¾	63	67¼
LENGTH	cm	55	56	57	58	59	60	61	62
	in	21¾	22	22½	22¾	23¾	23½	24	24½
SLEEVE LENGTH	cm	45	45	45	45	45	45	45	45
	in	17¾	17¾	17¾	17¾	17¾	17¾	17¾	17¾
YARN		Caron Simply Soft Speckle Aran (141g/215m)							
Snapdragon (61015)		5	5	6	7	7	8	8	9

**SIZING COLOUR KEY** So you can re-use this pattern, we've colour-coded the sizing instructions. Simply follow our colour-coded measurements and you're off

**HOW TO USE OUR CHARTS**

Start at the bottom right-hand corner. Read right side rows from right to left and wrong side rows from left to right. A row of squares represents a row of knitting.

**CHART**



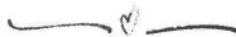
**KEY**

- K on RS; P on WS
- P on RS; K on WS
- C4B
- C2B
- C3B
- C3F
- T3F
- T3B



*"In sizes 8 to 38, this is a knit for everyone, and the cabling creates such a flattering fit. Caron Simply Soft comes in nine tweedy shades, so pick your favourite!"*

KIRSTIE MCLEOD, EDITOR



sts, P2, (C2B, P2) twice.  
**Rib row 6** As Rib Row 2.  
**Rib rows 7 to 10** As rib rows 3 to 6.

Change to 5mm needles.

**SET CHART PANEL**

**Row 1 (RS)** (P2, C2B) 3 times, \*work Row 1 of Chart; rep from \* to last 10 sts, P2, (C2B, P2) twice.  
**Row 2 (WS)** (K2, P2) twice, K2, \*work Row 2 of Chart; rep from \* to last 12 sts, (P2, K2) 3 times.

**STEP-BY-STEP SKPO SLIP 1, KNIT 1, PASS SLIPPED STITCH OVER**



**1** Insert the point of the right-hand needle into the next stitch as if to knit, but instead slip the stitch on to the right-hand needle.



**2** Knit the next stitch as normal.



**3** Insert the point of the left-hand needle into the slipped stitch on the right-hand needle and lift it over the knitted stitch.



**4** Continue knitting as directed in the pattern. This decrease forms a slant that slopes towards the left.



These 2 rows set the Chart panels with rib either side. Work in patt as set, working Rows 3 to 14 of Chart, and then repeating Rows 1 to 14 of Chart until Back measures 55 (56: 57: 58: 59: 60: 61: 62)cm from cast-on edge, ending after a WS row.

### SHAPE SHOULDERS

**Cast off** 6 (7: 8: 9: 10: 11: 12: 13) sts at beg of next 10 rows.

**Cast off** rem 46 (48: 50: 52: 54: 56: 58: 60) sts.

### FRONT

Work as given for Back until Front measures 47 (48: 49: 50: 51: 52: 53: 54)cm from cast-on edge, ending after a WS row.

### SHAPE LEFT NECK

**Next row** (RS) Patt 37 (42: 47: 52: 57: 62: 67: 72) sts, skpo, turn and work on these 38 (43: 48: 53: 58: 63: 68: 73) sts for first side of neck.

**Next row** (WS) P2togtbl, patt to end. [1 st dec'd]

**Next row** Patt to last 2 sts, skpo. [1 st dec'd]

Rep the last 2 rows another 3 times.

[30 (35: 40: 45: 50: 55: 60: 65) sts]

Work straight until Front measures the same as Back to shoulder shaping, ending at armhole edge.

### SHAPE LEFT SHOULDER

**Cast off** 6 (7: 8: 9: 10: 11: 12: 13) sts at beg of next row and 3 foll RS rows. [6 (7: 8: 9: 10: 11: 12: 13) sts]

Patt 1 row.

**Cast off** rem sts.

With RS facing place centre 28 (30: 32: 34: 36: 38: 40: 42) sts on a holder, rejoin yarn to rem sts, k2tog, patt to end.

[38 (43: 48: 53: 58: 63: 68: 73) sts]

**Next row** (WS) Patt to last 2 sts, p2tog. [1 st dec'd]

**Next row** (RS) K2tog, patt to end. [1 st dec'd]

Rep the last 2 rows another 3 times.

[30 (35: 40: 45: 50: 55: 60: 65) sts]

Work straight until Front measures the same as Back to shoulder shaping, ending at armhole edge.

### SHAPE RIGHT SHOULDER

**Cast off** 6 (7: 8: 9: 10: 11: 12: 13) sts at beg of next row and 3 foll WS rows. [6 (7: 8: 9: 10: 11: 12: 13) sts]

Patt 1 row.

**Cast off** rem sts.

### SLEEVES

**Cast on** 58 (58: 70: 70: 82: 82: 94: 94) sts using 4mm needles.

Work 10 rows of Rib as for Back.

Change to 5mm needles.

### SET CHART

**Row 1** (RS) (P2, C2B) 3 times, \*work Row 1 of Chart; rep from \* to last 10 sts, P2, (C2B, P2) twice.

**Row 2** (WS) (K2, P2) twice, K2, \*work Row 2 of Chart; rep from \* to last 12 sts, (P2, K2) 3 times.

These 2 rows set the Chart panels with rib either side.

Work 2 more rows, working Rows 3 and 4 of Chart.

Cont working Chart as set, working Rows 5 to 14, then repeating Rows 1 to 14, AT THE SAME TIME inc 1 st at each end of the next row and 11 foll 8th rows. [82 (82: 94: 94: 106: 106: 118: 118) sts]

Cont straight until Sleeve measures 45cm from cast-on edge, ending with a WS row.

**SHAPE SLEEVE TOP**

Cast off 6 sts at beg of next 10 (10: 12: 12: 14: 14: 16: 16) rows. [22 sts].

Cast off.

**NECKBAND**

Join right shoulder seam.

With RS facing, using 5mm needles, pick up and K24 sts down left side of front neck, K28 (30: 32: 34: 36: 38: 40: 42) sts from front neck holder, pick up and K24 sts up right side of front neck, pick up and K46 (48: 50: 52: 54: 56: 58: 60) sts from back neck edge. [122 (126: 130: 134: 138: 142: 146: 150) sts]

Rib row 1 K2, (P2, K2) to end.

Rib row 2 P2, (C2B, P2) to end.

Rep last 2 rows once more.

Change to 4mm needles.

Cont in rib as set for 3 more rows.

Cast off in patt.

**MAKING UP**

Join the left shoulder and neckband seam. Sew on the Sleeves. Join side and Sleeve seams. Block gently, following any yarn care instructions on the ball band.



**GET THE LOOK!** Team your knit with the latest trends

The simple lines of this tailored coat pulls everything together  
**Cotton Traders £65**

Add a floaty touch to your outfit with this short-sleeved frilly top  
**F&F £14**

Relaxed fit mom jeans for the win in classic faded blue denim  
**New Look £29.99**

A light checked scarf will keep you cosy in style  
**Oliver Bonas £35**

These low-heel buckle boots will see you through the season  
**F&F £25**

Stylecraft Easy Fair Isle Effect Aran



£4.89  
per 100g ball

100% Acrylic

Baa Ram Ewe Woodnote Aran



£12.90  
per 100g ball

100% Wool

West Yorkshire Spinners Colour Lab Sock DK



£10.99  
per 100g ball

75% Wool, 25% Nylon

Yarnsmiths Full of Beans DK



£4.40  
per 100g ball

100% Acrylic

Caron Macchiato Cakes Chunky



£12.49  
per 227g ball

80% Acrylic, 20% Wool

Get  
**10%**  
OFF EVERYTHING!  
Discount code:  
**SK255**

**FREE DELIVERY**  
on orders  
over £30



Order online: [www.woolwarehouse.co.uk](http://www.woolwarehouse.co.uk)  
Phone us: 01926 882818 or 0800 505 3300  
Email us: [hello@woolwarehouse.co.uk](mailto:hello@woolwarehouse.co.uk)

No minimum order. FREE delivery on UK orders over £30. £3.50 delivery charge for UK orders under £30.  
\* Discount code not valid on yarn packs, sale items or KC Collection products.



SEE THE ALL NEW YARNSMITHS YARN ON OUR WEBSITE:  
[www.yarnsmiths.co.uk](http://www.yarnsmiths.co.uk)



# Book of the month



**AARDMAN™**

Aardman, Shaun the Sheep and Shaun's image are trade marks of Aardman Animations Limited 2024. All rights reserved.



Dive into fleecy fun with this exciting Shaun the Sheep pattern book!

Renowned designer and author Sachiyo Ishii invites knitters to bring the beloved world of Shaun the Sheep to life in her latest release, 'Shaun the Sheep: Baa'rilliant Knits', hitting shelves in August 2024. Shaun the Sheep, first captured hearts in the 1995 Wallace & Gromit film 'A Close Shave.' Now a global superstar with fans in 170 countries, Shaun is making his knitting debut with this charming collection featuring patterns for Shaun and nine of his friends.

### The gang's all here

Designed for confident knitters, 'Shaun the Sheep: Baa'rilliant Knits' offers two delightful versions of Shaun: one with a Santa hat and paper chain from 'Shaun the Sheep: The Flight Before Christmas,' and another with a baker's hat and pizza from the Series 6 episode 'Baa-gherita.' Joining Shaun in this woolly adventure are Timmy and Timmy's Mum, Shirley (the fluffiest member of the gang), the mischievous Twins, The Farmer and his loyal canine sidekick Bitzer, a Naughty Pig, Mower Mouth (the voracious goat), and Raul, one of the notorious llamas from 'Shaun the Sheep: The Farmer's Llamas' special.

### Knitting for the fans

Sachiyo provides essential techniques and stitches, along with clear step-by-step construction guides. Fans of Shaun the Sheep will delight in the adorable knitted characters and stills from Shaun's films and TV series episodes. The pairing of Shaun the Sheep characters with the knitting medium is perfect – the creations are cosy, nostalgic and exude a charming countryside flair. Now, knitting enthusiasts can create their own versions of Shaun and his friends with this exciting new release.

**Title:** 'Shaun The Sheep Baa'rilliant Knits'

**By:** Sachiyo Ishii

**Publisher:** Search Press, £14.99



*Kirstie McLeod*  
Editor

# Stay in touch!

I love seeing what you've been doing, drop me a line with all your latest news



Denise's sweet, sweated-up toys are plump and colourful!

## TOTALLY TOYS

I've been knitting the Knit-A-Teddy patterns and I'm having so much fun with them. I make sure each gets his own sweater (except for the sheep who has his own wool sweater!). My granddaughter has the Koala Bear (pink and purple was her request)! I've made animals for me, my granddaughter and my daughter so far.

### Denise Patternson

These wonderful toys are so well proportioned, and stuffed perfectly, Denise (which can be tricky to get right). I hope your family are enjoying them!



Top knitter Denise has already added a dog, koala, cat and sheep to her Knit-A-Teddy list

## ★ STAR LETTER ★

### PERFECT PONCHOS

I've been knitting since I was a child, and I'm always very reluctant to throw away oddments of wool from finished projects. I've been stashing them all away over the years, convinced that one day I'd find the perfect way of using them up. After retiring last year I finally got round to looking through some patterns I'd also had for years and mostly forgotten about. The pattern for this poncho was my grandmothers and was originally intended to be worked in two colours. I tried working a colour change every two rows with a four-row single colour border and was thrilled with the result. I've now knitted several, with whatever oddments come out of my stash, and each one is original.

### Pam Young

What a unique, inventive knit! We think your stashbusting ponchos are worthy of our top prize, Pam!



It's hard to believe that Pam's crochet-style stitch is actually knitting!

SPONSORED BY



Our star letter writer wins a fantastic gift voucher worth £50 from The Little Wool Company!

\*Prizes subject to change

## WHAT'S TRENDING THIS MONTH

We always keep up with what our readers are making – this issue you're loving baby knits



Pattern in issue 249

### BABY TREAT

Helen adapted this sweet little baby cardi from issue 249, using up oddments of yarn at the same time. She says they were easy to do and are for her craft stall.

■ Helen Green



### KEEP COSY

Knitted for her granddaughter, this baby blanket had over 200 stitches per row and took Hilary weeks of work to complete. It'll make the perfect topper for walks in the pram.

■ Hilary Blair



Pattern in issue 239

### ELMER'S HERE!

Susan recently knitted our Elmer jumper from issue 239 for her nephew who loves Elmer. She swapped up our original background shade to this pretty pale blue. She's pleased with the finished item, and we love it too!

■ Susan Gray



# UK ALPACA



## THE QUITO JACKET

A stylish pattern for autumn in UK Alpaca's double knit yarn

Contact Chas Brooke 07970 415638 or Rachel Hebditch 07540 748803  
info@ukalpaca.com www.ukalpaca.com  
UK Alpaca Ltd, Vulscombe Farm, Pennymoor,  
Tiverton, Devon EX16 8NB



# gathered.

Discover your next craft project

**NEW**

- 1,000s of free patterns
- Step-by-step tutorials
- Video guides



Discover easy-to-follow patterns and tutorials for crochet, knitting, sewing, quilting, papercraft and stitching with the **brand new website** for makers everywhere.

[www.gathered.how](http://www.gathered.how)



# TRULY WOOL RICH



Truly Wool Rich 4 Ply is a hard wearing four ply yarn, perfect for fine garments and sock knitting. The 25% Polyamide content gives added strength with a soft handle and lasting quality. Available in 24 solid shades.



     **FABULOUS QUALITY, SENSIBLY PRICED.** [WWW.CYGNETYARNS.COM](http://WWW.CYGNETYARNS.COM) OR CALL 01274 743374



# SOFT STRIPES

It's time to switch up your accessory game with this stripy three-piece set in cosy squishable chenille yarn. By **Stylecraft**



## \* ACCESSORIES SET



EASY TO KNIT

### YOU WILL NEED

- Stylecraft Squeeze Me DK (100% polyester, 100g/200m)  
1 ball of each
- Yarn A** Emerald Green (5610)
- Yarn B** Apple Green (5614)
- Yarn C** Carrot Orange (5605)
- Yarn D** Stem Ginger (5604)
- Yarn E** Golden Yellow (5618)
- A pair of 3.25mm needles
- A pair of 4mm needles
- Stitch markers

### TENSION

14 sts and 26 rows to measure  
10x10cm (4x4in) over st st using  
4mm needles

### MEASUREMENTS

**Hat**  
Circumference 52cm (20½in)  
Length 27cm (10¾in)

**Scarf**  
Width 20cm (8in)  
Length Approx 158cm (62¼in)

**Fingerless mitts**  
Circumference 19cm (7½in)  
Length 26cm (10¼in)

### ABBREVIATIONS

**rib2tog** Use k2tog or p2tog to  
keep rib correct

For a full list see page 79

### WHERE TO BUY

- For yarn stockists  
contact Stylecraft on  
01495 239416 or [www.  
stylecraft-yarns.co.uk](http://www.stylecraft-yarns.co.uk)

### OR YOU COULD TRY...

- Little Wool Shop  
01495 239416 or  
[www.littlewoolshop.com](http://www.littlewoolshop.com)
- Our Little Craft Co  
[www.ourlittlecraft.co.uk](http://www.ourlittlecraft.co.uk)



## ACCESSORIES SET

**Notes** Cut off each yarn colour after use. Weave yarn ends in as you work to avoid sewing in multiple ends. Because Squeeze Me DK is a chenille yarn it is not suitable for sewing up, use a smooth yarn in a matching colour to sew the seams.

### HAT

**Cast on** 95 sts using 4mm needles and Yarn A.

Change to 3.25mm needles.

**Row 1** (RS) K1, \*P1, K1; rep from \* to end.

**Row 2** P1, \*K1, P1; rep from \* to end.

These 2 rows form K1, P1 rib.

Cont in rib until work measures 5cm, ending with a RS row.

**Dec row** (WS) Rib 5 sts, rib2tog, (rib 2 sts, rib2tog) 21 times, rib 4 sts. [73 sts]

Change to 4mm needles.

Cut off Yarn A and join in Yarn B.

**Row 1** (RS) Knit.

**Row 2** Purl.

These 2 rows form st st.

Work 12 rows more in st st (14 rows in total).

*"This chenille yarn from Stylecraft comes in 20 gorgeous shades, so you can mix and match your colour combos however many times you knit this simple set!"*

KIRSTIE MCLEOD, EDITOR



Cont in st st, working 14-row stripes in the following colour sequence: C, D.

Using Yarn E, work 2 rows in st st, ending with a purl row.

### SHAPE TOP

**Dec row** (RS) (K10, k2tog) 6 times, K1. [67 sts]

Purl 1 row.

**Dec row** (K9, k2tog) 6 times, K1. [61 sts]

Purl 1 row.

**Dec row** (K8, k2tog) 6 times, K1. [55 sts]

Purl 1 row.

**Dec row** (K7, k2tog) 6 times, K1. [49 sts]

## STEP-BY-STEP K2TOG KNIT TWO STITCHES TOGETHER



**1** Insert the point of the right-hand needle through the loops of the next two stitches as if to knit.



**2** Wind the yarn round the tip of the right-hand needle and pull the yarn through the two stitches, knitting them both together.



**3** Drop the two stitches from the left-hand needle and keep the new stitch on the right-hand needle.



**4** Knitting two stitches together decreases your stitch count by one, and the decrease stitch leans to the right. This is how a series of k2tog decreases will look.

Purl 1 row.

**Dec row** (K6, k2tog) 6 times, K1. [43 sts]

**Dec row** (WS) P1, (p2tog, P5) 6 times. [37 sts]

**Dec row** (RS) (K4, k2tog) 6 times, K1. [31 sts]

**Dec row** P1, (p2tog, P3) 6 times. [25 sts]

**Dec row** (K2, k2tog) 6 times, K1. [19 sts]

**Dec row** P1, (p2tog, P1) 6 times. [13 sts]

Cut yarn, leaving a long yarn end for finishing. Thread yarn through rem 13 sts and pull tight to gather. Sew in yarn end securely.

## MAKING UP

Join seam, matching stripes. See ball band for washing and further care instructions.

## SCARF

**Cast on** 35 sts using 4mm needles and Yarn A.

Change to 3.25mm needles.

**Row 1** (RS) P4, K1, \*P1, K1; rep from \* to last 4 sts, P4.

**Row 2** K4, P1, \*K1, P1; rep from \* to last 4 sts, K4.

These 2 rows form K1, P1 rib with rev st st edges.

Cont as set until work measures 5cm ending with a RS row.

**Dec row** (WS) K4, rib2tog, (rib 3 sts, rib2tog) 5 times, K4. [29 sts]

Change to 4mm needles.

Cut off Yarn A and join in Yarn B.

**Row 1** (RS) P4, knit to last 4 sts, P4.

**Row 2** K4, purl to last 4 sts, K4.

These 2 rows form st st with rev st st edges.

Work 12 rows more in patt (14 rows in total).

Cont in patt, working 14-row stripes in the following colour sequence: C, D, E, A, B, C, D, E, A.

Using Yarn E, work in patt until centre panel measures 40cm, ending with a WS row.

Cont in patt, working 14-row stripes in the following colour sequence: A, E, D, C, B, A, E, D, C.

Using B, work 13 rows in patt, ending with a RS row.

**Inc row** (WS) K4, P1, M1, (P4, M1) 5 times, K4. [35 sts]

Change to 3.25mm needles and join in Yarn A.

Starting with Row 1, work 5cm in K1, P1 rib with rev st st edges, ending with a RS row.

Change to 4mm needles.

**Cast off** in patt.

## MAKING UP

Pin out Scarf to measurements given. Cover with clean damp tea towels and leave to dry. See ball band for washing and further care instructions.

## FINGERLESS MITTS (MAKE 2)

**Cast on** 37 sts using 4mm needles and Yarn A.

Change to 3.25mm needles.

**Row 1** (RS) K1, \*P1, K1; rep from \* to end.

**Row 2** P1, \*K1, P1; rep from \* to end.

These 2 rows form K1, P1 rib.

Cont in rib until work measures 5cm, ending with a RS row.

**Dec row** (WS) (Rib 2 sts, rib2tog, rib 1 st, rib2tog) 5 times, rib 2 sts. [27 sts]

Change to 4mm needles.

Cut off Yarn A and join in Yarn B.

**Row 1** (RS) Knit.

**Row 2** Purl.

These 2 rows form st st.

Work 12 rows more in st st (14 rows in total).

Using Yarn C, work 14 rows in st st.

Using Yarn D, work 13 rows in st st, ending with a knit row.

**Inc row** (WS) (P4, M1) 6 times, P3. [33 sts]

Change to 3.25mm needles and join in Yarn A.

Starting with Row 1, work 5cm in K1, P1 rib, ending with a RS row.

Change to 4mm needles.

**Cast off** in patt.

## MAKING UP

To indicate gap for thumb, place a marker in the side edge 16cm above cast-on edge. Leave a gap of 4cm, and place another marker. Join seam from cast-on edge to bottom marker. Sew in yarn end securely. Leave the gap and sew from top marker to cast-off edge. Cover with a clean damp tea towel and leave to dry. See ball band for washing and further care instructions. ●



# ★★ THE BIG PRIZE DRAW

## WIN! A HUGE CYGNET YARN PRIZE!

Fill up your yarn stash with this collection of tactile treats from a top UK brand!

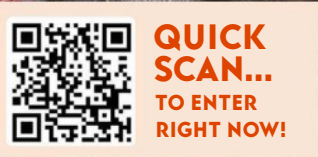
**F**ormed in 2004, Cygnet Yarns is dedicated to bringing yarns of the highest quality at competitive prices to the hands of crafters. They offer a fantastic range of yarns from 100% pure new wool to premium acrylics, from 4plys to their signature super chunkies. Their yarns are fresh and innovative in a varied range of bright, neutral and pastel colour palettes in solids and colour-popping brights. That's why this issue we're thrilled to be able to give one lucky reader the chance to win over 100 Cygnet yarn balls in our huge competition. From Marshmallow Pies to Sugar Spun, Cotton Drops to Boho Spirit, there's a yarn or two or three (!) you'll enjoy turning into something special for yourself, a loved one or a special charity.

**For details on how to enter see below.**

\*Terms and conditions apply



**WOW**  
OVER 100 BALLS  
OF GORGEOUS  
CYGNET YARN!



# THE BIG PRIZE DRAW ✨



**PRIZE  
WORTH  
£520**

## WHAT YOU COULD WIN

ONE LUCKY READER WILL WIN:

- 6 balls of Marshmallow Pies in shade Sleigh Bells Bling (1900)
- 6 balls of Marshmallow Pies in shade Knowledge is Flower (1600)
- 10 balls of Boho Spirit in shade Festival (6923)
- 10 balls of Boho Spirit in shade Dream (6943)
- 10 balls of Sugar Spun in shade Floating Island (3110)
- 10 balls of Sugar Spun in shade Cotton Slub (3880)
- 10 balls of Sugar Spun in shade Cotton Candy (3440)
- 10 balls of Sugar Spun in shade Fluffy Clouds (3330)
- 5 balls of Cotton Drops in shade Thunder Grey (5333)
- 5 balls of Cotton Drops in shade Merigold (5777)
- 5 balls of Cotton Drops in shade Linen White (5666)
- 10 balls of Jellybaby Glitter in shade Firecracker (016)
- 10 balls of Jellybaby Glitter in shade Golden Crunch (071)

## HOW TO ENTER

It's easy to enter via our website. Visit [www.gathered.how/competitions](http://www.gathered.how/competitions) and click on the prize draw you want to enter. You will need to sign in or register on the site and answer a question. One winner will win the full prize. Aged 18+ years UK entrants only. Find general terms and conditions at [www.gathered.how/competition-terms-and-conditions](http://www.gathered.how/competition-terms-and-conditions). **Closing date: 17 October 2024**

**NEW DIGITAL MAGAZINE**



**NEW!**  
creative lifestyle  
magazine

**INSIDE EACH ISSUE:**

**DISCOVER THE LATEST TRENDS**  
Packed with fashion, interiors and self-care reads

**GET CREATIVE WITH EXPERT GUIDES**  
Learn new skills with step-by-step projects and celebrate your individual style

**IMPROVE YOUR LIFE WITH MINDFUL MOMENTS**  
Find inspirational ways to boost your wellbeing with creative activities

**READ THE CURRENT ISSUE INSTANTLY**

IN THE SPECIALS TAB OF *Simply* **knitting\*** APP OR HERE:



Brought to you by **gathered. how**

# MONSTER MASH

Looking for a fun garment to knit for your little one? It'll be all fright on the night with our friendly monster hoodie. By **Jane Burns**





## IMPROVE YOUR SKILLS

### YOU WILL NEED

- Yarnsmiths Create DK (100% acrylic, 100g/290m)  
*For yarn quantities and measurements see size table*
- A pair of 3.25mm needles
- A pair of 4mm needles
- A 3.25mm circular needle, 40cm long (optional)
- 6 (6: 7: 7: 7) buttons, 2.5cm wide
- Stitch markers
- Stitch holder
- Toy stuffing
- Sewing needle and black thread

### TENSION

22 sts and 30 rows to measure 10 x 10cm (4x4in) over stocking stitch using 4mm needles

### ABBREVIATIONS

For a full list see page 79



### WHERE TO BUY

- For Yarnsmith yarns contact Wool Warehouse on 01926 882818 or [www.woolwarehouse.co.uk](http://www.woolwarehouse.co.uk)

### KEY

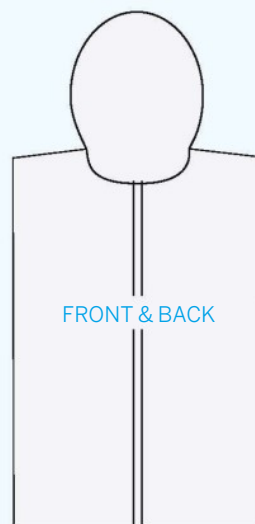
- Yarn A
- Yarn B
- Yarn C
- Yarn D

### HOW TO USE OUR CHARTS

Start at the bottom right-hand corner. Read right side rows from right to left and wrong side rows from left to right. A row of squares represents a row of knitting



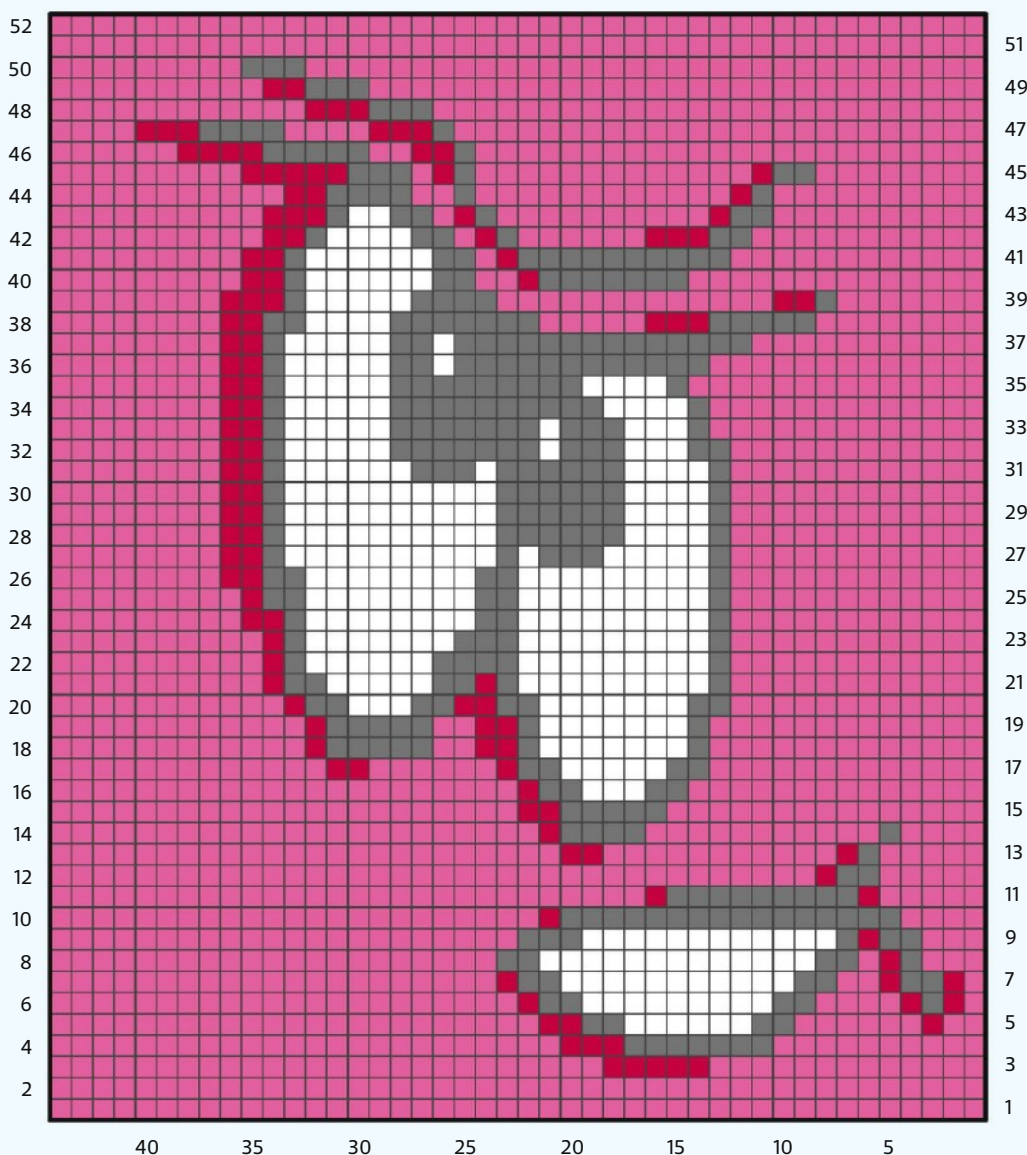
32 (36: 36: 39: 40)cm  
12½ (14¼: 14¼: 15¼: 15½)in



34 (37: 48: 52: 56)cm  
13½ (14½: 19: 20½: 22)in

32.5 (34.5: 38: 40: 42.5)cm  
12¾ (13½: 15: 15¾: 16¾)in

### CHART





**FIND YOUR SIZE**

SIZE		2-3y	4-5y	6-7y	8-9y	10-11y
TO FIT CHEST	cm	56	61	65.5	69	73.5
	in	22	24	25¾	27¼	29
ACTUAL CHEST	cm	65.5	69	76	80	85.5
	in	25¾	27¼	30	31½	33¾
LENGTH	cm	34	37	48	52	56
	in	13½	14½	19	20½	22
SLEEVE LENGTH	cm	32	36	36	39	40
	in	12½	14¼	14¼	15¼	15¾
YARN		Yarnsmiths Create DK (100g/290m)				
Yarn A Bright Pink (3368)		3	4	4	5	6
Yarn B Fuchsia Pink (3370)		1	1	1	1	1
Yarn C Black (3000)		1	1	1	1	1
Yarn D White (3040)		1	1	1	1	1

**SIZING COLOUR KEY** So you can re-use this pattern, we've colour-coded the sizing instructions. Simply follow our colour-coded measurements and you're off



*"This super-fun jumper is not just for Halloween, your little ones will love snuggling up in it for autumn and beyond! Knit it in different colours as they grow."*

SOPHIE JORDAN, DEPUTY EDITOR


**KIDS' HOODIE GARMENT BACK**

**Cast on** 72 (76: 84: 88: 94) sts using 3.25mm needles and Yarn A.

**Row 1** (RS) \*K1, P1; rep from \* to end.

**Row 2** (WS) \*P1, K1; rep from \* to end.

These 2 rows set moss st. Work 8 further rows in moss st.

Change to 4mm needles.

Starting with a knit row, work 10 (20: 40: 40: 50) rows in st st.

**SET CHART**

**Row 1** (RS) K14 (16: 20: 22: 25) in Yarn A, work Row 1 from Chart, K14 (16: 20: 22: 25) in Yarn A.

**Row 2** (WS) P14 (16: 20: 22: 25) in Yarn A, work Row 2 from Chart, P14 (16: 20: 22: 25) in Yarn A.

**Rows 3 to 52** Work from Chart as set AT THE SAME TIME when piece measures 20 (21.5: 33: 35: 37)cm from cast-on edge, ending after a WS row, place marker at beg and end of row to mark Sleeve placement.

Once Chart is complete, cont in st st using only Yarn A until piece measures 34 (37: 48: 52: 56)cm from cast-on edge, ending after a RS row.

**Next row** (WS) P22 (24: 28: 29: 31), PM, P28 (28: 28: 30: 32), PM, P22 (24: 28: 29: 31).

**Cast off** keeping markers in place.

**LEFT FRONT**

**Cast on** 32 (32: 36: 40: 42) sts using 3.25mm needles and Yarn A. Work 10 rows in moss st as for Back.

Change to 4mm needles.

**Next row** (RS) Knit to end, inc 0 (2: 0: 0) sts evenly across.

[32 (34: 36: 40: 42) sts]

Beg with a purl row, work in st st until piece measures 20 (21.5: 33: 35: 37)cm from cast-on edge, ending after a WS row, place marker





at beg and end of row to mark sleeve placement.\*\*  
Cont in st st until piece measures 27 (30: 40.5: 44.5: 48.5)cm from cast-on edge, ending after a RS row.

**Next row (WS) Cast off** 4 (4: 5: 6: 6) sts, purl to end.

[28 (30: 31: 34: 36) sts]

**Next row (RS) Knit.**

**Cast off** 1 st at neck edge on next row and foll alt rows until 22 (24: 24: 27: 29) sts rem.

Cont without shaping until piece measures 34 (37: 48: 52: 56)cm from cast-on edge, ending after a WS row.

**Cast off.**

### BUTTON BAND

Using 3.25mm needles and Yarn A, pick up and knit 67 (75: 97: 105: 115) sts along Left Front edge from beg of neck shaping to cast-on edge.

**Row 1** \*K1, P1; rep from \* to last st, K1.

This row sets moss st.

Repeat Row 1 a further 12 times.

**Cast off.**

### RIGHT FRONT

Work as Left Front to \*\*.

Cont in st st until piece measures 27 (30: 40.5: 44.5: 48.5)cm from cast-on edge, ending after a WS row.

**Next row (RS) Cast off** 4 (4: 5: 6: 6) sts, knit to end.

[28 (30: 31: 34: 36) sts]

**Next row (WS) Purl.**

**Cast off** 1 st at neck edge on next row and foll alt row until 22 (24: 24: 27: 29) sts rem.

Cont without shaping until piece measures 34 (37: 48: 52: 56)cm from cast-on edge, ending after a WS row.

**Cast off.**

### BUTTONHOLE BAND

Using 3.25mm needles and Yarn A, pick up and knit 67 (75: 97: 105: 115) sts along Right Front edge from cast-on edge to beg of neck shaping.

Work 6 rows in moss st as for Button Band.

**Next row** (buttonhole row) Moss st 3 (4: 3: 4: 3) sts, \*yo, ssk, moss st 10 (11: 13: 14: 16) sts; rep from \* 4 (4: 5: 5: 5) more times, yo, ssk, moss st 2 (4: 2: 3: 2) sts.

Work 6 further rows in moss st.

**Cast off.**

### SLEEVES (MAKE TWO)

**Cast on** 36 (36: 48: 52: 56) sts using 3.25mm needles and Yarn A. Work 10 rows in moss st as for Back.

Change to 4mm needles.

**Next row** (RS) Knit to end, inc 3 (3: 0: 0: 0) evenly across.

[39 (39: 48: 52: 56) sts]

Starting with a purl row, work in st st (throughout), inc 1 st at each end of 4th (4th: 6th: 4th: 4th) row and every foll 3rd (3rd: 6th: 4th: 4th) row until you have 61 (67: 64: 58: 66) sts.

### SIZE 6-7 YEARS ONLY

Inc 1 st at each end of foll 8th row, once. [- (: 66: -: -) sts]

### SIZES 8-9 AND 10-11 YEARS ONLY

Inc 1 st at each end of - (: 9: 8) foll 6th rows. [- (: -: 76: 82) sts]



**ALL SIZES**

Cont in st st without shaping until piece measures 32 (36: 36: 39: 40) cm from cast-on edge, ending after a WS row.

**Cast off.**

**HOOD**

**Cast on** 81 (84: 96: 100: 104) sts using 4mm needles and Yarn A. Starting with a knit row, work in st st until piece measures 21 (22: 23: 23) cm from cast-on edge, ending after a WS row.

**Next row Cast off** 27 (28: 34: 35: 36) sts, knit until there are 27 (28: 28: 30: 32) sts on RH needle, **cast off** rem sts.

With WS facing, rejoin Yarn A to rem 27 (29: 28: 30: 32) sts, purl to end.

Cont in st st until piece measures 12 (13: 15: 16: 16.5) cm from cast-off sts.

**Cast off.**

Join side edges of last section to cast-off sts at sides to close top of Hood.

**HOOD BORDER**

Using 3.25mm needles and Yarn A, pick up and knit 54 (57: 62: 62: 62) sts even along the left front side of the Hood, 27 (29: 35: 37: 41) across centre cast-off edge, 54 (57: 62: 62: 62) sts along right front side of Hood. [135 (143: 159: 161: 165) sts]

Work 8 (8: 10: 10: 10) rows in Moss st as set for Button Band.

**Cast off.**

**SPIKES (MAKE 3)**

**Cast on** 32 sts using 3.25mm needles and Yarn C.

**Row 1** Knit.

**Row 2** Purl.

**Row 3** K1, (K1, ssk, K9, k2tog, K1) twice, K1. [28 sts]

**Rows 4 to 6** Beg with a purl row, work in st st.

**Row 7** K1, (K1, ssk, K7, k2tog, K1) twice, K1. [24 sts]

**Row 8** Purl.

**Row 9** K1, (K1, ssk, K5, k2tog, K1) twice, K1. [20 sts]

**Row 10** Purl.

**Row 11** K1, (K1, ssk, K3, k2tog, K1) twice, K1. [16 sts]

**Row 12** Purl.

**Row 13** K1, (K1, ssk, K1, k2tog, K1) twice, K1. [12 sts]

**Row 14** Purl.

**Row 15** K1, (ssk, K1, k2tog) twice, K1. [8 sts]


**Row 16** Purl.

**Row 17** K1, (sl1, k2tog, psso) twice, K1. [4 sts]

Thread tail yarn through rem 4 sts, pull tight to close. Sew seam closed.

**FINISHING**

Join shoulder seams. Sew Hood into position using the image and markers on Back piece as a guide. The edges of the Hood border should overlap the front button bands slightly. Fold Sleeves in half lengthwise and place stitch marker on cast-off edge; use this stitch marker to line the centre of the Sleeve cap with the shoulder seam, and pin Sleeve into place. Once happy, sew into position. Join side and Sleeve seams. Using image as a guide, pin spikes to centre of hood and lightly stuff, then sew spikes into position using sewing needle and black thread. Block garment to measurements, following any instructions on the ball band. Sew on buttons.

**Note** Once you have finished your garment, place a balloon inside the Hood and blow up until it shapes the Hood, spray with water and leave to dry, this will block the Hood nicely. 



# Enjoy the UK's favourite knitting magazine on your tablet or mobile device!



# Simply Knitting

- \* Download the latest issue of *Simply Knitting* and start reading it immediately
- \* Your issues won't take up any storage space in your home!
- \* Get 13 issues AND the current issue in your first year
- \* Download it once... read it offline forever!

Instant  
access

To subscribe, simply visit:  
[www.gathered.how/digital-issues/](http://www.gathered.how/digital-issues/)



IMAGE: ADRIENNE ANDERSEN-LUDKAKBPRPWJUNSPASH

## SAVE TIME AND MONEY WITH A DIGITAL SUBSCRIPTION



The digital version of the magazine does not include the cover gift that you would find on newsstand copies, nor does it include access to Craft Circle. Current issue included as a bonus with a subscription direct from Apple or Google Play App Stores.

Join the collective  
CRUISE-COLLECTIVE.COM



*Get*  
**ONBOARD**

*Your greatest discovery yet*

Whether you want to cruise the coastlines of the Caribbean, Rome further from home or marvel at the heights of the northern lights, we've got it all.

Find expert guides, get inspired and uncover exclusive deals. All this and more, for FREE.



# AUTUMN COSY

Pick a neutral tweedy yarn to really show off the bold cables and chunky shawl collar in this season's must-knit. By **Pat Menchini**

TRY A  
shawl  
collar!

EXCLUSIVE TO  
Simply  
Knitting  
EXCLUSIVE TO



## IMPROVE YOUR SKILLS

### YOU WILL NEED

- Rico Essentials Mega Wool Tweed Chunky (55% wool, 45% acrylic, 5% viscose, 100g/125m)

For yarn quantities and measurements see size table

- A pair of 5mm needles
- A pair of 6mm needles
- A cable needle (cn)
- A stitch holder (optional)

### TENSION

15 sts and 19 rows to measure 10x10cm (4x4in) over rev st st using 6mm needles

10-st cable measures 3.5cm wide

### ABBREVIATIONS

**C10B** Slip next 5 sts on cn and hold at back of work, K5, then K5 from cn

For a full list see page 79

### WHERE TO BUY

- For yarn stockists visit Rico at [www.rico-design.de/en](http://www.rico-design.de/en)

### OR YOU COULD TRY...

- Laughing Hens 01829 740903 or [www.laughinghens.com](http://www.laughinghens.com)
- Loop Knitting [www.loopknitting.com](http://www.loopknitting.com)



## MEN'S JUMPER SLEEVES

(Worked top down)

**Cast on** 58 (62: 68: 72: 78) sts loosely using 6mm needles.

**Row 1 (RS)** K2, P16 (18: 20: 22: 24), K1, P5 (5: 6: 6: 7), K10, P5 (5: 6: 6: 7), K1, P16 (18: 20: 22: 24), K2.

**Row 2** P2, K16 (18: 20: 22: 24), P1, K5 (5: 6: 6: 7), P10, K5 (5: 6: 6: 7), P1, K16 (18: 20: 22: 24), P2.

**Rows 3 to 8** Rep Rows 1 and 2 another 3 times.

**Row 9** As Row 1, but working C10B in place of K10.

**Row 10** As Row 2.

These 10 rows set patt.

**Dec row** K2, p2tog, patt to last 4 sts, p2tog, K2. [2 sts dec'd]

Cont in patt working dec row on every foll 8th (8th: 6th: 6th: 6th) row until 46 (56: 50: 58: 72) sts rem, then on every foll 6th (6th: 4th: 4th: 4th) row until 38 (40: 42: 44: 46) sts rem.

Work a few rows straight until Sleeve measures 42cm, measured through centre of work, ending after a RS row.

Change to 5mm needles

**Next row (WS)** P3 (7: 5: 7: 7), \*p2tog, P4 (6: 4: 2: 4); rep from \* until 5 (9: 7: 9: 9) sts rem, p2tog, P to end. [32 (36: 36: 36: 40) sts]

**Next row (RS)** K3, (P2, K2) to last st, K1.

**Next row** K1, (P2, K2) to last 3 sts, P2, K1.

Rep last 2 rows until cuff measures 6cm, or desired length, ending after a WS row.

**Cast off** evenly in rib.

### BACK

**Cast on** 76 (80: 88: 96: 100) sts using 5mm needles.

**Row 1 (RS)** K3, (P2, K2) to last st, K1.

**Row 2** K1, (P2, K2) to last 3 sts, P2, K1.

Rows 1 and 2 set rib.

Cont in for 6cm, ending after a RS row.

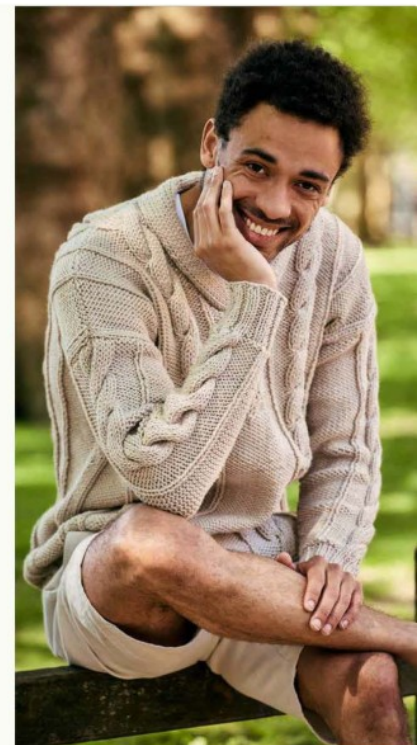
**Next row (WS)** P12 (10: 14: 15: 8), \*M1P, P4 (4: 4: 5: 5); rep from \* to



## FIND YOUR SIZE

SIZE		S	M	L	1XL	2XL
TO FIT CHEST	cm	91-97	102-107	112-117	122-127	132-137
	in	36-38	40-42	44-46	48-50	52-54
ACTUAL CHEST	cm	106	114.5	125	133	143.5
	in	41¾	45	49¼	52½	56½
LENGTH	cm	67	69	69	70	70
	in	26½	27¼	27¼	27½	27½
SLEEVE LENGTH	cm	48	48	48	48	48
	in	19	19	19	19	19
YARN	Rico Essentials Mega Wool Tweed Chunky (100g/125m)					
O11		9	9	10	11	12

**SIZING COLOUR KEY** So you can re-use this pattern, we've colour-coded the sizing instructions. Simply follow our colour-coded measurements and you're off



*"I love the way the chunky cabling defines the relaxed fit of this jumper – they also add weight to the garment which makes an ideal knit for autumn."*

KIRSTIE MCLEOD, EDITOR



last 12 (10: 14: 16: 7) sts, M1P, P to end. [90 (96: 104: 110: 118) sts]  
Change to 6mm needles.

**SET LOWER CABLE PATTERN**

**Row 1** (RS) K3, P6 (9: 10: 5: 5), [K1, P5 (5: 6: 6: 7)] 1 (1: 1: 2: 2) times, \*K1, P5 (5: 6: 6: 7), K10, P5 (5: 6: 6: 7), K1\*, P16 (16: 16: 18: 18), work from \* to \* again, [P5 (5: 6: 6: 7), K1] 1 (1: 1: 2: 2) times, P6 (9: 10: 5: 5), K3.

**Row 2** P3, K6 (9: 10: 5: 5), [P1, K5 (5: 6: 6: 7)] 1 (1: 1: 2: 2) times, \*P1, K5 (5: 6: 6: 7), P10, K5 (5: 6: 6: 7), P1\*, K16 (16: 16: 18: 18), work from \* to \* again, [K5 (5: 6: 6: 7), P1] 1 (1: 1: 2: 2) times, K6 (9: 10: 5: 5), P3.

**Rows 3 to 6** Rep Rows 1 and 2 twice.

**Row 7** K3, P6 (9: 10: 5: 5), [K1, P5 (5: 6: 6: 7)] 1 (1: 1: 2: 2) times, \*K1, P5 (5: 6: 6: 7), C10B, P5 (5: 6: 6: 7), K1\*, P16 (16: 16: 18: 18), work from \* to \* again, [P5 (5: 6: 6: 7), K1] 1 (1: 1: 2: 2) times, P6 (9: 10: 5: 5), K3.

**Row 8** As Row 2.

**Rows 9 and 10** As Rows 1 and 2.

Rep last 10 rows another 6 times.

**SET UPPER CABLE PATTERN**

**Row 1** (RS) Patt 37 (40: 44: 46: 50), P5 (5: 5: 6: 6), K6, P5 (5: 5: 6: 6), patt to end.

**Row 2** Patt 37 (40: 44: 46: 50), K5 (5: 5: 6: 6), P6, K5 (5: 5: 6: 6), patt to end.

**Rows 3 to 5** Rep Rows 1 and 2 once, then Row 1 again.

**Row 6** (WS inc) Patt 37 (40: 44: 46: 50), K5 (5: 5: 6: 6), (P1, M1P) twice, P2, (M1P, P1) twice, K5 (5: 5: 6: 6), patt to end. [94 (100: 108: 114: 122) sts]

**Row 7** Patt 37 (40: 44: 46: 50), P5 (5: 5: 6: 6), C10B, P5 (5: 5: 6: 6), patt to end.\*\*

Maintaining continuity of patt and working the cables on 10th row as set, work straight until Back measures 67 (69: 69: 70: 70)cm from cast-on edge, ending after a WS row.

**STEP-BY-STEP M1 MAKE 1 INCREASE**


**1** Insert the point of the right-hand needle under the loop or line of yarn that lies between the two stitches.



**2** Next slip the yarn back on to the left-hand needle, ready for knitting.



**3** Insert the point of the right-hand needle into the back of the stitch as if to knit.



**4** Pull the yarn all the way through and you will now have an extra stitch on your right-hand needle.



### SHAPE SHOULDERS

**Cast off** 8 (9: 9: 10: 11) sts at beg of next 6 rows, then 10 (9: 12: 11: 12) sts at beg of next 2 rows.

**Cast off** rem 26 (28: 30: 32: 32) sts loosely and working p2tog five times across centre 10 sts.

Place a marker on centre st of back neck.

### FRONT

Work as for Back to \*\*.

Work 20 more rows maintaining continuity of patt and working the cables every 10th row as set.

### DIVIDE FOR NECK

**Next row** (WS) Patt 47 (50: 54: 57: 61) and slip these sts on a stitch holder and leave for Right Neck, P5 across rem sts of centre cable, patt to end.

Cont working on these 47 (50: 54: 57: 61) sts for Left Neck.

### SHAPE LEFT NECKBAND AND FRONT SLOPE

**Row 1** (RS) Patt to last 8 sts, p2tog, P1 (for front slope), pm, K to last 2 sts, M1 (for neckband), K2.

**Row 2** P to marker, sm, K2, patt to end.

**Row 3** Patt to 3 sts before marker, p2tog, P1, sm, K to last 2 sts, M1, K2.

Repeat Rows 2 and 3 another 1 (2: 1: 2: 2) times, then work Row 3 on 5 (5: 6: 6: 6) foll 4th rows.

**Note** A total of 8 (9: 9: 10: 10) increases and decreases have been worked, and the neckband should have 13 (14: 14: 15: 15) sts.

\*\*\*Work without shaping until Front measures same as Back up to start of shoulder shaping, ending at the armhole edge.

### SHAPE SHOULDER

**Cast off** 8 (9: 10: 10: 11) sts at beg of next row and the 2 foll alt rows. Work 1 row straight.

**Cast off** 10 (9: 10: 12: 13) sts, work to end. [13 (14: 14: 15: 15) sts]

Cont in st st and work straight for back neck border until strip fits across back neck to marker.

**Cast off**, or leave sts on a holder, and when right strip is finished the 2 ends of the borders can be grafted together if you prefer.

### SHAPE RIGHT NECKBAND AND FRONT SLOPE

With RS facing neatly rejoin yarn at neck edge to rem 47 (50: 54: 57: 61) sts.

**Row 1** (RS) K2, M1, K3, P1, p2tog, pm, patt to end.

**Row 2** Patt to marker, sm, K2, P to end.

**Row 3** K2, M1, K to 3 sts before marker, P1, p2tog, sm, patt to end.

Repeat Rows 2 and 3 another 1 (2: 1: 2: 2) times, then work Row 3 on 5 (5: 6: 6: 6) foll 4th rows.

**Note** A total of 8 (9: 9: 10: 10) increases and decreases have been worked, and the neckband should have 13 (14: 14: 15: 15) sts.

Work from \*\*\* as for Left Front.

### MAKING UP

Do not press. Join shoulders. Fold neckband in half and stitch inner edge of neck border neatly to back of neck, joining cast-off edges at centre. Stitch cast-on edge of Sleeves to upper sections of Back and Front. Join side and sleeve seams using mattress stitch. ●

# Lend a hand



Cast on a copyright-free knit, sell it for good causes and discover a passion for fundraising with our charity focus

## Charity of the MONTH

We spoke to Georgie White, Communications Manager, from Carers Trust



**Charity** Carers Trust

**Established** Our founder charity, the Crossroads Care Attendant Scheme, was established in 1973 (named after a storyline on the

Crossroads TV show!)

**What do you do?** We support unpaid carers across the UK through our network of local carer organisations. An unpaid carer is anyone who cares, unpaid, for someone who for whatever reason – including illness, disability, a mental health condition or addiction – cannot cope without their support. Anyone can be an unpaid carer, and in the UK, there are over five million unpaid carers. At Carers Trust, our work includes providing grants of up to £300 for these people when they need it most. This could be for essential items like a fridge or a washing machine, or to enable them to have a short break from caring. With so many carers forced to give up work due to the demands of their caring role, these grants provide a lifeline for millions who've been pushed into poverty.

**What can knitters do to help?** Be it a one-off gift, or setting up a regular donation, supporting Carers Trust means we can keep on providing these vital grants to unpaid carers. Visit [www.donate.carers.org](http://www.donate.carers.org) or call 0300 772 9600 to support us.

### Contact details

To find out more, visit the Carers Trust website [www.carers.org](http://www.carers.org) or call 0300 772 9600.



**CARERS TRUST**



Unpaid carers provide an essential lifeline for those in need

## COPYRIGHT-FREE KNIT

# Cosy time

Cast on our hot water bottle cover and sell it to raise well-needed funds



### TAKE ON A CHALLENGE

### YOU WILL NEED

- King Cole Fashion Aran (70% acrylic, 30% wool, 100g/200m) 1 ball of Iona (3317)
- A pair of 5mm needles
- Four buttons
- Card disks for pom-poms, each approx 7cm wide with a 5cm hole in the middle

### TENSION

18 sts and 24 rows to measure 10x10cm (4x4in) over stocking stitch using 5mm needles

### ABBREVIATIONS

For a full list see page 79

### HOT WATER BOTTLE

**Cast on** 44 sts using 5mm needles.

Knit 5 rows.

**Next row** (Buttonhole) K4, yo, k2tog, K9, yo, k2tog, K9, k2tog, yo, K10, k2tog, yo, K4.

Knit 10 rows.

**Next row** **Cast on** 44 sts, knit to end of row. [88 sts]

**Row 1** P2, (yo, ssk, k2tog, yo, P2), twice, K4, C4B, C4F, K4, P2, (yo, ssk, k2tog, yo, P2), twice, K to end of row.

**Row 2 and every alt row** P44, K2, (P4, K2) twice, P16, K2, (P4, K2) twice.

**Row 3** P2, k2tog, yo twice, ssk, P2, k2tog, yo twice, ssk, P2, K2, C4B, K4, C4F, K2, P2, k2tog, yo twice, ssk, P2, k2tog, yo twice, ssk, P2, K to end of row.

**Row 5** P2, (yo, ssk, k2tog, yo, P2), twice, C4B, K8, C4F, P2, (yo, ssk, k2tog, yo, P2), twice, K to end of row.

**Row 7** P2, k2tog, yo twice, ssk, P2, k2tog, yo twice, ssk, P2, K4, C4B, C4F, K4, P2, k2tog, yo twice, ssk, P2,



k2tog, yo twice, ssk, P2, K to end of row.

**Row 9** P2, (yo, ssk, k2tog, yo, P2), twice, K2, C4B, K4 C4F, K2, P2, (yo, ssk, k2tog, yo, P2), twice, K to end of row.

**Row 11** P2, k2tog, yo twice, v, P2, k2tog, yo twice, ssk, P2, C4B, K8, C4F, P2, k2tog, yo twice, ssk, P2, k2tog, yo twice, sl1, K1, pssso, P2, K to end of row.

Cont to work as set repeating patt 4 more times, ending on a Row 12.

**Next row** (RS) **Cast off** 12 sts, K20, **cast off** 24 sts, K20, **cast off** remaining sts. [40 sts total on the needle]

**Next row** (WS) Rejoin the yarn to the first set of 20 sts, P2, K2. \*

**Next row** K2, P2, to end of row.

**Next row** P2, K2 to end of row.

**Next row** (Eyelets) (K2tog, yo, P2), rep to end of row.

**Next row** P2, K2 to end of row.

Continue in the K2, P2 rib until the rib section measures 6.5cm, **cast off** in rib.

**Next row** (WS) Rejoin the yarn to the second set of 20 sts, P2, K2 Repeat from \* to **cast off**.

### MAKING UP

Weave in loose ends. With RS facing sew tog side seam, top edge of the cover and sides of ribbing. Turn right way out and attach buttons to bottom edge. With the remaining yarn make 2 small pom-poms and a length of twisted cord. Thread the cord through the eyelets and then sew the pom-poms to the ends of the cords. ●

If you're thinking of knitting projects for charity, or to sell, please refer to our information on page 81.

# Count the days

Treat your knitting needles to the ultimate festive build-up with **Angela Turner's** gorgeous Christmas calendar blanket

**PART**  
*one*

**CAST ON  
OUR KAL**

Collect all three parts to create this gorgeous Christmas blanket

*Fun festive  
knitting*



EXCLUSIVE TO  
*Simply*  
**Knitting**  
EXCLUSIVE TO



**TAKE ON A CHALLENGE**

**YOU WILL NEED**

- Yarnsmiths Create DK (100% acrylic, 100g/290m) 2 balls of
- Yarn B** Petrol (3234) 1 ball each of
- Yarn A** Sky Blue (3260)
- Yarn C** Cream (3050)
- Yarn D** Silver (3030)
- Yarn E** Dark Sage (3202)
- Yarn F** Sienna Red (3094)
- Yarn G** Dark Grey Heather (3010)
- Yarn H** White (3040)
- Yarn J** Chocolate Brown (3080)
- Yarn K** Rust (3074)
- Yarn L** Gunmetal Grey (3005)
- Yarn M** Peachy Pink (3420)

- Yarn N** Antique Gold (3145)
- Yarn P** Blush (3062)
- Yarn Q** Bright Yellow (3164)

- A pair of 4mm needles
- A set of 3.75mm circular needles (for border)
- Black embroidery thread
- Stitch holder (for border)

**TENSION**

22 sts and 29 rows to measure 10x10cm (4x4in) over st st using 4mm needles

**MEASUREMENTS**

**Blanket** Approx 87cm (34¼in) wide x 127cm (50in) long  
**Each square** 20x20cm (8x8in) when blocked

**ABBREVIATIONS**

For a full list see page 79



**WHERE TO BUY**

For Yarnsmith yarns contact Wool Warehouse on 01926 882818 or [www.woolwarehouse.co.uk](http://www.woolwarehouse.co.uk)

**TOP TIP**

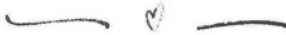
When working Swiss darning work each stitch carefully over the existing knit stitches, copying their shape. Keep your tension consistent to create an even, seamless design.

**KEY**

- Background colour
-  Yarn A
-  Yarn B
-  Yarn C
-  Yarn D
-  Yarn E
-  Yarn F
-  Yarn G
-  Yarn H
-  Yarn J
-  Yarn K
-  Yarn L
-  Yarn M
-  Yarn N
-  Yarn P
-  Yarn Q
-  Embroider with black thread

*"I always love our KALs and this festively themed patchwork blanket by Angela Turner is sure to get you in the mood for Christmas. Don't miss Parts 2 and 3 coming soon!"*

KIRSTIE MCCLEOD, EDITOR



**FESTIVE BLANKET KAL**

**Note** The Chart represents the stocking stitch area of the square – the garter stitch borders are not included in the Chart.

**SQUARE (MAKE 1 IN YARN A, 2 IN YARN B, 2 IN YARN C AND 2 IN YARN D)**

- Cast on** 45 sts using 4mm needles and Yarn A.
- Rows 1 to 4** Work in garter st.
- Row 5** Knit.
- Row 6** K3, purl to last 3 sts, K3. Rep Rows 5 and 6 another 24 times.
- Rows 55 to 58** Work in garter st.
- Cast off.**

**SNOWMAN SQUARE (MAKE 1)**

- Cast on** 45 sts using 4mm needles and Yarn H.
- Rows 1 to 4** Work in garter st.
- Row 5** Knit.
- Row 6** K3, purl to last 3 sts, K3. Rep Rows 5 and 6 another 5 times. Change to Yarn A and rep Rows 5 and 6 another 19 times.
- Rows 55 to 58** Work in garter st.
- Cast off.**

**FINISHING**

Block all squares gently, following any instructions on the ball band.

**SWISS DARNING SQUARE 1**

Swiss darn Chart 1 motif on Yarn B square.

**SQUARE 2**

Swiss darn Chart 2 motif on Yarn A square.

**SQUARE 3**

Swiss darn Chart 3 motif on Yarn D square

**SQUARE 4**

Swiss darn Chart 4 motif on Yarn B square.

**SQUARE 5**

Swiss darn Chart 5 motif on Yarn D square.

**SQUARE 6**

Swiss darn Chart 6 motif on Snowman square.

**SQUARE 7**

Swiss darn Chart 7 motif on Yarn C square.

**SQUARE 8**

Swiss darn Chart 8 motif on Yarn C square. 

**FANCY A KNIT-ALONG YARN PACK?**

Fed up of hunting down the yarn to knit that favourite item? Then you're in luck! Wool Warehouse are offering a yarn pack filled with all the yarn you need to knit Angela Turner's blanket. With a few clicks your treasured package could be winging its way to you! For details call Wool Warehouse on 0800 505 3300.



CHART 1

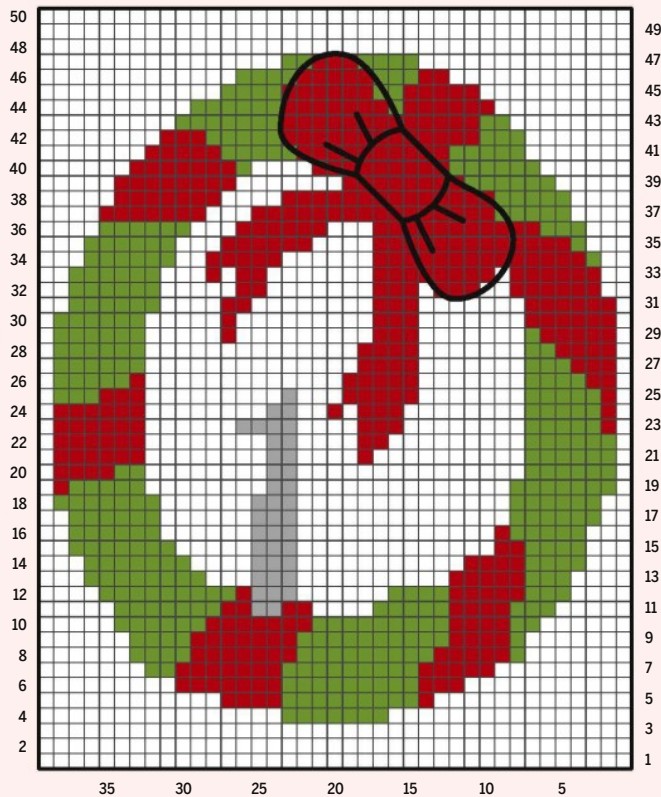


CHART 2

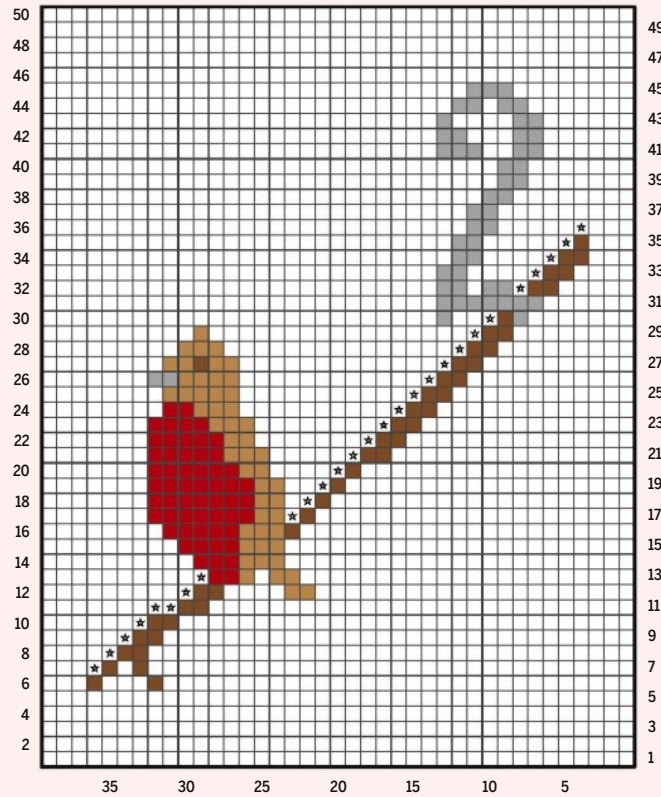


CHART 3

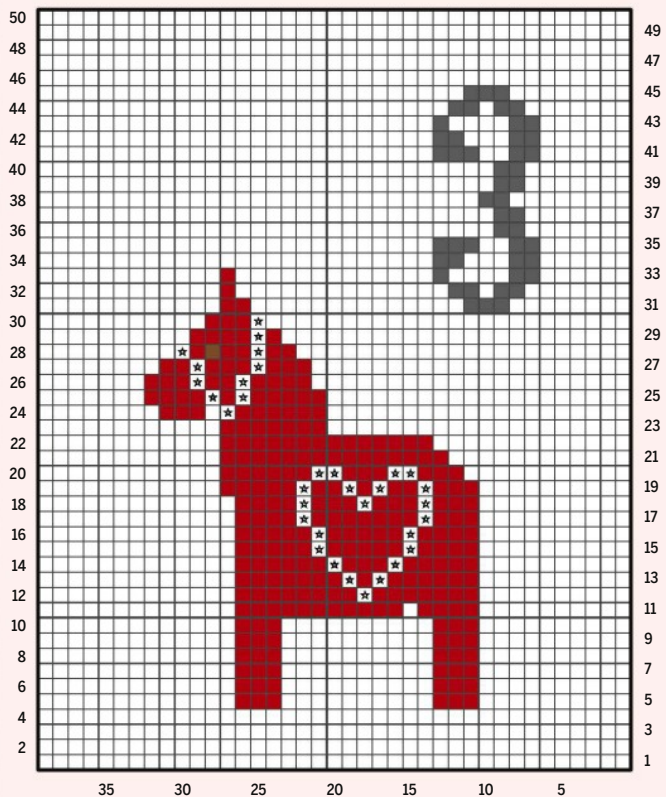
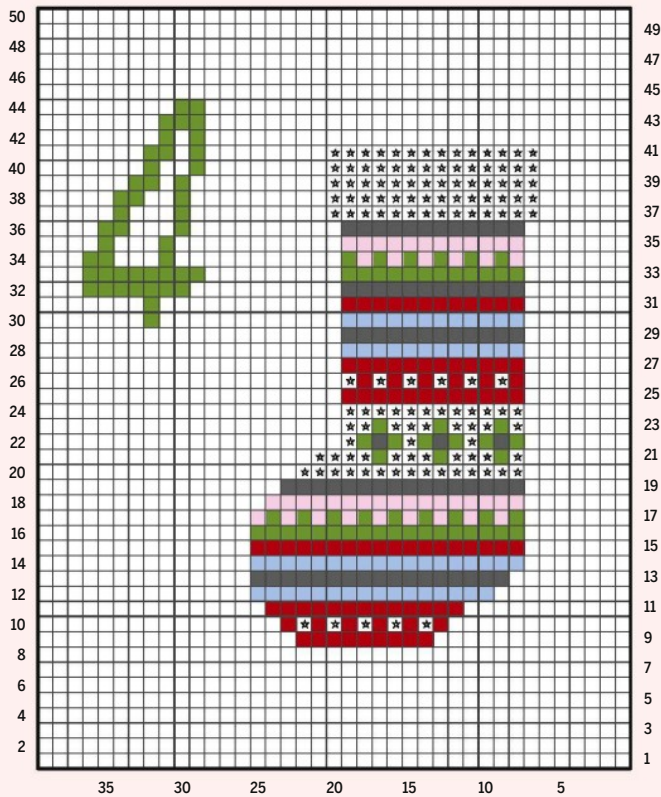


CHART 4







**CATCH ALL OF  
OUR KAL PARTS!**

Find Angela Turner's festive blanket KAL in issues 255, 256 and 257. If you miss any parts order a back issue on p72, by visiting [www.ourmediashop.com/knitting-back-issues](http://www.ourmediashop.com/knitting-back-issues) or by calling 03330 162147.

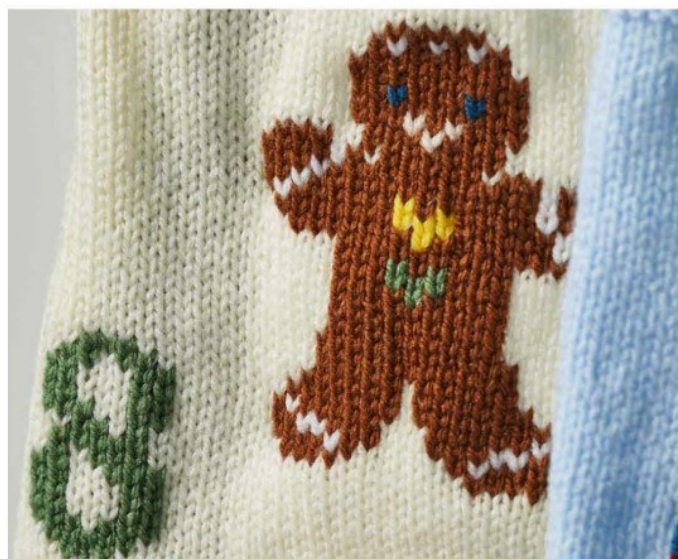




CHART 5

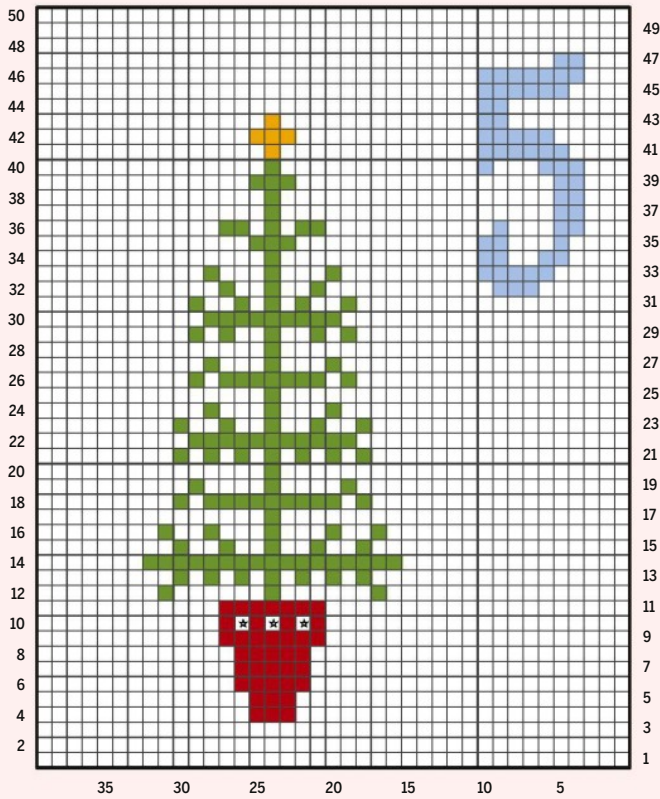


CHART 6

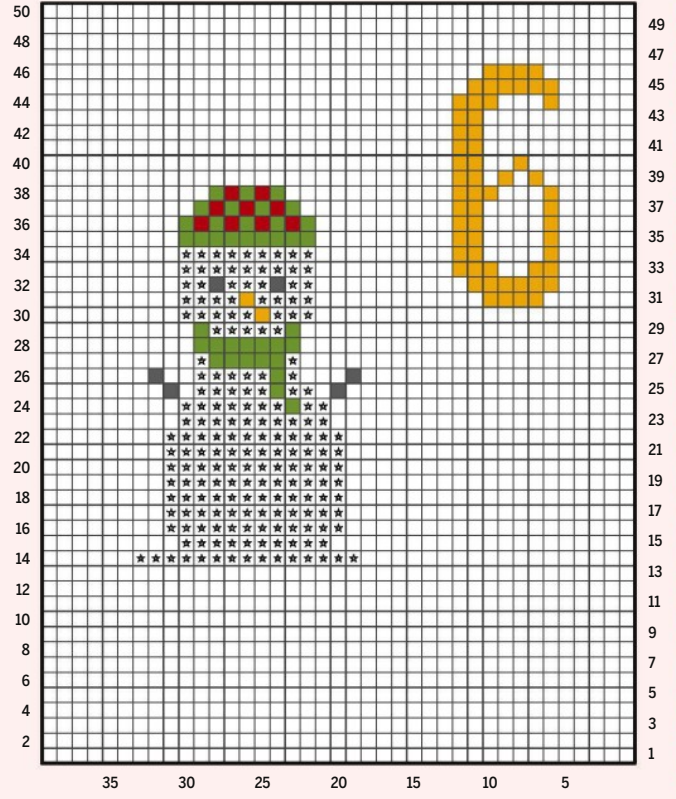


CHART 7

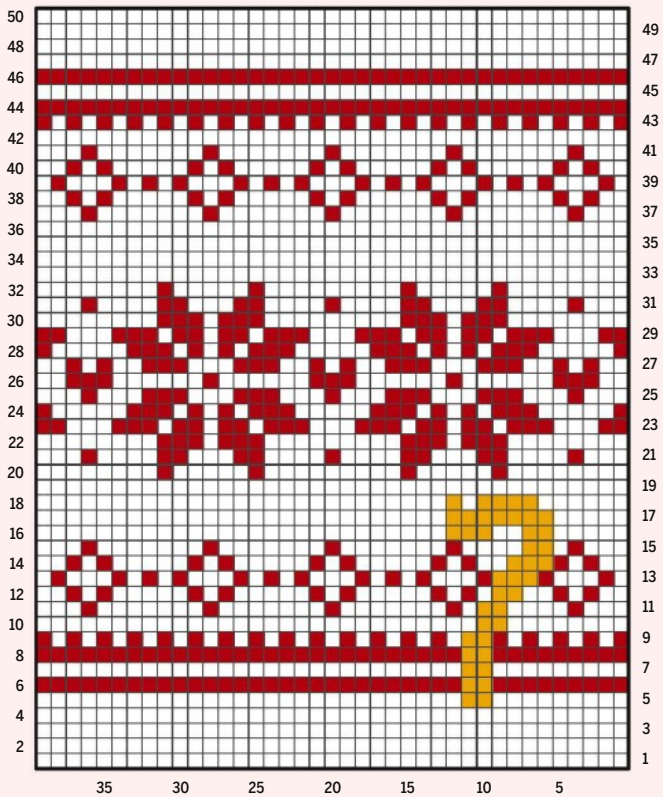


CHART 8



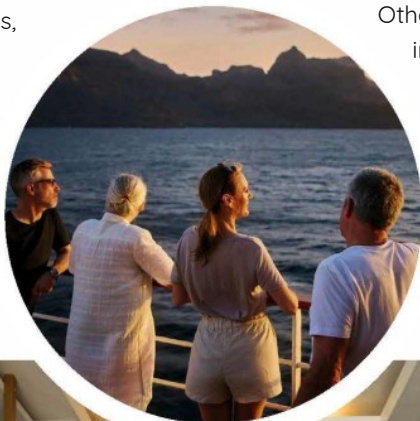
# Cruises with a difference

Enjoy unbeatable value from Ambassador Cruise Line, whose no-fly cruises from the UK offer affordable quality and the warmest of welcomes from the friendliest of crews

**A**mbassador Cruise Line is your way to experience great value cruises without compromising quality. With a range of inspiring destinations combined with unbeatable value, Ambassador Cruise Line promises you a holiday you won't ever forget.

## A new kind of cruise line

Founded in 2019, Ambassador Cruise Line has two adult-only ships in its fleet: Ambience and Ambition. And with Ambassador's ships sailing from eight departure ports across the UK, you can avoid the stress of long transfers or flights, and start your much-deserved holiday even sooner. Once on board, you'll enjoy the warmest welcome at sea, accompanied by exceptional



service, a great range of outstanding dining options and amazing entertainment, including quizzes, crafting, plays, cabaret, West End-style shows and much more. You'll use pounds sterling, so you don't have to worry about fluctuating exchange rates. Ambassador knows it has a responsibility to protect both our oceans and the destinations it visits, and so is on a mission to be among the most sustainable cruise lines, even down to the dresses worn by the entertainment team, which are made from 100% recycled plastic.

Other initiatives to date include partnerships with charitable bodies, energy-efficient engines and, where possible, using locally sourced ingredients for on-board dining.





‘Destinations range from a cruise around the British Isles to 40+ nights around the Caribbean Islands’

**An inspiring range of destinations**

Ambassador Cruise Line has a fantastic range of itineraries available. If you’re looking to keep it local, you’ll find a selection of cruises travelling around Britain and Ireland. For those seeking adventure further afield, there’s an enticing range of cruises exploring Europe, from journeys in the Mediterranean to trips around Iceland, Norway and Sweden. Or, for the ultimate cruise, check out Cuba & Treasures of the West Indies that lasts for 45 nights. As well as a range of destinations, Ambassador Cruise Line also offers themed cruises that allow you to explore your interests and hobbies, with amazing guests, hosts and experts. Being mid-sized ships, Ambience and Ambition are able to visit ports that larger ships cannot reach, giving guests opportunity to explore destinations that other cruisers will miss.

**Your exclusive offer**

As a special offer for Simply Knitting readers, Ambassador Cruise Line is offering an exclusive 5% bonus discount on top of any of its current deals and offers. Find out more today.

**SAVE 5% WITH SIMPLY KNITTING**  
You can save 5% when booking a holiday with Ambassador Cruise Line.  
Use Promo Code **KNITTING5**  
Visit [ambassadorcruiseline.com](http://ambassadorcruiseline.com) or call **0808 258 5643**.



**THREE POPULAR CRUISE DESTINATIONS**

**CANARIES, CAPE VERDE & MOROCCO**

This 23-night Mediterranean voyage provides a dose of sunshine and balmy temperatures – all while visiting some of the most unspoilt destinations on the planet. After calling at Vigo, you’ll hop around the sun-soaked Canaries, followed by Casablanca, from where you can reach medieval Marrakech and its maze-like souks, finishing in Tangier, where ancient history meets vibrant Moroccan culture.



**UK, IRELAND & FRANCE DISCOVERY**

Discover the wealth of history and breathtaking beauty close to home as you embark on this 12-night sailing. Departing from Liverpool, you’ll cruise to the historic Isle of Man’s Douglas. Then on to Londonderry and Ringaskiddy, before exploring the picturesque St. Peter Port in Guernsey. Continuing across the Channel to Honfleur and the seaside city of Cherbourg with a final voyage to Plymouth.



**FJORDLAND**

On Ambassador’s seven nighters to Norway’s fantastic fjords – departing from London, Newcastle, Dundee or Bristol – you’ll sail along mirror-calm waters, calling at picture-perfect ports as you soak up some of Europe’s most spectacular scenery. The Fjordland cruises can take you through majestic fjords such as Sognefjord, Norway’s longest and deepest fjord or Geirangerfjord, a UNESCO World Heritage Site.





### HOBBII TOUCAN

Toucan is a soft, luxurious chenille made from 100% polyester which has a plush feel and is easy to care for. Perfect for many projects, it works up quickly on 6mm needles. Its vibrant shades are reminiscent of tropical birds, making it ideal for blankets, toys and more. The yarn's thickness creates a lush, dense fabric using simple stitches. Tie a small knot in any ends to secure it.

**RRP** £7 **WEIGHT** Super chunky  
**BALL** 100g/120m **NEEDLE** 6mm  
**CONTENT** 100% polyester  
**CARE** Machine wash at 40°C, dry flat  
[www.hobbii.co.uk](http://www.hobbii.co.uk)



### RICO FASHION LIGHT LUXURY HAND DYED

Introducing cosy, luxurious Fashion Light Luxury yarn from Rico, now available in a stunning hand-dyed version. Each skein comes in beautifully harmonious colour combinations, perfect for adding a modern touch to your projects. With five trendy shades, and its soft and fluffy chunky weight you'll quickly create something unique for your home or wardrobe with this fun yarn.

**RRP** £12 **WEIGHT** Chunky  
**BALL** 50g/130m **NEEDLE** 6-7mm  
**CONTENT** 74% alpaca, 22% wool, 4% nylon **CARE** Hand wash, dry flat  
 For stockists [www.rico-design.de/en](http://www.rico-design.de/en)



### STYLECRAFT SQUEEZE ME DK

Stylecraft's new Squeeze Me is a luxurious chenille that's irresistibly soft and perfect for snuggly creations. With 20 colours, it caters to all tastes, from serene neutrals and calming pastels to vibrant, lively hues. This velvety yarn is perfect for those seeking a touchable, huggable texture. Whether you're aiming for a sophisticated or playful look, Squeeze Me offers a rich palette.

**RRP** £3.79 **WEIGHT** DK  
**BALL** 100g/200m **NEEDLE** 4mm  
**CONTENT** 100% polyester **CARE** Machine wash at 30°C, cool tumble dry  
 For stockists [www.stylecraft-yarns.co.uk](http://www.stylecraft-yarns.co.uk)



# Soft to the touch

Discover the cosiest yarns for your projects, with our yarn reviews focusing on texture, quality and snugliness



### MODE AT ROWAN ALPACA HAZE

Hot off the press is Alpaca Haze from Mode at Rowan. An impressive featherlight yarn, it's made from 58% alpaca and 22% wool, so it's a wonderfully luxurious looking and feeling addition to your knitting stash. We love that it comes in a range of soft, subtle hues designed to compliment the base tones of your wardrobe and home décor.

**RRP** £5.95 **WEIGHT** 25g  
**BALL** 25g/212m **NEEDLE** 3.25-5mm  
**CONTENT** 58% alpaca, 22% wool, 20% polyamide **CARE** Handwash  
[www.knitrowan.com](http://www.knitrowan.com)



### CYGNET JELLYBABY CHUNKY CHENILLE

This yarn is an absolute delight! It's wonderfully soft and chunky, making it perfect for a variety of projects from garments to homewares. The shade range has everything from soft pastels to vibrant brights. It's especially great for toy making, plushies, and amigurumi. Plus, it's Oeko-Tex certified, so you can feel good about using it.

**RRP** £3.99 **WEIGHT** Chunky  
**BALL** 100g/120m **NEEDLE** 6-6.5mm  
**CONTENT** 100% polyester **CARE** Machine wash at 40°C  
 For stockists [www.cygnetyarns.com](http://www.cygnetyarns.com)



### WOOL AND THE GANG TAKE CARE MOHAIR

Take Care Mohair is a versatile treat, keeping you warm in winter and cool in summer. It's sourced from a South African region with a 200-year goat farming tradition. Plus, it's RMS certified, which guarantees responsible mohair production, excellent animal welfare and sustainable land management, with the yarn being tracked from farm to final product.

**RRP** £14 **WEIGHT** Aran  
**BALL** 50g/100m **NEEDLE** 6.5-15mm  
**CONTENT** 78% kid mohair, 13% wool, 9% polyamide **CARE** Hand wash cold, dry flat  
[www.woolandthegang.com](http://www.woolandthegang.com)



**NEW** *from*  
**ROWAN**  
EST 1978

# LATE SUMMER

Slip into this colourful stripy cardigan knitted in a palette of cool cotton yarns – it's the ultimate in wraparound elegance. By **Lisa Richardson**

# \* COLOURWORK CARDIGAN



## TAKE ON A CHALLENGE

### YOU WILL NEED

- Rowan Summerlite 4ply (100% cotton, 100g/175m)

For yarn quantities and measurements see size table

- A pair of 2.75mm needles
- A pair of 3mm needles
- A pair of 3.25mm needles
- A set of 2.75mm circular needles at least 120cm long
- 4 buttons, 23mm diameter (TGB4837 from Textile Garden)

### TENSION

29 sts and 50 rows to measure 10x10cm (4x4in) over patt using a combination of 3mm and 3.25mm needles

### ABBREVIATIONS

**wyaf** (with yarn at front of work)  
This is RS on RS rows, and WS on WS rows

**wyab** (with yarn at back of work)  
This is WS on RS rows, and RS on WS rows

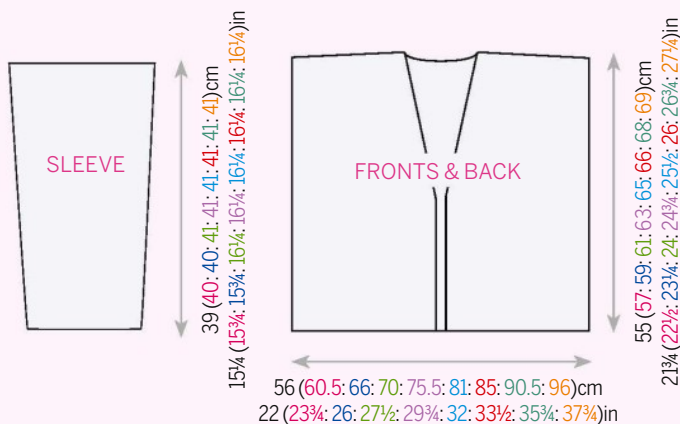
For a full list see page 79

### WHERE TO BUY

- For yarn stockists contact Rowan on 01924 371501 or [www.knitrowan.com](http://www.knitrowan.com)

### OR YOU COULD TRY...

- Black Sheep Wools 01925 764231 or [www.blacksheepwools.com](http://www.blacksheepwools.com)
- Wee County Yarns 01259 301006 or [www.wee-county-yarns.co.uk](http://www.wee-county-yarns.co.uk)



10% off!

Black Sheep Wools are offering 10% off Rowan Summerlite 4ply! Quote code ROW255 when you order on 01925 764231 or by visiting [www.blacksheepwools.com](http://www.blacksheepwools.com). Offer ends 16 Oct 2024.



*"This 4ply cotton yarn has a lovely matt finish which complements the texture of this easy-fit design perfectly. I'll be wearing this pretty cardi right through the season."*

NICOLA LYNN, ART EDITOR

## COLOURWORK CARDIGAN BACK

Cast on 165 (177: 189: 201: 219: 237: 249: 261: 279) sts using 2.75mm needles and Yarn B.

**Row 1 (RS)** K3, \*P3, K3, rep from \* to end.

**Row 2** P3, \*K3, P3, rep from \* to end.

These 2 rows form rib.

Cont in rib until Back meas 6cm, dec (dec: inc: inc: -: dec: dec: inc: -) 1 st at each end of last row and ending with RS facing for next row. [163 (175: 191: 203: 219: 235: 247: 263: 279) sts]

Joining in and breaking off colours as required, now work in patt as folls:

Change to 3.25mm needles.

**Row 1 (RS)** Using Yarn A, knit.

**Row 2** Using Yarn A, purl.

**Row 3** Using Yarn B, K2, \*sl1 wyab, K1, rep from \* to last st, K1.

**Row 4** Using Yarn B, K2, \*sl1 wyaf, P1, sl 1 wyaf, K1, rep from \* to last st, K1.

**Row 5** Using Yarn A, K3, \*sl1 wyab, K3, rep from \* to end.

**Row 6** Using Yarn A, P3, \*sl1 wyaf, P3, rep from \* to end.

**Row 7** Using Yarn B, K1, \*sl1 wyab, K3, rep from \* to last 2 sts, sl1 wyab, K1.

**Row 8** Using Yarn B, K1, \*sl1 wyaf, K3, rep from \* to last 2 sts, sl1 wyaf, K1.

**FIND YOUR SIZE**

SIZE		4-6	8-10	12-14	16-18	20-22	24-26	28-30	32-34	36-38
TO FIT BUST	cm	71-76	81-86	91-97	102-107	112-117	122-127	132-137	142-147	152-157
	in	28-30	32-34	36-38	40-42	44-46	48-50	52-54	56-58	60-62
ACTUAL BUST	cm	112.5	120.5	131.5	140	151	162	170.5	181.5	192.5
	in	44½	47½	51¾	55	59½	63¾	67¾	71½	75¾
LENGTH	cm	55	57	59	61	63	65	66	68	69
	in	21¾	22½	23¾	24	24¾	25½	26	26¾	27¾
SLEEVE LENGTH	cm	39	40	40	41	41	41	41	41	41
	in	15¾	15¾	15¾	16¼	16¼	16¼	16¼	16¼	16¼
YARN		Rowan Summerlite 4ply (50g/175m)								
Yarn A Mint (451)		3	3	3	3	4	4	4	5	5
Yarn B Pinched Pink (426)		3	4	4	4	5	5	6	6	6
Yarn C Aubergine (432)		2	2	2	3	3	3	3	3	4
Yarn D Ecru (436)		2	2	2	2	2	3	3	3	3

**SIZING COLOUR KEY** So you can re-use this pattern, we've colour-coded the sizing instructions. Simply follow our colour-coded measurements and you're off



**Row 9** Using Yarn A, K2, \*sl1 wyab, K1, rep from \* to last st, K1.  
**Row 10** Using Yarn A, P2, \*sl1 wyaf, P1, rep from \* to last st, P1.  
**Row 11** Using Yarn B, K3, \*sl1 wyab, K3, rep from \* to end.  
**Row 12** Using Yarn B, K3, \*sl1 wyaf, K3, rep from \* to end.  
**Row 13** Using Yarn A, K1, \*sl1 wyab, K3, rep from \* to last 2 sts, sl1 wyab, K1.  
**Row 14** Using Yarn A, P1, \*sl1 wyaf, P3, rep from \* to last 2 sts, sl1 wyaf, P1.  
**Rows 15 and 16** As Rows 11 and 12.  
**Row 17** Using Yarn A, K2, \*sl1 wyab, K1, rep from \* to last st, K1.  
**Row 18** Using Yarn A, K2, \*sl1 wyaf, P1, sl 1 wyaf, K1, rep from \* to last st, K1.  
**Rows 19 and 20** As Rows 11 and 12.  
**Rows 21 and 22** As Rows 13 and 14.

Change to 3mm needles.  
**Rows 23 and 24** Using Yarn A, knit.  
**Rows 25 and 26** Using Yarn C, knit.  
**Rows 27 and 28** Using Yarn A, knit.  
**Rows 29 and 30** Using Yarn C, knit.  
**Rows 31 and 32** Using Yarn A, knit.

Change to 3.25mm needles.  
**Row 33** Using Yarn D, knit.  
**Row 34** Using Yarn D, purl.  
**Row 35** Using Yarn C, K3, \*sl1 wyab, K3, rep from \* to end.  
**Row 36** Using Yarn C, K3, \*sl1 wyaf, K3, rep from \* to end.  
**Row 37** Using Yarn A, K1, \*sl1 wyab, K3, rep from \* to last 2 sts, sl 1 wyab, K1.  
**Row 38** Using Yarn A, K1, \*sl1 wyaf, K3, rep from \* to last 2 sts, sl 1 wyaf, K1.  
**Row 39** Using Yarn D, K3, \*sl1 wyab, K3, rep from \* to end.  
**Row 40** Using Yarn D, P1, K1, P1, \*sl1 wyaf, P1, K1, P1, rep from \* to end.  
**Rows 41 and 42** As Rows 33 and 34 but using Yarn C.  
**Rows 43 and 44** As Rows 35 and 36 but using Yarn A.

**Rows 45 and 46** As Rows 37 and 38 but using Yarn D.  
**Rows 47 and 48** As Rows 39 and 40 but using Yarn C.  
**Rows 49 and 50** As Rows 33 and 34 but using Yarn A.  
**Rows 51 and 52** As Rows 35 and 36 but using Yarn D.  
**Rows 53 and 54** As Rows 37 and 38 but using Yarn C.  
**Rows 55 and 56** As Rows 39 and 40 but using Yarn A.

Change to 3mm needles.  
**Rows 57 and 58** Using Yarn D, knit.  
**Rows 59 and 60** Using Yarn B, knit.  
**Rows 61 and 62** Using Yarn D, knit.  
**Rows 63 and 64** Using Yarn B, knit.  
**Rows 65 and 66** Using Yarn D, knit.

Change to 3.25mm needles.  
**Rows 67 to 88** As Rows 1 to 22 but using Yarn B in place of Yarn A, and Yarn C in place of Yarn B.

Change to 3mm needles.  
**Rows 89 and 90** Using Yarn C, knit.  
**Rows 91 and 92** Using Yarn A, knit.  
**Rows 93 and 94** Using Yarn C, knit.  
**Rows 95 and 96** Using Yarn A, knit.  
**Rows 97 and 98** Using Yarn C, knit.

Change to 3.25mm needles.  
**Rows 99 to 122** As Rows 33 to 56 but using Yarn A in place of yarn D, D in place of Yarn C, and Yarn B in place of Yarn A.

Change to 3mm needles.  
**Rows 123 and 124** Using Yarn D, knit.  
**Rows 125 and 126** Using Yarn B, knit.  
**Rows 127 and 128** Using Yarn D, knit.  
**Rows 129 and 130** Using Yarn B, knit.  
**Rows 131 and 132** Using Yarn D, knit.  
 These 132 rows form patt.



Remembering to change needle size between each band as stated, cont in patt as folls:  
Cont straight until Back meas 49 (51: 53: 55: 57: 59: 60: 62: 63)cm, ending with RS facing for next row.

### SHAPE SHOULDERS

Keeping patt correct, **cast off** 4 (4: 4: 5: 5: 6: 6: 7: 7) sts at beg of next 18 (18: 6: 18: 10: 18: 16: 18: 14) rows, then – (: 5: : 6: : 7: : 8) sts at beg of foll – (: 12: : 8: : 2: : 4) rows.  
[91 (103: 107: 113: 121: 127: 137: 137: 149) sts]

### SHAPE BACK NECK

**Next row (RS) Cast off** 4 (4: 5: 5: 6: 6: 7: 7: 8) sts, patt until there are 26 (30: 31: 33: 36: 37: 41: 41: 46) sts on right needle and turn, leaving rem sts on a holder.

Work each side of neck separately.

Keeping patt correct, dec 1 st at neck edge of next 4 rows, then on foll 2 alt rows and at same time **cast off** 4 (4: 5: 5: 6: 6: 7: 7: 8) sts at beg of 2nd and foll 3 (0: 3: 2: 3: 3: 3: 3) alt rows, then – (5: : 6: : : : :) sts at beg of foll – (3: : 1: : : : :) alt rows.

Work 1 row.

**Cast off** rem 4 (5: 5: 6: 6: 7: 7: 8) sts.

With RS facing, slip centre 31 (35: 35: 37: 37: 41: 41: 41: 41) sts onto a holder (for front band), rejoin appropriate yarns and patt to end. Complete to match first side, reversing shapings.

### LEFT FRONT

**Cast on** 76 (82: 94: 94: 106: 112: 118: 130: 136) sts using 2.75mm needles and Yarn B.

**Row 1 (RS)** K3, \*P3, K3, rep from \* to last st, K1.

**Row 2** K1, P3, \*K3, P3, rep from \* to end.

These 2 rows form rib.

Cont in rib until left front meas 6cm, ending with WS facing for next row.

**Next row (WS)** Rib 12 (9: 47: 11: 53: 18: 11: 65: 22), M1, (rib 26 (16: : 18: : 38: 24: : 46), M1) 2 (4: 0: 4: 0: 2: 4: 0: 2) times, rib 12 (9: 47: 11: 53: 18: 11: 65: 22). [79 (87: 95: 99: 107: 115: 123: 131: 139) sts]

Joining in and breaking off colours as required, now work in patt as given for back and cont as folls:

Cont straight until 120 (120: 120: 124: 124: 128: 128: 128: 132) rows less have been worked than on back to beg of shoulder shaping, ending with RS facing for next row.

### SHAPE FRONT SLOPE

Keeping patt correct, dec 1 st at end of next and 1 (17: 17: 11: 11: 17: 21: 21: 21) foll 6th rows, then on 14 (2: 2: 7: 7: 3: 0: 0: 0) foll 8th rows.

## STEP-BY-STEP M1 MAKE 1 INCREASE



**1** Insert the point of the right-hand needle under the loop or line of yarn that lies between the two stitches.



**2** Next slip the yarn back on to the left-hand needle, ready for knitting.



**3** Insert the point of the right-hand needle into the back of the stitch as if to knit.



**4** Pull the yarn all the way through and you will now have an extra stitch on your right-hand needle.



[63 (67: 75: 80: 88: 94: 101: 109: 117) sts]

Work 1 (1: 1: 1: 1: 1: 1: 1: 5) rows, ending with RS facing for next row.

## SHAPE SHOULDER

Keeping patt correct, **cast off** 4 (4: 4: 5: 5: 6: 6: 7: 7) sts at beg of next and foll 13 (10: 2: 12: 4: 13: 7: 13: 6) alt rows, then – (5: 5: 6: 6: -: 7: -: 8) sts at beg of foll – (3: 11: 1: 9: -: 6: -: 7) alt rows and at same time dec 1 st at front slope edge of 7th (7th: 7th: 7th: 7th: 7th: 5th: 5th: next) and 0 (0: 0: 0: 0: 0: 3: 3: 1) foll 6th rows, then on 2 (2: 2: 2: 2: 0: 0: 2) foll 8th rows.

Work 1 row.

**Cast off** rem 4 (5: 5: 6: 6: 7: 7: 8) sts.

## RIGHT FRONT

**Cast on** 76 (82: 94: 94: 106: 112: 118: 130: 136) sts using 2.75mm needles and Yarn B.

**Row 1** (RS) K4, \*P3, K3, rep from \* to end.

**Row 2** P3, \*K3, P3, rep from \* to last st, K1.

These 2 rows form rib.

Complete to match left front, reversing shapings.

## SLEEVES

**Cast on** 51 (57: 57: 63: 63: 63: 63: 69: 69) sts using 2.75mm needles and Yarn B.

Work in rib as given for Back for 4.5cm, ending with WS facing for next row.

**Next row** (WS) Rib 3 (2: 3: 4: 4: 1: 1: 2: 2), M1, (rib 3 (4: 3: 5: 5: 4: 4: 5: 5), M1) 15 (13: 17: 11: 11: 15: 15: 13: 13) times, rib 3 (3: 3: 4: 4: 2: 2: 2: 2). [67 (71: 75: 75: 75: 79: 79: 83: 83) sts]

Joining in and breaking off colours as required, now work in patt as given for back and cont as folls:

Inc 1 st at each end of 7th (7th: 5th: 5th: 3rd: 3rd: 3rd: 3rd: 3rd) and every foll 8th (8th: 6th: 6th: 4th: 4th: 4th: 4th: 4th) row to 89 (99: 91: 117: 91: 113: 125: 135: 153) sts, then on every foll 10th (10th: 8th: 8th: 6th: 6th: 6th: 6th: 6th) row until there are 101 (107: 117: 125: 133: 143: 147: 153: 159) sts, taking inc sts into patt.

Cont straight until Sleeve meas 39 (40: 40: 41: 41: 41: 41: 41: 41)cm, ending with RS facing for next row.

**Cast off.**

## MAKING UP

Block pieces gently, following any instructions on the ball band. Join both shoulder seams using mattress stitch, or backstitch if preferred.

## FRONT BAND

With RS facing, using 2.75mm circular needle and Yarn B, beg and ending at front cast-on edges, pick up and knit 70 (76: 81: 85: 90: 94: 96: 102: 103) sts up right front opening edge to beg of front slope shaping, then 100 (101: 102: 103: 104: 107: 105: 105: 110) sts up right front slope to shoulder seam, and 6 sts down right side of back neck, K across 31 (35: 35: 37: 37: 41: 41: 41: 41) sts on back holder, pick up and knit 6 sts up left side of back neck, 100 (101: 102: 103: 104: 107: 105: 105: 110) sts up down left slope to beg of front slope shaping, then 70 (76: 81: 85: 90: 94: 96: 102: 103) sts down left front opening edge.

[383 (401: 413: 425: 437: 455: 455: 467: 479) sts]

**Row 1** (WS) K1, \*P3, K3, rep from \* to last 4 sts, P3, K1.

**Row 2** K4, \*P3, K3, rep from \* to last st, K1.

These 2 rows form rib.

Work in rib for a further 3 rows, ending with RS facing for next row.

**Row 6** (RS) Rib 8 (8: 9: 8: 9: 8: 9: 9: 8), \***cast off** 3 sts (to make a



buttonhole – **cast on** 3 sts over these cast-off sts on next row), rib until there are 16 (18: 19: 21: 22: 24: 24: 26: 27) sts on right needle after cast-off, rep from \* twice more, **cast off** 3 sts (to make 4th buttonhole – **cast on** 3 sts over these cast-off sts on next row), rib to end.

Work in rib for a further 7 rows, ending with RS facing for next row. **Cast off** in rib.

Mark points along side seam edges 18 (19: 20.5: 22: 23.5: 25: 26: 27: 28) cm either side of shoulder seams (to denote base of armhole openings). Place centre of cast-off edge of sleeve to shoulder seam. Sew top of sleeve to body, using markers as a guide. Join side and sleeve seams. Sew on buttons to correspond with buttonholes..

# The Knitter

## 3 ISSUES FOR £6

when you subscribe today



## SUBSCRIBE TODAY!

Visit [www.ourmediashop.com/TKHA24](http://www.ourmediashop.com/TKHA24)

or call **03330 162 146**<sup>†</sup> QUOTE PROMO CODE TKHA24

<sup>†</sup> UK calls will cost the same as other standard fixed line numbers (starting 01 or 02) and are included as part of any inclusive or free minutes allowances (if offered by your phone tariff). Outside of free call packages call charges from mobile phones will cost between 3p and 55p per minute. Lines are open Mon to Fri 9am – 5pm for orders and enquiries.

[www.gathered.how/theknitter](http://www.gathered.how/theknitter) [f TheKnitterMag](https://www.facebook.com/TheKnitterMag) [i TheKnitterMag](https://www.instagram.com/TheKnitterMag)

**Terms & conditions:** This trial offer is for new print subscribers only subscribing by Direct Debit. You will receive 3 issues for £6 and then continue on a 6 issue Direct Debit of £29.99 thereafter. Full details of the Direct Debit guarantee are available on request. Prices correct at point of print and subject to change. Offer ends 31st December 2024.

# SWEET APPLES

Appliqué shapes turn a simple boat-neck jumper into a knit with additional charm. By **Amy Philip**

Give  
*appliqué*  
a go!



# \* KIDS' APPLE JUMPER



## IMPROVE YOUR SKILLS

### YOU WILL NEED

- Scheepjes Terrazzo (70% recycled wool, 30% viscose, 50g/175m)  
*For yarn quantities and measurements see size table*
- A set of 3.25mm needles suitable for working flat and in the round
- A set of 4mm needles suitable for working flat and in the round
- A set of 4mm double-pointed needles (DPNs)
- 4 stitch markers
- 1 round marker
- 2 stitch holders

- A crochet hook (any size between 3mm and 4mm is suitable)
- Tapestry needle
- Approx 127cm each of brown and green yarn
- 1 button, approx 1cm diameter

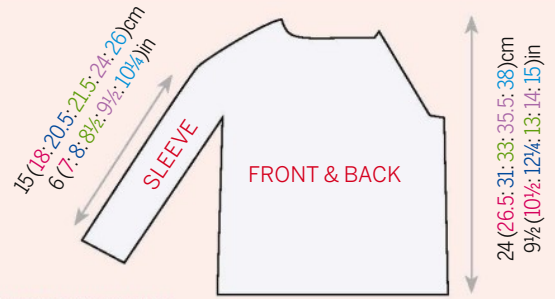
### TENSION

22 sts and 30 rows to measure 10x10cm (4x4in) over st st using 4mm needles

### ABBREVIATIONS

**M1L** (left leaning increase) with left needle tip, lift strand between needles from front to back. Knit lifted loop through back of loop.  
**M1R** (right leaning increase) with left needle tip, lift strand between needles from back to front. Knit lifted loop through front of loop

For a full list see page 79



### WHERE TO BUY

For yarn stockists contact Scheepjes [www.scheepjesyarn.com](http://www.scheepjesyarn.com)

### OR YOU COULD TRY...

- Yarn Etc 01423 885565 or [www.yarnetc.co.uk](http://www.yarnetc.co.uk)
- Wool Warehouse 01926 882818 or [www.woolwarehouse.co.uk](http://www.woolwarehouse.co.uk)



## KIDS' JUMPER YOKE

**Cast on** 70 (74: 76: 78: 80) sts using 3.25mm needles using long tail method and Yarn A. Do not join to work in round.

**Row 1** (K1 tbl, P1 tbl) to end.  
Rep Row 1 a further 4 times.

Change to 4mm needles and cont for raglan shaping, beg with a WS row, as foll:

**Set-up row** P14 (15: 15: 15: 15: 15) sts for left back, PM, P7 (7: 8: 9: 9: 10) for left sleeve, PM, P28 (30: 30: 30: 30: 30) sts for front, PM, P7 (7: 8: 9: 9: 10) for right sleeve, PM, P14 (15: 15: 15: 15: 15) sts for right back.

**Row 1** (RS) (K to marker, M1R, SM, K1, M1L) four times, K to end. 8 sts inc. [78 (82: 84: 86: 86: 88) sts]



**Row 2** (WS) P to end.

Rep Rows 1 and 2 a further 3 times.  
[102 (106: 108: 110: 112) sts]

Join for working in round being careful not to twist sts. PM at beg of round and cont raglan shaping in st st in the round (every round K) as foll:

**Round 1** (K to marker, M1R, SM, K1, M1L) four times, K to end. 8 sts inc. [110 (114: 116: 118: 118: 120) sts]

**Round 2** K to end.

Rep Rounds 1 and 2 a further 5 (6: 8: 10: 11: 13) times.  
[150 (162: 180: 198: 206: 224) sts]

Work raglan inc on sleeves as foll:

**Round 1** (K to marker, sISM, K1, M1L, k to marker, M1R, sISM) twice, k to end. 4 sts inc, 2 on each sleeve.

[154 (166: 184: 202: 210: 228) sts]

**Round 2** K to end.

Rep Rounds 1 and 2 a further 3 (3: 2: 2: 2: 2) times.

[166 (178: 192: 210: 218: 236) sts]

### DIVIDE FOR SLEEVES AND BODY

**Next row** Remove round marker, K to marker, remove marker, K1, place next 34 (36: 39: 44: 46: 51) sts on hold for first sleeve, remove marker, **cast on** 4 sts using backward loop method, K to marker, remove marker, K1, place next 34 (36: 39: 44: 46: 51) sts on hold for second sleeve, **cast on** 4 sts using backward loop method, PM for new beg of round. [106 (114: 122: 130: 134: 142) sts]

### BODY

Cont straight in st st (every round K) until work measures 14 (15: 16.5: 18: 20: 21.5)cm from cast-on edge, measured from centre front.

### INNER POCKETS

K53 (57: 61: 65: 67: 71) sts for back, K8 (8: 9: 9: 10: 10) sts, K12 (14: 15: 16: 16: 17) sts onto 4mm DPNs for first pocket, turn. Cont working back and forth in st st (alt P and K rows) over 12 (14: 15: 16: 16: 17) pocket sts till pocket measures 11.5 (12: 13.5: 14: 14.5: 15)cm, ending with a P row. K12 (14: 15: 16: 16: 17) pocket sts back onto regular needles, ending with working yarn positioned to cont working across front body.

**FIND YOUR SIZE**

SIZE		0-3m	3-6m	6-12m	12-18m	18-24m	2-3yrs
TO FIT CHEST	cm	43	46	49	51	53.5	56
	in	17	18	19¼	20	21	22
ACTUAL CHEST	cm	49	52.5	56.5	60	62	65.5
	in	19¼	20¾	22¼	23½	24½	25¾
LENGTH (INCL NECKBAND)	cm	24	26.5	31	33	35.5	38
	in	9½	10½	12¼	13	14	15
SLEEVE LENGTH	cm	15	18	20.5	21.5	24	26
	in	6	7	8	8½	9½	10¼
YARN	Scheepjes Terrazzo (DK, 50g/175m)						
Yarn A Millennio (731)		2	2	2	3	3	3
Yarn B Scarlatto (718)		1	1	1	1	1	1

**SIZING COLOUR KEY** So you can re-use this pattern, we've colour-coded the sizing instructions. Simply follow our colour-coded measurements and you're off



K13 (13: 13: 15: 15: 17) sts across front body, K12 (14: 15: 16: 16: 17) sts onto 4mm DPNs for second pocket, turn.

Cont working back and forth in st st (alt P and K rows) over 12 (14: 15: 16: 16: 17) pocket sts until pocket measures 11.5 (12: 13.5: 14: 14.5: 15)cm, ending with a P row.

K12 (14: 15: 16: 16: 17) pocket sts back onto regular needles, ending with working yarn positioned to cont working across body, K to end of round.

Cont with body as foll:

Cont straight in st st (every round K) until work measures 21.5 (24: 28.5: 30.5: 33: 35.5)cm from cast-on edge, measured from centre-front.

Change to 3.25mm needles.

**Next round** (K1tbl, P1tbl) to end.

Rep prev round until work measures 2.5cm.

**Cast off** all sts loosely in rib stitch.

## SLEEVES

Beg in centre of 4 cast-off sts at first underarm and using 4mm needles, pick up and K2 sts, K across 34 (36: 39: 44: 46: 51) sleeve sts, pick up and K2 sts. [38 (40: 43: 48: 50: 55) sts]

**Round 1** K to end.

**Round 2** (dec) K2, K2tog, K to last 4 sts, ssk, K2. [2 sts dec]

[36 (38: 41: 46: 48: 53) sts]

Rep Round 2 on 2 (2: 3: 5: 5: 7) foll eighth rounds.

[32 (34: 35: 36: 38: 39) sts]

Cont straight in st st (every round K) until sleeve measures 12.5 (15: 18: 19: 21.5: 23.5)cm measured from underarm.

Change to 3.25mm needles.

**Next round** (K1tbl, P1tbl) to end.

Rep prev round until work measures 2.5cm.

**Cast off** all sts loosely in rib stitch.

Rep for second sleeve at second underarm.

## APPLES (MAKE 2)

### SIZES 0-3 MO, 3-6 MO AND 6-12 MO ONLY

**Cast on** 7 sts using long tail method, 3.25mm needles and Yarn B.

**Row 1** K to end.

**Row 2** K1, kfb, k to last 2 sts, kfb, K1. 2 sts inc. [9 sts]

**Row 3** K1, kfb, k to last 2 sts, kfb, K1. 2 sts inc. [11 sts]

**Row 4** K to end.

**Row 5** K1, kfb, k to last 2 sts, kfb, K1. 2 sts inc. [13 sts]

**Row 6** K to end.

**Row 7** K1, kfb, k to last 2 sts, kfb, K1. 2 sts inc. [15 sts]

Cont straight in garter st for a further 12 rows.

## APPLE TOP

**Row 1** K6, cast off 3 sts, K to end.

**Row 2** K6, turn, cont across these 6 sts, leaving rem 6 sts on hold.

**Row 3** K6.

**Row 4** Cast off 1 st, K to end.

**Row 5** Cast off 1 st, K to end. [4 sts]

**Cast off** all sts.

Re-join yarn in centre of apple and work across rem 6 sts.

**Row 1** K6.

**Row 2** Cast off 1 st, K to end.

**Row 3** Cast off 1 st, K to end.



**Row 4 Cast off** 1 st, K to end. [3 sts]  
**Cast off** all sts.

**SIZES 12-18 M; 18-24 M: 2-3YRS ONLY**

**Cast on** 7 sts using long tail method, 3.25mm needles and Yarn B.

**Row 1** K to end.  
**Row 2** K1, kfb, k to last 2 sts, kfb, K1. [2 sts inc: 9 sts]  
**Row 3** K1, kfb, k to last 2 sts, kfb, K1. [2 sts inc: 11 sts]  
**Row 4** K1, kfb, k to last 2 sts, kfb, K1. [2 sts inc: 13 sts]  
**Row 5** K to end.  
**Row 6** K1, kfb, K to last 2 sts, kfb, K1. [2 sts inc: 15 sts]  
**Row 7** K to end.  
**Row 8** K1, kfb, k to last 2 sts, kfb, K1. [2 sts inc: 17 sts]  
 Cont straight in garter st for a further 15 rows.

**APPLE TOP**

**Row 1** K7, **cast off** 3 sts, K to end.  
**Row 2** K7, turn, cont across these 7 sts, leaving rem 7 sts on hold.  
**Row 3** K7.  
**Row 4 Cast off** 1 st, K to end.  
**Row 5 Cast off** 1 st, K to end.  
**Row 6 Cast off** 1 st, K to end. [4 sts]

**Cast off** all sts.  
 Re-join yarn in centre of apple and work across rem 7 sts.  
**Row 1** K7.  
**Row 2 Cast off** 1 st, K to end.  
**Row 3 Cast off** 1 st, K to end.  
**Row 4 Cast off** 1 st, K to end.  
**Row 5 Cast off** 1 st, K to end. [3 sts]  
**Cast off** all sts.

**APPLE STALK**  
**ALL SIZES**

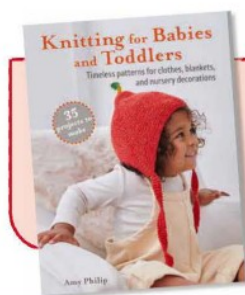
Using 4mm DPNs and 50cm of brown yarn, with RS facing pick up and K3 sts in centre of Apple Top.  
**Row 1** Do not turn work, slide sts to other end of needle, bring working yarn back to beg of work and pull slightly, K to end.  
 Rep Row 1 a further five times.  
 Break yarn, leaving 38cm yarn tail, and thread through 3 sts to fasten off.

**APPLE LEAF**  
**ALL SIZES**

**Cast on** 3 sts using longtail method, 3.25mm needles and 64cm length of green yarn.  
**Row 1** K1, yo, K1, yo, K1. [2 sts inc: 5 sts]  
**Row 2** K to end (K into back of yo sts).  
**Row 3** K to end.  
**Row 4** Ssk, k to last 2 sts, K2tog. [2 sts dec: 3 sts rem]  
**Row 5** K to end.  
**Row 6** Ssk, pass K st over to cast off.  
 Break yarn, leaving 38cm yarn tail.

**FINISHING**

Using B, sew the Apples to the pocket fronts.  
 Using the brown yarn tail, sew the Apple Stalk in place.  
 Sew the Apple Leaf in place using the green yarn tail.  
 Using a crochet hook, crochet a chain loop on one side of the back neck opening. Sew the button onto the other side of the back neck opening to match the loop. Weave in all ends. ●



**BUY THE BOOK!**

This gorgeous pattern comes from the book 'Knitting for Babies and Toddlers' (£14.99) by Amy Philip, published by CICO Books.

**STEP-BY-STEP KFB INCREASE 1 BY KNITTING INTO FRONT & BACK**



**1** Insert the tip of the right-hand needle into the front of the stitch and knit as normal, but don't drop it from the left-hand needle.



**2** Then take the right-hand needle behind the left-hand one and insert the tip of the needle down through the back of the stitch on the left-hand needle.



**3** Wrap the yarn around the tip of the right-hand needle to knit the stitch. Bring the needle through to make the stitch, keeping it on the right-hand needle.



**4** Take the stitch off the left-hand needle. You will have increased one stitch by knitting twice into the original stitch, first at the front, then at the back.



# TAKE A BREAK

Pop the kettle on and take a moment to relax with our puzzles this month – it's just for fun!



## CHILL OUT WITH A CROSSWORD

1		2		3		4		5		6		7		8
9						10								
11				12						13				
14				15				16			17			
18								19					20	
								21						
22		23				24				25		26		
27				28						29				
30								31						

FIND AND UNSCRAMBLE THE KEY WORD!

**ACROSS**

- 1 Down payment (7)
- 5 Spectacles (7)
- 9 Backbone (5)
- 10 Long-running kids TV programme (4,5)
- 11 Substance that is neither solid nor liquid (3)
- 12 Bird of prey (5)
- 13 Air --- One, the US presidential plane (5)
- 14 Spicy tomato dip (5)
- 16 Cylinder of yarn (6)
- 18 Chess piece (6)
- 19 Skewered meat dish (5)
- 22 Man-made polyamide fibre (5)
- 24 Aptitude, talent (5)
- 26 Chair support (3)
- 27 Exclude from a society or group (9)
- 29 Church instrument (5)
- 30 Type of cake icing (7)
- 31 Condition characterised by lack of red blood cells (7)

**DOWN**

- 1 *Grand ---*, TV programme showcasing amazing homes (7)
- 2 Gym shoes (9)
- 3 Utensil for straining (5)
- 4 Trinidad and ---, Caribbean nation (6)
- 5 Measure of the number of stitches in one inch of fabric (5)
- 6 Serpent (3)
- 7 Indian stringed instrument (5)
- 8 Doctor trained to perform operations (7)
- 13 Group of sheep (5)
- 15 Fruit of the oak tree (5)
- 17 Sweet substance for chewing and blowing (6,3)
- 18 Technique for ending a column of stitches - US (4,3)
- 20 Garden plant with brightly coloured flowers (7)
- 21 Device for taking photographs (6)
- 23 Ancient language (5)
- 24 Hard grey rock used in walls (5)
- 25 Variety of Spanish wine (5)
- 28 Country house cooker (3)

## IT'S SUDOKU TIME!

	9		6			2		
					1		9	
6					9		7	5
8			7					
		6	8	2	4	9		
					3			8
7	6		3					2
	4		5					
		3			7		4	

**JOIN THE SK PUZZLE CLUB!**

New puzzles every fortnight! Scan this QR code with your smart phone, or visit [www.gathered.how/puzzles](http://www.gathered.how/puzzles)



4	9	7	6	3	5	2	8	1
3	8	5	2	7	1	6	9	4
6	2	1	4	8	9	3	7	5
8	1	4	7	9	6	5	2	3
5	3	6	8	2	4	9	1	7
9	7	2	1	5	3	4	6	8
7	6	9	3	4	8	1	5	2
1	4	8	5	6	2	7	3	9
1	4	8	5	6	2	7	3	9
2	5	3	9	1	7	8	4	6

**Key word** PUMPKIN

25 Rioja, 28 Aga gum, 18 Bind off, 20 Begonia, 21 Camera, 23 Latin, 24 Flint, 5 Gauge, 6 Asp, 7 Sitar, 8 Surgeon, 13 Flock, 15 Acorn, 17 Bubble 31 Anaemia. **Down** 1 Designs, 2 Pilmsoils, 3 Sieve, 4 Tobago, 12 Nylon, 24 Flair, 26 Leg, 27 Ostracise, 29 Organ, 30 Fondant, 12 Eagle, 13 Force, 14 Salsa, 16 Bobbin, 18 Bishop, 19 Kebab, **Across** 1 Deposit, 5 Glasses, 9 Spine, 10 Blue Peter, 11 Gas, 12 Eagle, 13 Force, 14 Salsa, 16 Bobbin, 18 Bishop, 19 Kebab, 20 Organ, 24 Flair, 26 Leg, 27 Ostracise, 29 Organ, 30 Fondant, 31 Anaemia.

**ISSUE 255 CROSSWORD SOLUTIONS**

**CONTACT US!**  
 Got a question for our experts? Then email us at [simplyknitting@ourmedia.co.uk](mailto:simplyknitting@ourmedia.co.uk) or write to us at *Simply Knitting*, Eagle House, Bristol BS1 4ST

# Knitting Know-how

Write to our accomplished Q&A experts and have your tricky knitting queries and questions answered in no time!



**KNIT GURU**

**Faye Perriam-Reed**  
 Technical Editor & Designer

Freelance technical editor and designer, Faye has a love of texture, and all the maths that comes with it.



**Jen Bartlett**  
 Technical Editor

Stitch expert and technical whizz, Jen likes to tackle the trickiest of knitting problems.



**Cory Sydee**  
 Technical Editor

New expert and knitting super-fan, Cory likes to delve into the toughest of knitting conundrums.



**Sophie Jordan**  
 Deputy Editor

Passionate about colour combinations and Fair Isle, Sophie has 40 knitting years under her belt.

## QUESTION OF THE MONTH

### CONTINENTAL CHOICE

**Q** I think it's time I switch over to continental style knitting at last! How should I go about making the transition?

**f Linda Beard**

That's an exciting challenge, Linda. Continental knitting has a lot of benefits and can really level up your knitting. Simply put, continental knitting is just a different way of holding the yarn as you work. You'll have the yarn in your left hand rather than your right, which enables you to pick up the yarn rather than 'throwing' it over the needle, English-style. This reduced movement

means the process is much speedier and can be a lot gentler on your hands and wrists. Just like when you first learnt to knit, it will take a little while for your tension to settle and become even. This change will be noticeable if you switch part way through a large project, and can be problematic with garments as correct tension is key in order to make your chosen size. We'd recommend plenty of practice with continental knitting first. Try a smaller project with a lot of plain stockinette stitch to start with. You may find that your tension with continental remains significantly tighter or looser than when you knit English style. Just adjust your needle size accordingly to meet the tension you need for your project. You can find a handy step-by-step guide to continental knitting on

our website [www.gathered.how/knitting-and-crochet/knitting/how-to-knit-continental-style](http://www.gathered.how/knitting-and-crochet/knitting/how-to-knit-continental-style). **Cory**



Try continental knitting if you're after a style that's easier on your joints

### DESIGN DESIRE

**Q** I'd love to start designing my own project, but I want to do it properly, and don't know where to start.

**f Han Lee**

Designing your own knitting patterns can be so rewarding. Here are our top tips!

**1 Get inspired and define your style** by looking at various sources such as nature, fashion, art, or existing patterns.

**2 Draw your designs** Putting your ideas down on paper will help you to develop an understanding of garment structure, and how you want the item to look.

**3 Learn about yarn** Getting up close with your yarn options will set you apart as a

designer. Cast on with all the different types of yarn to get a better understanding of each yarn's individual characteristics.

**4 Boost your skill set** Knowing a lot of stitches and techniques will give you that edge when it comes to creating.

**5 Knit a sample first** Once you've done all your research, start with a smaller version of your project. This prototype will help you uncover any issues with your design, and allows for experimentation. Make notes!

**6 Write clear and concise patterns** Use your notes to write your pattern instructions, making sure they are easy to follow. Include information on materials, gauge, sizing, and any special techniques used. **Sophie**



You'll soon be designing great knits (like Doris here) if you follow our tips



## TENSION MATTERS

**Q** I'm quite new to knitting and am struggling to get my tension to stay even. Is there a particular way I should be holding the yarn?

**f** **Cameron Reynolds**

The route to even tension is practice, practice, practice! Wobbly tension is totally normal for beginners, we've all been there. Some of the reasons your tension may not have settled yet is if you are making any changes in how you are holding your yarn and needles. If you have altered the way you are wrapping or gripping the yarn with your fingers, variations in the angle of your needles can affect your stitches. To prevent gapping in your stitches, try knitting with your needles held close together and keep the stitches near the tips of your needles.

There's also a couple of yarny accessories you might like to try that could help with your tension. How about using a yarn bowl? It's a solid curved dish designed with little notch especially for guiding your yarn. The idea is you pop your ball of yarn into the bowl, feed the working end through the notch and get knitting. Your yarn will be neatly contained (less tangles and rolling on the floor!) and it will flow to your hands much more smoothly. In a similar vein, a yarn ring could help provide a more

consistent tension. Worn on a finger of your yarn-holding hand, with your working yarn threaded through a special loop, you can knit away without worrying about how you are gripping the yarn. We hope this helps.

**Cory**



## HAND-DYED DELIGHTS

**Q** Whenever I travel or go to a yarn show, I like to pick up a skein of local hand-dyed yarn if I can find it. I now have quite a large collection and I don't know what to make with it all! Any recommendations for single-skein 4ply projects? **f** **Melissa Henderson**

Yarny souvenirs are the best kind, aren't they? You have a creative keepsake to remind you of your trip, and you're supporting local indie dyers too! What a lovely idea. And we're pretty sure you're not the only one with a few too many single skeins lurking in your stash, Melissa. With special yarns like that we knitters sometimes worry about it being 'too nice' to use and get caught in a never-ending search for the perfect pattern – something worthy of a fancy fibre or colourway. There's extra pressure if it was one of a kind or particularly expensive.

If you feel ready to get making with your souvenir skeins, the best project is always the one you love the most. Perhaps one that stops you in your tracks as you're scrolling the 'Hot right now' list on Ravelry because you can't wait to wear it or know immediately who it would make the perfect gift for. Accessories are the obvious choice for a skein of 4ply, but deciding what to make with yours largely depends on the kind of projects you like to work on and the fibre. A superwash wool with nylon is a natural option for socks, whereas something silky will have wonderful drape for a shawl. A pair



of fingerless mitts with pretty texture is ideal for your favourite colours.

Some of our favourite one-skein patterns for showing off a special skein are: Winwick Mum's Hidden Gem socks from our issue 225 sock supplement and Martina Behm's classic sawtooth Hitchhiker scarf – both available on Ravelry. They're equally impressive, but just pared back enough to let the yarn shine. **Jen**



**GUEST  
EXPERT**

**FAYE  
PERRIAM-REED**

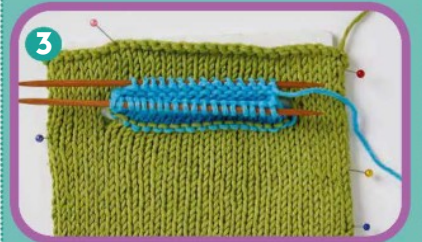
## ADD AN AFTERTHOUGHT POCKET TO YOUR KNIT

**1** Locate where you'd like the top of your pocket to be. Count how many stitches wide you want it to be. Cut the yarn in the middle of this space. Don't cut where the top corner of the pocket will be, as there won't be enough yarn to weave the ends in. Unravel the yarn each side of the cut until the pocket is the width you'd like. This is the pocket opening.

**2** Pick up the new stitches formed by the unravelled yarn over three double-pointed needles (DPNs), with the bottom stitches over one needle and the top stitches split over two needles. There will always be one stitch less on one side than the other.



**3** With a new ball of yarn, purl across the bottom needle of stitches (to create a fold line) then begin knitting in the round.



**4** Continue knitting in the round until the pocket is the desired length. Finish by working a three-needle cast-off to join both the top and bottom rows of knitting. There will be one stitch left when you reach the end – cast it off by itself.

**5** Tidy up the pocket's corner holes with a few darning stitches when weaving in your yarn ends.



Everything you need for your best Christmas ever!

**GIFTS!**  
IDEAS  
FOR ALL  
TASTES



**ONLY**  
**£6.99**  
Incl. UK p&p

# SIMPLY CHRISTMAS

This Christmas, our ultimate festive gift pack is bigger than ever! Get your bumper magazine, plus four bonus extras, all filled with the latest ideas for home styling, gifts, cooking, family fun and seasonal inspiration. Make your winter truly magical!



COOKING



CREATING



STYLING

**5-IN-1  
GIFT PACK**  
YOUR FAVOURITE  
MAG PLUS FOUR  
BONUS EXTRAS!



HOMES



DAYS OUT



GIFTS

Contents subject to change

**PRE-ORDER SIMPLY CHRISTMAS NOW!**

**ONLINE** [www.ourmediashop.com/simplychristmas24](http://www.ourmediashop.com/simplychristmas24)

**CALL** 03330 162143+ and quote 'SIMPLY CHRISTMAS 24 PRINT 1'

+UK calls will cost the same as other standard fixed line numbers (starting 01 or 02) and are included as part of any inclusive or free minutes allowances (if offered by your phone tariff). Lines open weekdays 9am to 5pm. Overseas please call +44 (0)1604 973 746. Price for UK is £6.99, EUR price £7.99, ROW price £8.99. All prices include P&P. Please allow up to 28 days for delivery. Offer subject to availability.



# PARROT FASHION

If you're a fan of our feathered friends, you'll love this realistic macaw by **Susan Cowper**. We can't guarantee he'll talk though!

FUN  
HOME  
*décor!*

EXCLUSIVE TO  
Simply  
Knitting  
EXCLUSIVE TO



# \* MACAW WALL HANGING



## IMPROVE YOUR SKILLS

### YOU WILL NEED

- Stylecraft Special DK (100% acrylic, 100g/295m)  
1 ball each of  
**Yarn A** Sunshine (1114)  
**Yarn B** Lapis (1831)  
**Yarn C** Cream (1005)  
**Yarn D** Black (1002)  
**Yarn E** Graphite (1063)
- A pair of 4mm needles
- Stitch holder
- 2 stitch markers or scraps of yarn

- 1 pair of 12mm black safety eyes
- 30cm bamboo hoop
- Stuffing
- Short length of fishing line or nylon thread

### TENSION

22 sts and 28 rows to measure 10x10cm (4x4in) over st st using 4mm needles

### MEASUREMENTS

11cm (4¼in) wide and 32cm (12½in) tall for parrot only

### ABBREVIATIONS

For a full list see page 79

### WHERE TO BUY

- For yarn stockists contact Stylecraft on 01484 848435 or [www.stylecraft-yarns.co.uk](http://www.stylecraft-yarns.co.uk)

### OR YOU COULD TRY...

- Wool and Crafts 01455 238768 or [www.woolandcrafts.co.uk](http://www.woolandcrafts.co.uk)

SHOP SMART  
SHOP LOCAL!  
Turn to page 77



## MACAW WALL HANGING MACAW FRONT

Cast on 2 sts using 4mm needles and Yarn A.

**Row 1** (RS) \*Kfb; rep from \* to end. [4 sts]

**Row 2** Purl.

**Row 3** Kfb, K2, kfb. [6 sts]

**Row 4** Purl.

**Row 5** Kfb, K4, kfb. [8 sts]

**Rows 6 to 8** Starting with a WS purl row work in st st.

**Row 9** Kfb, K6, kfb. [10 sts]

**Rows 10 to 12** Starting with a WS purl row work in st st.

**Row 13** Kfb, K8, kfb. [12 sts]

**Rows 14 to 16** Starting with a WS purl row work in st st.

**Row 17** Kfb, K10, kfb. [14 sts]

**Rows 18 to 20** Starting with a WS purl row work in st st.

**Row 21** Kfb, K12, kfb. [16 sts]

**Rows 22 to 42** Starting with a WS purl row work in st st.

Mark the last row – this is the top of the tail.\*\*

**Row 43** Skpo, K4, (kfb) 4 times, K4, k2tog. [18 sts]

**Row 44** Purl.

**Row 45** K4, (kfb, K2) 3 times, kfb, K4. [22 sts]

**Rows 46 to 52** Starting with a WS purl row work in st st.

**Row 53** K7, kfb, K6, kfb, K7. [24 sts]

**Rows 54 to 58** Starting with a WS purl row work in st st.

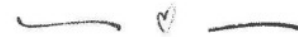
**Row 59** Kfb, K22, kfb. [26 sts]

**Rows 60 to 76** Starting with a WS purl row work in st st.

**Row 77** Skpo, K22, k2tog. [24 sts]

*"This colourful knitted macaw will certainly add a pop of colour hanging in your home, as well as bringing some quirky charm to your decor – definitely a talking point!"*

SOPHIE JORDAN, DEPUTY EDITOR



**Row 78** Purl.

**Row 79** Skpo, K20, k2tog. [22 sts]

**Row 80** Purl.

**Row 81** Skpo, K3, (k2tog, K1) 3 times, k2tog, K4, k2tog. [16 sts]

**Rows 82 to 84** Starting with a WS purl row work in st st.

**Row 85** Kfb, K14, kfb. [18 sts]

**Rows 86 to 90** Starting with a WS purl row work in st st.

**Row 91** Skpo, K14, k2tog. [16 sts]

**Row 92** Purl.

**Row 93** Skpo, K12, k2tog. [14 sts]

**Row 94** Purl.

Break yarn and leave these stitches on a stitch holder until later.

### MACAW BACK

Cast on 2 sts using 4mm needles and Yarn B.

Work as given for Front to \*\*.

## STEP-BY-STEP SKPO SLIP 1, KNIT 1, PASS SLIPPED STITCH OVER



**1** Insert the point of the right-hand needle into the next stitch as if to knit, but instead slip the stitch on to the right-hand needle.



**2** Knit the next stitch as normal.



**3** Insert the point of the left-hand needle into the slipped stitch on the right-hand needle and lift it over the knitted stitch.



**4** Continue knitting as directed in the pattern. This decrease forms a slant that slopes towards the left.

**Row 43** Kfb, K14, kfb. [18 sts]  
**Row 44** Purl.  
**Row 45** Kfb, K16, kfb. [20 sts]  
**Row 46** Purl.  
**Row 47** Kfb, K18, kfb. [22 sts]  
**Row 48** Purl.  
**Row 49** Kfb, K20, kfb. [24 sts]  
**Rows 50 to 76** Starting with a WS purl row work in st st.  
**Row 77** K2tog, K20, k2tog. [22 sts]  
**Rows 78 to 80** Starting with a WS purl row work in st st.  
**Row 81** K2tog, K18, k2tog. [20 sts]  
**Rows 82 to 90** Starting with a WS purl row work in st st.  
**Row 91** Kfb, K18, kfb. [22 sts]  
**Row 92** Purl.  
**Row 93** Kfb, K20, kfb. [24 sts]  
**Row 94** Purl.

Proceed to work across the Macaw Back on the needles and then Macaw Front on the stitch holder, joining them together as follows.

**Row 95** K24, k2tog, K10, k2tog. [36 sts]  
**Row 96** Purl.  
**Row 97** \*K4, k2tog; rep from \* to end. [30 sts]  
**Row 98** Purl.  
**Row 99** \*K3, k2tog; rep from \* to end. [24 sts]  
**Row 100** Purl.  
**Row 101** \*K2, k2tog; rep from \* to end. [18 sts]  
**Row 102** Purl.  
**Row 103** \*k2tog; rep from \* to end. [9 sts]  
 Break yarn and thread through remaining sts. Pull tight to fasten.

- 1 With the WS together, fold so that the Macaw Front is on the Macaw Back and pin the two marked rows together. Sew the row-end edges together from the fastened-off end down to the marked rows.
- 2 With the marked rows uppermost, open out the knitting so that the wrong side of the marked rows are exposed. Working in just the back loops, stitch the two marked rows together. This is the top of the tail and will close the body off from the tail. Using mattress stitch, sew the row-end edges of the tail together.
- 3 Using mattress stitch, sew the row-end edges down the open side of the head to the bottom of the neck and stop. Starting from the top of the tail, sew the row-end edges up towards the neck, leaving a gap.
- 4 Stuff the Macaw, leaving the gap open for the safety eyes later.

## FACE

**Cast on** 48 sts using 4mm needles and Yarn C.  
**Row 1** (RS) (K5, k2tog) twice, k2tog, (K4, k2tog) 3 times, (k2tog, K5) twice. [40 sts]  
**Row 2** P10, (p2tog) twice, P12, (p2tog) twice, P10. [36 sts]  
**Row 3** K3, k2tog, K2, k2tog, K4, k2tog, K1, (k2tog) twice, K1, k2tog, K4, k2tog, K2, k2tog, K3. [28 sts]  
**Row 4** (P1, p2tog) 3 times, (P2, p2tog) 3 times, (P1, p2tog) twice, P1. [20 sts]  
**Row 5** K2tog, \*K1, k2tog; rep from \* to end. [13 sts]  
**Row 6** P1, \*p2tog, P1; rep from \* to end. [9 sts]  
 Break yarn and thread through remaining sts. Pull tight to fasten.

- 1 Keeping the work flat, bring the row-end edges around to meet to make a rough oval shape. Using mattress stitch, sew the row-end edges together.
- 2 With the seam you have just sewn downwards, pin and sew the Face to the centre front of the Macaw's head so that about a quarter of the Face is above the colour change line of the main Macaw body.





## BEAK

**Cast on** 24 sts using 4mm needles and Yarn D.

**Row 1** (RS) Knit.

**Row 2** Purl.

**Row 3** K2tog, K8, (k2tog) twice, K8, k2tog. [20 sts]

**Row 4** Purl.

**Row 5** K2tog, K6, (k2tog) twice, K6, k2tog. [16 sts]

**Row 6** Purl.

**Row 7** **Cast off** 3 sts, K2, (k2tog) twice, K6. [11 sts]

**Row 8** **Cast off** 3 sts, P7. [8 sts]

**Row 9** \*K2tog; rep from \* to end. [4 sts]

**Row 10** Purl.

Break yarn and thread through remaining sts. Pull tight to fasten.

1 With WS together, pin and sew row-end edges together, then stuff.

With the seam you have just sewn downwards, flatten the Beak.

2 Pin and sew the Beak with the seam downwards to the centre front of the Face so that the bottom of the Beak rests on the centre bottom of the Face.

3 Push the two safety eyes through the face to line up with the colour change line of the main head, and so that the other edge of the eye rests on the edge of the face. Attach the safety eye backs.

4 Sew the gap in the Macaw body seam closed.

## WINGS (MAKE 2)

**Cast on** 2 sts using 4mm needles and Yarn B.

**Row 1** (RS) \*Kfb; rep from \* to end. [4 sts]

**Row 2** Purl.

**Row 3** Kfb, K2, kfb. [6 sts]

**Row 4** Purl.

**Row 5** **Cast on** 2 sts to the LH needle, K8. [8 sts]

**Row 6** **Cast on** 2 sts to the LH needle, P10. [10 sts]

**Row 7** Knit.

**Row 8** P4, (pfb) twice, P4. [12 sts]

**Row 9** **Cast on** 2 sts to the LH needle, K14. [14 sts]

**Row 10** **Cast on** 2 sts to the LH needle, P16. [16 sts]

**Row 11** Knit.

**Row 12** P7, (pfb) twice, P7. [18 sts]

**Rows 13 to 18** Starting with a RS knit row work st st.

**Row 19** Kfb, K16, kfb. [20 sts]

**Rows 20 to 24** Starting with a WS purl row work st st.

**Row 25** K9, (kfb) twice, K9. [22 sts]

**Rows 26 to 40** Starting with a WS purl row work st st.

**Row 41** K9, k2tog, skpo, K9. [20 sts]

**Row 42** Purl.

**Row 43** K8, k2tog, skpo, K8. [18 sts]

**Row 44** Purl.

**Row 45** \*Skpo, K5, k2tog; rep from \* to end. [14 sts]

**Row 46** P2tog, P3, (p2tog) twice, P3, p2tog. [10 sts]

**Row 47** Knit.

**Row 48** \*P2tog; rep from \* to end. [5 sts]

Break yarn and thread through remaining sts. Pull tight to fasten.

With WS together, sew the row-end edges together. With the seam you have just sewn facing forwards, sew the Wings to either side of the Macaw's body.

## FEET (MAKE 2)

**Cast on** 10 sts using 4mm needles and Yarn E.

**Row 1** (RS) Sl1, K9.

**Row 2** Sl1, P9.

Repeat Rows 1 and 2 another 2 times.

**Row 7** **Cast off** 4 sts, K5. [6 sts]

**Row 8** **Cast off** 4 sts, P1. [2 sts]

**Row 9** **Cast on** 4 sts to the LH needle, K6. [6 sts]

**Row 10 Cast on** 4 sts to the LH needle, P10. [10 sts]

**Row 11** Sl1, K9.

**Row 12** Sl1, P9.

Repeat Rows 11 and 12 once more.

**Row 15** Sl1, K9.

**Cast off.**

**1** With the work lying flat with the WS up you will have a chunky 'H' shape. Fold the starting cast-on edge into the centre and sew this edge to the cast-off edges of Rows 7 and 8. Sew a row of running stitches at each end of the toes and draw up to close.

**2** In a similar way, fold the final cast-off edge into the centre and sew this edge to the cast-on edges of Rows 9 and 10. Sew a row of running stitches at each end of the toes and draw up to close.

You should have two rolls of knitting that are joined in the middle. Put Feet to one side until the Legs are made.

## LEGS (MAKE 2)

**Cast on** 8 sts using 4mm needles and Yarn E.

**Rows 1 to 4** Starting with a RS knit row work st st.

**Row 5** \*K2tog; rep from \* to end. [4 sts]

Break yarn and thread through remaining sts. Pull tight to fasten.

**1** With WS together, sew the row-end edges together. Stuff lightly. With the Feet RS up, sew the open cast-on edge of one Leg to the centre-top of one Foot each.

**2** With the Macaw laying down, rest the Legs on the bottom of the body so that the back toes are even with the ridge at the top of the tail where you had marked the rows. Evenly space the Legs, pinning into place, and sew the Legs to the Macaw body.

## HOOP FIXING BAND

**Cast on** 7 sts using 4mm needles and Yarn A.

**Rows 1 to 3** Knit.

**Cast off.**

Wrap the knitted strip around the top of the hoop so that the row-end edges meet and sew into place.

## HOOP FINIAL

**Cast on** 8 sts using 4mm needles and Yarn A.

**Row 1 (RS)** \*Kfb; rep from \* to end. [16 sts]

**Rows 2 to 4** Starting with a WS purl row work in st st.

**Row 5** \*K2tog, rep from \* to end. [8 sts]

Break yarn and thread through remaining sts. Pull tight to fasten.

**1** With WS tog, sew along the row-end edges, stuffing as you go.

**2** With the open cast-on edge downwards, sew the Finial to the top of the Hoop Fixing Band using a long length of Yarn A, bringing the needle and tail of yarn up through the centre top of the Finial. You can use this to hang the hoop up or you can sew a split metal ring to the top of the Finial to hang the hoop.

## FINISHING

Attach a length of fishing line to the underside of the Hoop Fixing Band and then sew the other end of the fishing line to the drawn-up point at the centre of the Macaw's head. You're aiming to suspend your Macaw so that the feet sit on the lower part of the hoop. When it's in the right place, tie a knot in the fishing line to secure. You may notice that the fishing line is causing a peak on the top of the head, counteract this by threading the line into a needle, sewing the line down through the head and bringing it out in the back of the Macaw. Pull it firmly to pull the peak down; secure the fishing line and trim. ●



# 3 ISSUES FOR £9.99 WHEN YOU SUBSCRIBE TODAY!



## SUBSCRIBE TODAY:

**VISIT** [www.ourmediashop.com/SCHA24](http://www.ourmediashop.com/SCHA24)

**PHONE** 03330 162 146<sup>†</sup> (quote code SCHA24)

<sup>†</sup> UK calls will cost the same as other standard fixed line numbers (starting 01 or 02) and are included as part of any inclusive or free minutes allowances (if offered by your phone tariff). Outside of free call packages call charges from mobile phones will cost between 3p and 55p per minute. Lines are open Mon to Fri 9am – 5pm for orders and enquiries.

Terms and Conditions: \*This trial offer is for new print subscribers only subscribing by Direct Debit. You will receive 3 issues for £9.99 and then continue on a 6 issue Direct Debit of £34.99 thereafter. All savings are calculated as a percentage of Basic Annual Rate. The UK Basic annual rate is £118.87 which includes any event issues (issues charged at higher than standard cover price) published in a 12 month period. This offer is for new UK print subscribers only. Full details of the Direct Debit guarantee are available on request. Prices correct at point of print and subject to change. Offer ends 31st December 2024.





# CROSSHATCH

Perfect your colourwork with this versatile and sassy tartan-inspired knit in a relaxed T-shirt style. By **Irene from Handmade Past**

# \* TARTAN T-SHIRT



## TAKE ON A CHALLENGE

### YOU WILL NEED

- Scheepjes Terrazzo (DK, 70% recycled mulesing free wool, 30% recycled viscose, 50g/175m)  
*For yarn quantities and measurements see size table*
- A pair of 4mm needles
- A 4mm crochet hook

### TENSION

21 sts x 31 rows to measure 10x10cm (4x4in) over stocking stitch using 4mm needles

### ABBREVIATIONS

For a full list see page 79

### WHERE TO BUY

For yarn stockists visit Scheepjes at [www.scheepjes.com/en/](http://www.scheepjes.com/en/)

### OR YOU COULD TRY...

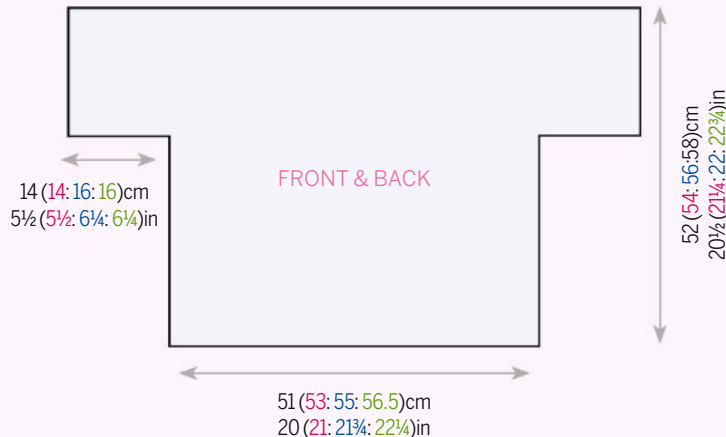
- Wool Warehouse 0800 505 3300 or [www.woolwarehouse.co.uk](http://www.woolwarehouse.co.uk)
- Gillian Gladrag 01306 898144 or [www.gilliangladrag.co.uk](http://www.gilliangladrag.co.uk)



## MEET THE DESIGNER

### IRENE FROM HANDMADE PAST

"I love making things – it gives me great joy, pleasure and happiness. With my knitting designs I hope to inspire you to find your creativity, and to bring joy to your lives."



*"I'm already thinking of different ways I can wear this knit – not only is it stunning cinched at the waist, wear it loose over jeans or add an extra layer underneath!"*

JEN BARTLETT, TECHNICAL EDITOR

## TARTAN T-SHIRT STITCH PATTERNS

### SEED STITCH

Worked over an odd number of sts.

**Row 1 (RS)** (K1, P1) to last st, K1.

**Row 2** As Row 1.

### SEED STITCH

Worked over an even number of sts.

**Row 1 (RS)** (K1, P1) to end.

**Row 2** (P1, K1) to end.

**Notes** Once you have finished your knitting, the columns of purl stitches on the body will be filled in with stitches made with a crochet hook, vertically. You start on the bottom of your work and you work your way up to the neck. Use crochet chain sts through your work on every horizontal purl stitch 'bar'. It will look just as if you knitted it but it's actually a crochet stitch. When changing colours for horizontal stripes, leave Yarn A hanging, don't break it.

## FIND YOUR SIZE

SIZE		S	M	L	XL
TO FIT BUST	cm	87	91	95	99
	in	34¼	35¾	37½	39
ACTUAL BUST	cm	102	106	110	113
	in	40¼	41¾	43¼	44½
LENGTH	cm	52	54	56	58
	in	20½	21¼	22	22¾
SLEEVE LENGTH	cm	14	14	16	16
	in	5½	5½	6¼	6¼
YARN		Scheepjes Terrazzo DK (50g/175m)			
Yarn A Prosecco (744)		4	4	4	5
Yarn B Oro (703)		1	1	1	1
Yarn C Mandarino (715)		1	1	1	1
Yarn D Olivia (707)		1	1	1	1
Yarn E Lago (738)		1	1	1	1
Yarn F Rosa (723)		1	1	1	1
Yarn G Corallo (713)		1	1	1	1
Yarn H Cremisi (719)		1	1	1	1
Yarn I Espresso (717)		1	1	1	1

**SIZING COLOUR KEY** So you can re-use this pattern, we've colour-coded the sizing instructions. Simply follow our colour-coded measurements and you're off

**BACK AND FRONT (BOTH ALIKE)**

**Cast on** 96 (100: 103: 107) sts using 4mm needles and Yarn A.

**Rows 1 to 8** Work in Seed Stitch.

**Row 9** K5 (7: 5: 7) (P1, M1, P1, K5) 13 (13: 14: 14) times, K0 (2: 0: 2).

[109 (113: 117: 121) sts]

**Row 10** P5 (7: 5: 7) (K1, P1, K1, P5) 13 (13: 14: 14) times, P0 (2: 0: 2).

**Row 11** K5 (7: 5: 7) (P1, K1, P1, K5) 13 (13: 14: 14) times, K0 (2: 0: 2).

**Row 12** As Row 10.

Join Yarn B.

**Rows 13 and 14** As Rows 11 and 12, using Yarn B.

Cut Yarn B and use Yarn A again.

**Rows 15 to 18** As Rows 11 and 12, twice.

Join Yarn C.

**Rows 19 and 20** As Rows 11 and 12, using Yarn C.

Cut Yarn C and use Yarn A again.

**Rows 21 to 24** As Rows 11 and 12, twice.

Join Yarn D.

**Rows 25 and 26** As Rows 11 and 12, using Yarn D.

Cut Yarn D and use Yarn A again

**Rows 27 to 30** As Rows 11 and 12, twice.

Join Yarn E.

**Rows 31 and 32** As Rows 11 and 12, using Yarn E.

Cut Yarn E and use Yarn A again

**Rows 33 to 36** As Rows 11 and 12, twice.

Join Yarn F.

**Rows 37 and 38** As Rows 11 and 12, using Yarn F.

Cut Yarn F and use Yarn A again

**Rows 39 to 42** As Rows 11 and 12, twice.

Join Yarn H.

**Rows 43 and 44** As Rows 11 and 12, using Yarn H.

Cut Yarn H and use Yarn A again



**Rows 45 to 48** As Rows 11 and 12, twice.  
Join Yarn I.

**Rows 49 to 50** As Rows 11 and 12, using Yarn I.  
Cut Yarn I and use Yarn A again

**Rows 51 to 54** As Rows 11 and 12, twice.  
Repeat Rows 13 to 54 until piece meas 29 (31: 33: 35)cm from cast-on edge, ending after a WS row. You should just have completed your 14th (15th: 16th: 17th) stripe.

Make a note of which row you end on, so that you can match this for the second piece.

### SHAPE SLEEVES

**Cast on** 26 (26: 30: 30) sts at the beginning of the next 2 rows.  
[161 (165: 177: 181) sts]

Continue in pattern for another 70 rows, thus ending after the 12th stripe since you began the sleeves and after a WS row.

### NECK AND SHOULDERS

**Next row** (RS) Knit to end in Yarn A.

**Rib row 1** (P1, K1) to last st, P1.

**Rib row 2** (K1, P1) to last st, K1.

Rep last 2 rows once more and then Rib row 1 again.

**Cast off** loosely in rib.

### INTERIM MAKING UP

Join the shoulders using your preferred method, leaving the centre 50 sts unjoined for neck opening.

### CROCHET

The next part is making all the vertical lines. Work lines of crochet chain stitch through each vertical line of 'bars' left by the purl stitches. Crochet one chain over the first bar, through your knitted work and come back in front of you to work with the loop, again over the next horizontal bar, another chain through your work and the yarn comes back in a loop, loop this through your previous loop in front of your work, and so on. Working from left to right, work your first stripe with Yarn F, your next with Yarn G, then Yarns H, I, B, C, D, E. After you've completed your Yarn E stripe, work the same stripe sequence again, until you reach the end of your T-shirt. It's optional to crochet until the last stitch (over the border).

### SLEEVE BORDERS

Pick up and knit 76 sts around the sleeve opening.

Work in seed st for 9 rows and **cast off**.

Join sleeve and side seams. Weave in all ends. Block gently to measurements, following yarn care instructions on ball band. ●

## STEP-BY-STEP PICK UP AND KNIT



**1** Holding the piece of knitting you are going to pick the sts up from in your left hand, and starting at the top-right corner, insert the right-hand needle between the first two stitches of the row.



**2** Wind your yarn around the needle and 'knit' the first stitch...



**3** ...And pull the new stitch through between the two stitches.



**4** Continue to work like this along the row or until you have picked up the necessary amount of stitches. Try to space your stitches evenly.

# LOOKING FOR A GOOD YARN? VISIT YOUR WEBSITE.

[ukhandknitting.com](http://ukhandknitting.com)



### FIND AN EVENT

Click on the calendar to discover local and national events

<		April 2024						>	
m	t	w	t	f	s	s			
1	2	3	4	5	6	7			
8	9	10	11	12	13	14			
15	16	17	18	19	20	21			
22	23	24	25	26	27	28			
29	30								

There are over 500 yarn shops in our community of independent retailers. Each one has a warm welcome and offers you the personal service you've always loved.

You can chat about a project. Feel the quality of the yarn. Pick up some useful advice. Join the shop's craft group. Invest in a stash for the future. And much, much more.

Before you start your next knitting or crochet project, or if you need help with an existing one, visit [ukhandknitting.com](http://ukhandknitting.com) to see what your yarn shops can offer you.

**WE ARE  
UK HAND KNITTING**

# How to knit

If you're new to knitting, or just need a little refresher, our knitting guide is here to make sure you get it right first time, every time

SCAN HERE...



**FOR TIPS AND TUTORIALS!**

Scan this QR code with your phone or tablet camera or via a QR code reader app.

## CABLE CAST-ON METHOD Use it for a firm edge, and when adding stitches to your work



**1** Make a slip knot. Insert right-hand needle into the stitch as if to knit. Wrap the yarn around the point and pull through, slipping the stitch on to the left-hand needle.



**2** Push the point of the right-hand needle between the first and second stitches. Wrap the yarn anti-clockwise around the point of the right-hand needle.



**3** Pull the loop out with the right-hand needle, then slip it over the tip of the left-hand needle. Repeat Steps 2 and 3 until you have the number of stitches you require.

## THUMB CAST-ON METHOD A great all rounder, use it to cast on stitches quickly and easily



**1** Make a slip knot and place it on a needle, leaving a long tail. The tail length depends on the number of stitches you wish to cast on. Try a length about 3 times the width of the project.



**2** Hold the tail in your left hand with your thumb sticking up. Make a circle anti-clockwise with your thumb. You should end up with a cross on the front of your thumb.



**3** Push the needle tip along the outside of your thumb so it passes through the loop. Wrap the working yarn as if to knit.



**4** Draw the yarn through the thumb loop and then between the arms of the cross. Slip your thumb out and pull to tighten the stitch. Repeat from Step 2.

## KNIT Follow our simple steps to make the most important stitch you'll learn



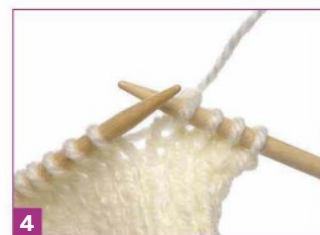
**1** Hold the needle with the stitches on it in your left hand. Keeping the yarn in your right hand and at the back of your work, insert the point of the right-hand needle up into the front loop of the first stitch, as shown.



**2** Now wind the yarn anti-clockwise around the point of the right-hand needle using your index finger. It's important to keep the yarn in your right hand relatively taut to maintain an even tension as you go.



**3** Bring the right-hand needle down through the loop, making sure that you catch the yarn you wound around the needle. This creates the stitch. Don't pull the free yarn too tightly, let out some slack.



**4** Push the point of the right needle further through the stitch you created, then gently pull the right needle up and to your left, taking the original loop with it. You've created one knit stitch. Repeat Steps 1 to 4 across the row.

**PURL** To make purl stitches, just reverse the action of plain knit stitches



1 Holding the needle with all the stitches on in your left hand, and ensuring that the yarn is at the front of your work, insert the right-hand needle up through the front loop of your first stitch as shown.



2 Wind the yarn around the tip of the right-hand needle from right to left, in an anti-clockwise motion, constantly keeping a slight tension on the yarn.



3 Now slip the right-hand needle back through the stitch, ensuring that you catch the yarn that you've already wound around the needle. This creates a stitch on your right-hand needle.



4 Pushing the point of the right-hand needle a little further through the stitch, pull the original loop up and off the left-hand needle. That's your first purl stitch! Repeat Steps 1 to 4 across the row.

**CAST OFF** Finish off your knitting with this straightforward cast-off technique



1 Start by knitting the first two stitches of the row as normal, but don't go any further along as you usually would.



2 Insert the left-hand needle through the first stitch, as shown. Lift this stitch over the other stitch on the right-hand needle and over the needle point.



3 Knit another stitch so you have two on the right needle. Lift the first stitch over the second, then repeat Steps 1 to 3.



4 When you get to the last stitch, cut the yarn about 15cm (6in) away, feed it through the loop and pull through firmly to fasten off.

**ABBREVIATIONS AND USEFUL INFO**

**alt** alternate  
**approx** approximately  
**beg** beginning  
**b&t** (break and tighten) break off the yarn and thread the end through the st(s) left on the needle. Pull the end of the yarn to tighten the st(s) together  
**C4B** slip next 2 stitches to cn and hold at back, K2; K2 from cn  
**C4F** slip next 2 stitches to cn and hold at front, K2; K2 from cn  
**cb** cable back  
**CC** contrast colour  
**cf** cable forward  
**cn** cable needle  
**cont** continue  
**dec** decrease(ing) (by working two stitches together)  
**DK** double knitting  
**DPNs** double-pointed needles  
**fol/s** following/follows  
**g st** garter stitch (knit every row)  
**inc** increase (usually knit into same stitch twice)  
**K/k** knit  
**kbfb** knit into the back, front and back of the next st [inc 2 sts]  
**kfb** knit into front and back of stitch  
**kwise** knitwise; by knitting the stitch  
**k2tog** knit the next two stitches together  
**k(1)tbl** knit (1) into back loop  
**LH** left hand  
**LT** left twist  
**meas** measure(s)  
**M1** make one stitch by knitting into back of loop between two stitches

**M1L** (left leaning increase) with left needle tip, lift strand between needles from front to back. Knit lifted loop through back of loop  
**M1R** (right leaning increase) with left needle tip, lift strand between needles from back to front. Knit lifted loop through front of loop  
**M1P** make one purlwise by purling into back of loop between two stitches (increase 1 stitch)  
**MB** make a bobble  
**MC** main colour  
**mrk** marker  
**P/p** purl  
**PB** place bead  
**pfb** purl into front and back of stitch  
**PM** place marker  
**P2tog** purl 2 stitches together (1 stitch decreased)  
**P3tog** purl 3 stitches together (2 stitches decreased)  
**prev** previous  
**pssso** pass slipped stitch(es) over  
**p(1)tbl** purl (1) into back of the loop (purlwise) by purling the stitch  
**pwise** remain/remaining  
**rem** repeat(s)  
**rep(s)** repeat(s)  
**rev st st** reverse stocking stitch  
**RH** right hand  
**rib2tog** either k2tog or p2tog dep on what next stitch in ribbing should be (keeps ribbing looking neat on buttonholes)  
**rnd(s)** round(s) (on a circular needle/DPNs)  
**RS** right side

**RT** right twist  
**s2kpo** slip 2 stitches, K1, pass both slipped stitches over (2 stitches decreased)  
**skpo** slip 1 stitch, knit 1 stitch, pass slipped stitch over (1 stitch decreased)  
**sk2po** slip 1 stitch, knit 2 stitches together, pass slipped stitch over (2 stitches decreased)  
**sl** slip  
**sl st** slip stitch  
**SM** stitch marker  
**ssk** slip 2 stitches one at a time, knit 2 slipped stitches together (1 stitch decreased)  
**ssp** slip 2 stitches one at a time, purl 2 slipped stitches together through back loops (1 stitch decreased)  
**st(s)** stocking stitch  
**st st** through the back of the loop  
**tbl** slip next stitch to cn and hold at back, K1; P1 from cn  
**T2B** slip next stitch to cn and hold at front, P1; K1 from cn together  
**T2F** wrong side  
**tog** with yarn in back  
**WS** with yarn in front  
**wyib** yarn to the back  
**ybk** yarn forward  
**yfwd** yarn over  
**yo** yarn round needle  
**yrn** yarn over needle  
**yon** work instructions immediately following \*, then repeat as directed  
**\***

**NEEDLE SIZES**

UK	METRIC	US
14	2mm	0
13	2.25mm	1
–	2.5mm	–
12	2.75mm	2
11	3mm	–
10	3.25mm	3
–	3.5mm	4
9	3.75mm	5
8	4mm	6
7	4.5mm	7
6	5mm	8
5	5.5mm	9
4	6mm	10
3	6.5mm	10½
2	7mm	–
1	7.5mm	–
0	8mm	11
00	9mm	13
000	10mm	15
–	12mm	17
–	15mm	19
–	20mm	36
–	25mm	50

# Simply Knitting

## NEXT ISSUE

### Inside:

- **WIDE-FIT** rib detail jumper
- **SOFT COLOURBLOCK** cardigan
- **V-PATTERN** Sarah Hatton jumper
- **RAGLAN SLEEVE** men's jumper
- **MERRY-GO-ROUND** baby dress
- **DOUBLE-TEXTURE** kids' cardigan
- **RNLI CREW MEMBER** tea cosy
- **SUPER-SQUISHY** frog cushion
- **BAUBLE TRIO** for Christmas
- **AND SO MUCH MORE...**



**PLUS**

**EXTRA GIFTS**

**Festive Knits Collection**

**&**

**Vintage Christmas Decorations Collection**



**ISSUE 256 IS ON SALE THURS 3 OCTOBER**



# SAY HELLO

**WRITE TO US** *Simply Knitting* magazine, Our Media, Eagle House, Bristol BS1 4ST

**EMAIL THE EDITORIAL TEAM** [simplyknitting@ourmedia.co.uk](mailto:simplyknitting@ourmedia.co.uk)  
**SUBSCRIBERS** visit [www.buysubscriptions.com/contactus](http://www.buysubscriptions.com/contactus)

**FIND US AND FOLLOW US!**

**f** [Facebook.com/simplyknitting](https://www.facebook.com/simplyknitting)

**t** [@SimplyKnitMag](https://www.instagram.com/SimplyKnitMag)

**i** [@simplyknittingmag](https://www.pinterest.com/simplyknittingmag)

**p** [www.pinterest.com/simplyknittingmag](http://www.pinterest.com/simplyknittingmag)

**r** [ravelry.com/groups/simply-knitting-magazine](https://www.ravelry.com/groups/simply-knitting-magazine)

Tell us  
about what  
you've been  
knitting!

**Editor** Kirstie McLeod

**Creative Design Lead** Nicola Lynn

**Deputy Editor** Sophie Jordan

**Creative Designer** Camilla Owen

**Technical Editors** Jen Bartlett, Cory Sydee

**Contributors** Philippa Bunch, Colette Earley, Charlotte Foster Brown, Tricia Gilbert, Gingersnap Models, Michelle Hazell, Gina Kneifel, MOT Models, Mustard Models, Sandra Nesbitt, Rachael Prest, Faye Perrium-Reed, Arni Penfold, The Shed Photo Studio, Rosee Woodland

**Photography** Dave Caudery, Steve Sayers, Getty Images, Unsplash

**CONTENT OPERATION TEAM**

**Senior Content Operations Coordinator**  
Derrick Andrews

**Content Operations & Paper Manager**  
Rose Griffiths

**Group Content Operations & Sustainability Manager**  
Louisa Molter

**Director of Content Operations** Sarah Powell  
**Buyer** Karen Flannigan

**CIRCULATION**

**Newstrade Marketing Manager** Janine Smith

**ADVERTISING**

Call 0117 300 8206

**Commercial Brand Lead** Rachael Hawkins

**Advertising Coordinator** Molly Websdell

**Design Supervisors** Cee Pike and Andrew Hobsen

**MARKETING & SUBSCRIPTIONS**

**Senior Direct Marketing Executive** Kate Jones

**LICENSING**

**Director of Licensing & Syndication**

Tim Hudson [tim.hudson@immediate.co.uk](mailto:tim.hudson@immediate.co.uk)

**PUBLISHING**

**Publishing Director** Liz Taylor

**Head of Content** Gail Shortland

**SUBSCRIPTIONS**

Call 03330 162 147, email [www.ourmediashop.com/contactus](http://www.ourmediashop.com/contactus) or subscribe online at [www.ourmediashop.com/contactus](http://www.ourmediashop.com/contactus)

**Distribution** Frontline

Printed in England by William Gibbons

**Group Managing Director** Andy Marshall



Tel +44 (0)117 927 9009 (Bristol)

## MEET THE TEAM HAVE YOU TRIED ANY NEW KNITTING TECHNIQUES OR TOOLS THIS YEAR?



**Kirstie McLeod**  
Editor

*"I always like learning new things or improving my skills. Continental knitting is next on my list to master."*



**Cory Sydee**  
Technical Editor

*"I started doing the provisional cast on over either a spare needle cable or stitch holder cord. It makes getting stitches back on the needle so much easier."*



**Sophie Jordan**  
Deputy Editor

*"I've fallen in love with linen stitch. It's slow to grow, but knit it in multiple colours and it looks stunning!"*



**Jen Bartlett**  
Technical Editor

*"Having knitted 50 plus pairs of socks, all top down. I finally tried toe-up socks. It was tons of fun and now I'm a big fan of the technique."*

COMPETITION RULES Can be viewed in full here: [www.gathered.how/competition-terms-and-conditions](http://www.gathered.how/competition-terms-and-conditions)



When you have finished with this magazine please recycle it.



MIX  
From responsible  
sources  
FSC® C015155

The copyright for the patterns in this magazine is owned by or licensed to Our Media Company Bristol Limited and is for readers' personal use only. Please do not share patterns online (even for free) or copy them multiple times without our permission. Where selling crafts based on these patterns is permitted (usually only to raise funds for charity), we'll say so on the page. All toys sold in Great Britain and Northern Ireland must meet the requirements set out in the Toy (Safety) Regulations 2011. You must take all necessary steps to comply with this important legislation, including applying any applicable conformity marking. For more information, visit [www.gov.uk/government/publications/toys-safety-regulations-2011](http://www.gov.uk/government/publications/toys-safety-regulations-2011).

© Simply Knitting is published by Our Media Ltd registered in England and Wales. The registered office of Our Media Limited is at Eagle House, Bristol BS1 4ST. All information contained in this magazine is for information only and is, as far as we are aware, correct at the time of going to press. Our Media Ltd cannot accept any responsibility for errors or inaccuracies in such information. Readers are advised to contact manufacturers and retailers directly with regard to the price of products/services referred to in this magazine. If you submit unsolicited material to us, you automatically grant Our Media Ltd a licence to publish your submission in whole or in part in all editions of the magazine, including licensed editions worldwide and in any physical or digital format throughout the world. Any material you submit is sent at your risk. Although every care is taken, neither Our Media Ltd nor its employees agents or subcontractors shall be liable for loss or damage. Printed in the UK by William Gibbons. Distributed by Frontline.

Our Media Company is working to ensure that all of its paper comes from well-managed, FSC®-certified forests and other controlled sources. This magazine is printed on Forest Stewardship Council® (FSC®) certified paper. This magazine can be recycled, for use in newspapers and packaging. Please remove any gifts, samples or wrapping and dispose of them at your local collection point.

Knits for autumn  
and beyond!

Gorgeous  
GIFT  
KNITS

CAST ON A FUN FRIEND

SOFT & SQUISHY  
FROGGY  
CUSHION

Spruce up your  
lily pad with  
Amanda Berry's  
latest design!

# TOP NOTCH

This garter stitch collar has a playful bouclé texture. By **Becca Parker**



## IMPROVE YOUR SKILLS

### YOU WILL NEED

- World of Wool Hoop Bouclé (DK, 75% mohair, 20% wool, 5% nylon; 50g/110m)  
1 ball of Bluejay
- A pair of 4mm needles
- Two 3.5mm double-pointed needles (DPNs)

### TENSION

18 sts and 36 rows to measure 10x10cm (4x4in) over garter st using 4mm needles

### ABBREVIATIONS

For a full list see page 79

### MEASUREMENTS

10cm (4in) x 44cm (17½in) at widest point without ties

### WHERE TO BUY

- For yarn stockists contact World of Wool on 03300 564888 [www.worldofwool.co.uk](http://www.worldofwool.co.uk)



## COLLAR WITH BOW

**Note** The collar is worked flat from the top down. Stitches are picked up and knitted for the i-cord ties.

### COLLAR

**Cast on** 62 sts using 4mm needles.

**Rows 1 to 4** Knit. [62 sts]

**Row 5** K1, M1, (K15, M1) 3 times, K1. [66 sts]

**Row 6** K1, M1, (K16, M1) 3 times, K1. [70 sts]

**Row 7** K1, M1, (K17, M1) 3 times, K1. [74 sts]

**Row 8** K1, M1, (K18, M1) 3 times, K1. [78 sts]

**Row 9** Knit.

Repeat Row 9 until work measures 10cm from cast-on edge.

**Cast off** loosely. Fasten off and weave in ends.

### TIES (MAKE 2)

One tie is added to the top of each short edge. They are worked as i-cords.

Using 3.5mm DPNs, pick up 2 sts at the top of one short edge.

**Row 1** K1, M1, K1. Do not turn. [3 sts]

Slide the stitches to the other end of the needle and continue.

**Row 2** Knit. Do not turn.

Slide the stitches to the other end of the needle and continue.

Rep Row 2 until tie measures 30cm in length.

Fasten off and weave in ends. ●

# LOVEWOOL N°. 19



[rico-design.de/en/home/](https://rico-design.de/en/home/)



PROUD TO SUPPORT  
YOUR YARN SHOP

[RICO-DESIGN.DE/EN/HOME/](https://RICO-DESIGN.DE/EN/HOME/)



Our brand new Lovewool No. 19 inspires with 58 beautiful designs in four colour worlds. The knitted pieces from our new autumn/winter collection are made with both completely new yarns and new colours of our popular classics. High-quality fibres such as alpaca, mohair and merino combine with trendy knit-in-threads. Discover classic, modern jumpers, jackets and more from our new magazine for only £7.99 now!

follow us on



kingcole

# Truffle GLITZ



01756 703 670 [kingcole.com](http://kingcole.com) [enquiries@kingcole.com](mailto:enquiries@kingcole.com)

     
KNIT • FOLLOW • SHARE



# MISSED AN ISSUE?



Catch up on what you've missed in *Simply Knitting* by downloading a recent issue or rediscover one of our earlier issues



## ISSUE 254 SEPTEMBER

- \* Cable and eyelet T-shirt
- \* Cute panda socks
- \* Kids' seaside jumper
- \* Men's grandad cardigan
- \* Super-simple cowl
- \* Diamond lace cardigan
- \* Five-piece space playset
- \* Kids' ribbed cardigan
- \* Crab keyring
- \* Chunky lace tunic
- \* Honey bee mobile
- \* Easy knit shrug
- \* Mosaic patchwork blanket
- \* PLUS Classic Knits by Sarah Hatton pattern book



## ISSUE 253 AUGUST

- \* Colour block jumper
- \* Petal bag
- \* Kids nautical jumper
- \* Roller boot tea cosy
- \* Men's buttoned vest
- \* Kids' string-bobble jumper
- \* Beach hut cushion
- \* Rowan longline cardi
- \* Toy aeroplane
- \* Circus stripes jumper
- \* Kindle cover
- \* PLUS Summer Knits pattern book



## ISSUE 252 JULY

- \* Reversible V-neck jumper
- \* Garter stitch shawl
- \* Spots and stripes kids' jumper
- \* Men's striped jumper
- \* Cropped cardi
- \* Doris the Donkey
- \* Kid's floral jumper
- \* Mosaic T-shirt
- \* Pompom rucksack
- \* Lace-edged tank top
- \* PLUS Knitted Gifts pattern book



## ISSUE 251 JUNE

- \* Lace-sleeved jumper
- \* Sheep socks
- \* Kids' rainbow jumper
- \* Men's buttoned vest
- \* Cable cushion
- \* Ladies' cropped jumper
- \* Work vehicle toys
- \* Stripy tank top
- \* Baby colour-block jumper
- \* Bird-feet booties
- \* Doughnut cushion
- \* PLUS Cookies & Cupcakes pattern book



## ISSUE 250 MAY

- \* Cable jumper
- \* Kids' floral cardi
- \* Party puppy & Champagne
- \* Men's shawl-collar jumper
- \* Yoga lady tea cosy
- \* Boxy cardi
- \* Kids' garter stitch jumper
- \* Gaudi blanket
- \* Flower brooch
- \* Fish cushion
- \* Brioche jumper
- \* PLUS Family Knits collection pattern book

# RETURN TO THE APP FOR EARLIER BACK ISSUES



## ISSUE 249 APRIL

- \* Striped jumper
- \* Ladder stitch bag
- \* Kids' panda jumper
- \* Men's twist-stitch jumper
- \* Cable coatigan
- \* Viking playset
- \* Stashbuster basket
- \* Baby cardi
- \* Duckling tea cosy
- \* Mosaic cushion
- \* Rowan bird cardi
- \* V-neck jumper
- \* PLUS Fair Isle Wattle pattern book



## ISSUE 248 MARCH

- \* Pretty tartan jumper
- \* Floral socks
- \* Kids' denim jacket
- \* Men's two-tone jumper
- \* Easter bunny box
- \* Rowan two-way cardi
- \* Cute Easter toys
- \* Kids' zebra jumper
- \* Rowan cardigan
- \* Rabbit door stop
- \* Teddy cushion
- \* Make-up bag
- \* PLUS cable pattern book



## ISSUE 247 FEBRUARY

- \* Block-colour cardigan
- \* Project bags
- \* Kids' puppy-love jumper
- \* Men's brickwork jumper
- \* Lace and cable jumper
- \* Paw print socks
- \* Cat and dog toys
- \* Floral hot water bottle cover
- \* Rowan cardi
- \* Monochrome kids' hat
- \* Chameleon toy
- \* PLUS Baby Socks pattern book



## ISSUE 246 JANUARY

- \* Lace jumper
- \* Rowan shawl
- \* Kids' cardigan
- \* Men's Fair Isle jumper
- \* Polar bear portrait
- \* Lace baby beanie
- \* Shawl-collar cardigan
- \* Flowerbed draught excluder
- \* Stegosaurus tea cosy
- \* Lattice-sleeved cable jumper
- \* Play cube
- \* PLUS The Sheep Collection pattern book



## ISSUE 245 DECEMBER

- \* Frill and lace jumper
- \* Hat and scarf set
- \* Kids' melting snowman jumper
- \* Men's Fair Isle jumper
- \* Genie and lamp tea cosy
- \* Snowy owl
- \* Fairy tree decorations
- \* Santa sack and stocking set
- \* Snowman baby booties
- \* Kids' Bergère cable jumper
- \* PLUS Winter Knits pattern book



## ISSUE 244 CHRISTMAS

- \* Fair Isle snowflake jumper
- \* Simple lace shawl
- \* Elmer™ hot water bottle
- \* Kids' peeking penguin jumper
- \* Advent calendar knit-along (final part)
- \* Wandering cable jumper
- \* Festive mug hugs
- \* Santa sack and stocking set
- \* Kids' Scandi jumper
- \* PLUS extra Burda pattern mag



## ISSUE 243 NOVEMBER

- \* Christmas robin jumper
- \* Fairy lights necklace
- \* Kids' yoked jumper
- \* Christmas Peter Rabbit™
- \* Santa's sleigh bunting
- \* Men's cable cardi
- \* Advent calendar KAL (part 2)
- \* Elegant lace cardigan
- \* Fairy Christmas tree topper
- \* Mug hugs
- \* PLUS Crafts for Christmas & Festive Knits books



## ISSUE 242 OCTOBER

- \* V-neck tank top
- \* Fair Isle beanie
- \* Kids' monkey jumper
- \* Men's roll-neck jumper
- \* Mosaic stitch cushion cover
- \* Remembrance soldier
- \* Boot toppers
- \* Eyelet cardigan
- \* Advent calendar KAL (part 1)
- \* Squishy turtle
- \* PLUS! Black Sheep Wools pattern book

EXCLUSIVE TO  
*Simply*  
Knitting

# Welcome to Fairytland

Create a whimsical fairy house and charming fairies  
with our delightful knitting pattern collection

5  
fun-to-knit  
patterns!



*“Dreamy knits make great gifts!”*

By Sachiyo Ishii

# Welcome to Fairyland

*"There's plenty of room for creativity in this project. Unleash your imagination and craft a variety of fairies and flowers in different colours"*

SACHIYO ISHII, DESIGNER



## Hello!

Welcome to  
Fairyland – it's such  
a delightful place...

Our extra pattern collection this month features a gorgeous knitted fairy house four charming fairies named Daisy, Cosmos, Pansy, and Dandelion and four pretty flowers. Each fairy is lovingly designed with intricate details and pastel colours, bringing a touch of magic to your knitting this month. Whether you're an experienced knitter or just starting, these patterns will inspire your creativity and bring joy to your crafting. We hope you enjoy making this sweet characterful playset as much as we enjoyed bringing it to you.

Happy knitting!

*Sophie*

**Sophie Jordan**  
Deputy Editor

### GET IN TOUCH!

Write to us at *Simply Knitting* magazine,  
Our Media, Eagle House, Bristol BS1 4ST or email  
us at [simplyknitting@ourmedia.co.uk](mailto:simplyknitting@ourmedia.co.uk).

Find us on Instagram @simplyknittingmag or  
on Facebook.com/SimplyKnitting.



10





*“Open the door onto a new  
knitting adventure...”*





## IMPROVE YOUR SKILLS

### YOU WILL NEED

- World of Wool Fluff

DK (100% wool,  
50g/115m)  
1 ball of each

**Yarn A** Velvet Mousse  
(97)

**Yarn B** Powder Puff (76)

**Yarn C** Scatter Cushion  
(26)

**Yarn D** Bobble Hat (57)

**Yarn E** Egg Nog (04)

**Yarn F** Bath Bubble  
(01)

**Yarn G** Spa Slipper  
(84)

**Yarn H** Momma Bear  
(18)

**Yarn J** Oven Muffin (12)

- A pair of 3mm needles
- A pair of 4mm needles
- 3mm crochet hook
- Stitch holder
- Toy filling
- 4 pairs of mushroom-shaped amigurumi eye beads, 4mm
- All-purpose sewing needle
- Cotton thread
- Lightweight floral wire
- Cardboard
- 25mm and 45mm

pom-pom makers

- Liquid glue
- Pliers
- Pink pastel crayon or cosmetic

### TENSION

23 sts and 31 rows  
to measure 10x10cm  
(4x4in) over st st using  
3mm needles

### MEASUREMENTS

**House** 23cm (9in) tall

**Fairies** 12cm (4¾in) tall

### ABBREVIATIONS

For a full list see page 79  
in *Simply Knitting* mag

### TOP TIP

For an easy pom-pom tutorial, head over to [www.gathered.how](http://www.gathered.how). Search 'how to make a pom-pom'.

### WHERE TO BUY

- For stockists, call World of Wool 03300 564888, or [www.worldofwool.co.uk](http://www.worldofwool.co.uk)

Not suitable for children under three years old due to small parts.

## FAIRY PLAYSET

**Notes** If you don't have pom-pom makers, use a fork to make smaller pom-poms and cardboard circles to make larger pom-poms. Leave long ends at the beginning and end for sewing. Sew seams with RS facing and using mattress stitches unless instructed otherwise.

## FAIRY HOUSE

### MAIN BODY

Start at base.

**Cast on** 12 sts using 3mm needles and Yarn A.

**Row 1** (WS) Purl.

**Row 2** (K1, kfb) 3 times, (kfb, K1) 3 times. [18 sts]

**Row 3 and foll WS rows** Purl.

**Row 4** (K2, kfb) 3 times, (kfb, K2) 3 times.  
[24 sts]

**Row 6** (K3, kfb) 3 times, (kfb, K3) 3 times.  
[30 sts]

**Row 8** (K4, kfb) 3 times, (kfb, K4) 3 times.  
[36 sts]

**Row 10** (K5, kfb) 3 times, (kfb, K5) 3 times.

[42 sts]

**Row 12** (K6, kfb) 3 times, (kfb, K6) 3 times.

[48 sts]

**Row 14** (K7, kfb) 3 times, (kfb, K7) 3 times.

[54 sts]

**Row 16** (K8, kfb) 3 times, (kfb, K8) 3 times.

[60 sts]

**Row 18** (K9, kfb) 3 times, (kfb, K9) 3 times.

[66 sts]

**Row 20** (K10, kfb) 3 times, (kfb, K10) 3 times.

[72 sts]

**Row 21** Purl.

**Row 22** (bottom edge) Purl.

**Rows 23 to 49** Starting on a WS purl row, work in st st.

**Row 50** (K10, k2tog) 3 times, (k2tog, k10) 3 times. [66 sts]

**Row 51 and foll WS rows** Purl.

**Row 52** (K9, k2tog) 3 times, (k2tog, K9) 3 times.  
[60 sts]

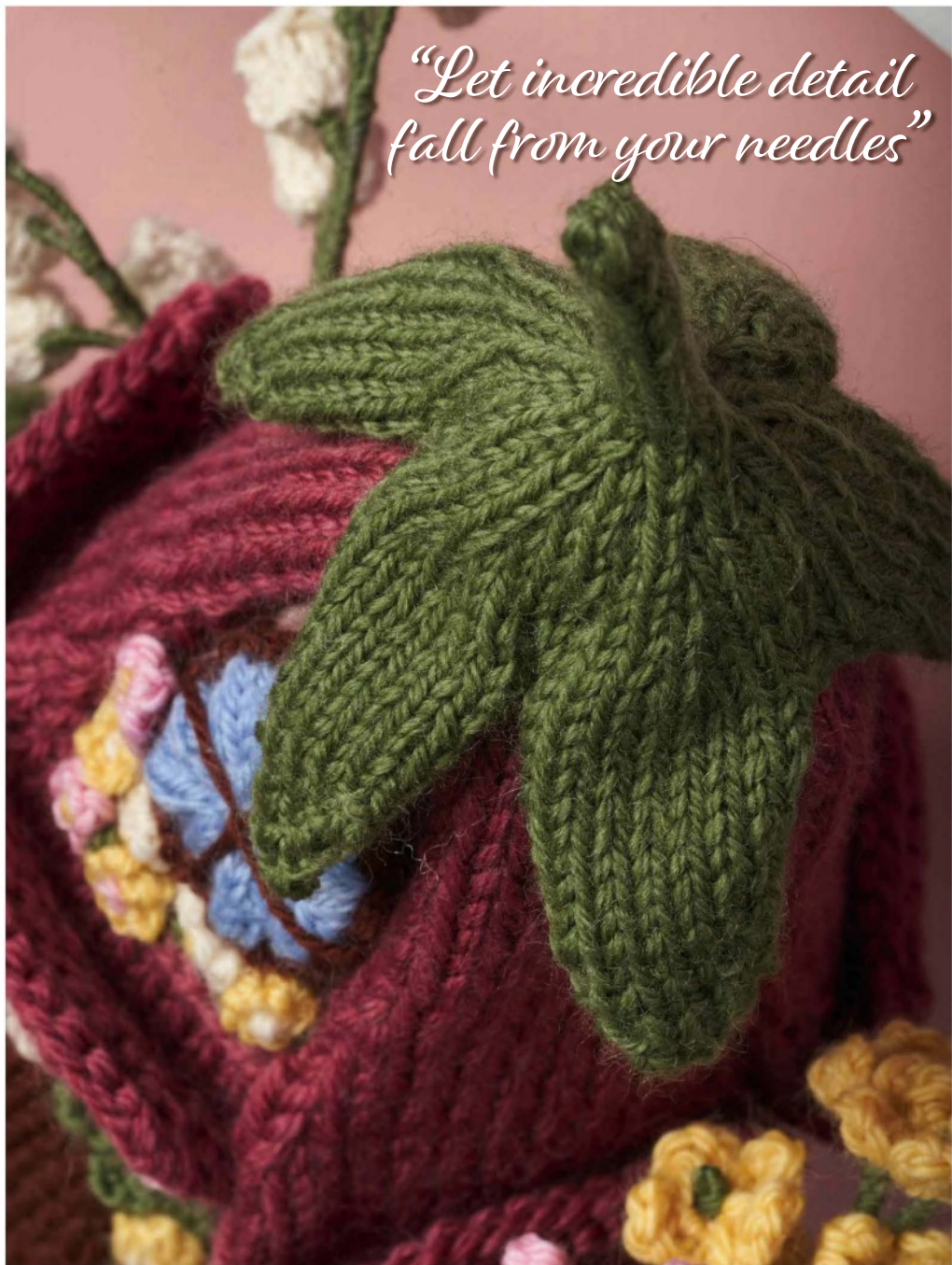
**Row 54** (K8, k2tog) 3 times, (k2tog, K8) 3 times.  
[54 sts]

**Row 56** (K7, k2tog) 3 times, (k2tog, K7) 3 times.



*“...and create flowers  
in the prettiest pastel shades!”*

*“Let incredible detail  
fall from your needles”*



[48 sts]

**Rows 57 to 65** Starting on a WS purl row, work in st st.

**Row 66** (K6, k2tog) 3 times, (k2tog, K6) 3 times. [42 sts]

**Rows 67 to 73** Starting on a WS purl row, work in st st.

**Row 74** (K5, k2tog) 3 times, (k2tog, K5) 3 times. [36 sts]

**Rows 75 to 79** Starting on a WS purl row, work in st st.

**Row 80** (K4, k2tog) 3 times, (k2tog, K4) 3 times. [30 sts]

**Rows 81 to 85** Starting on a WS purl row, work in st st.

**Row 86** (K3, k2tog) 3 times, (k2tog, K3) twice. [24 sts]

**Rows 87 to 89** Starting on a WS purl row, work in st st.

**Row 90** (K2tog) 12 times. [12 sts]

Break yarn and thread through rem sts. Pull tight to fasten.

## ROOF PETALS (MAKE 4)

Start at base.

**Cast on** 10 sts using 4mm needles and Yarn B HELD DOUBLE.

**Row 1** (RS) K1, kfb, knit to last 2 sts, kfb, k1. [2 sts inc'd]

**Row 2** Knit.

**Row 3** Rep Row 1. [14 sts]

**Row 4** Knit.

**Rows 5 to 14** Starting on a RS knit row, work in st st.

**Row 15** K1, k2tog, knit to last 3 sts, k2tog, K1. [2 sts dec'd]

**Rows 16 to 20** Starting on a WS purl row, work in st st.

**Row 21** Rep Row 15. [10 sts]

**Rows 22 to 34** Starting on a WS purl row, work in st st.

**Row 35** Rep Row 15. [8 sts]

**Cast off.**

## FRONT CENTRE ROOF PETAL

Work as given for Roof Petals until Row 10 has

been worked.

**Cast off.**

## ROOF LEAVES

Start at tip.

**\*\*Cast on** 2 sts using 3mm needles and Yarn C.

**Row 1** (WS) Purl.

**Row 2** (Kfb) twice. [4 sts]

**Row 3 and all WS rows** Purl.

**Rows 4, 6 and 8** K1, kfb, knit to last 2 sts, kfb, K1. [2 sts inc'd]

**Rows 9 to 19** Starting on a WS purl row, work in st st.

Break yarn and leave these 10 sts on a holder. Rep from \*\* 4 more times to create 5 leaves in total.

With RS facing, return all 50 held sts to 3mm needles.

**Row 20** (RS, joining) \*K3, (k2tog) twice, K3; rep from \* 4 more times. [40 sts]

**Row 21 and all WS rows** Purl.

**Row 22** (K2, k2tog) 5 times, (k2tog, K2) 5 times. [30 sts]

**Row 24** (K3, k2tog) 3 times, (k2tog, K3) 3 times. [24 sts]

**Row 26** (K2tog) 12 times. [12 sts]

**Row 28** (K1, k2tog) twice, (k2tog, K1) twice. [8 sts]

**Rows 29 to 37** Starting on a WS purl row, work in st st.

**Row 38** K2tog, (K1, k2tog) twice. [5 sts]

**Rows 39 to 40** Starting on a WS purl row, work in st st.

Break yarn and thread through rem sts. Pull tight to fasten.

## WINDOW

**Cast on** 40 sts with 3mm needles and Yarn H.

Break Yarn H and join Yarn D.

**Row 1** (RS) (K2, k2tog) 5 times, (k2tog, k2) 5 times. [30 sts]

**Row 2** Purl.

**Row 3** (K1, k2tog) 5 times, (k2tog, K1) 5 times. [20 sts]

**Row 4** Purl.



**Row 5** (K2tog) 10 times. [10 sts]  
Break yarn and thread through rem sts. Pull tight to fasten.

## DOOR

**Cast on** 14 sts with 3mm needles and Yarn H.  
**Rows 1 to 17** Starting on a WS purl row, work in st st.  
**Row 18** (RS) K1, k2tog, knit to last 3 sts, k2tog, K1. [2 sts dec'd]  
**Row 19** Purl.  
**Row 20** Rep Row 18. [10 sts]  
**Row 21** P2tog, P1, pass 2nd st on RH needle over first, **cast off** all sts to last 2 sts, p2tog, pass 2nd st on RH needle over first and fasten off.

## DOORKNOB

**Cast on** 8 sts using 3mm needles and Yarn B.  
**Row 1** (WS) (P2tog) 4 times. [4 sts]  
Break yarn and thread through rem sts. Pull tight to fasten.

## FLOWERS FOR WALL (MAKE MANY)

**Cast on** 8 sts using 3mm needles and Yarn D, E, F or G.  
Break yarn and thread through rem sts. Pull tight to fasten.

## DOOR LEAVES

Using 3mm needles and Yarn C.

**Row 1** (RS) \***Cast on** 4 sts, **cast off** 3 sts purlwise (1 loop rem on RH needle); rep from \* 11 more times (12 leaves made).  
Fasten off.

## LILY OF THE VALLEY FLOWER (MAKE 8)

**Cast on** 12 sts using 3mm needles and Yarn F.  
**Row 1** (WS) \*P2, S1l; rep from \* to end.  
**Row 2** \*K2, S1l; rep from \* to end.  
**Row 3** Rep Row 1.  
**Row 4** Knit.  
Break yarn and thread through rem sts. Pull tight to fasten.

## LILY OF THE VALLEY LEAF (MAKE 2)

**Cast on** 6 sts using 3mm needles and Yarn C.  
**Row 1** (WS) Purl.  
**Row 2** K1, kfb, knit to last 2 sts, kfb, K1. [8 sts]  
**Rows 3 to 16** Starting on a WS purl row, work in st st.  
**Row 17** P to last 3 sts, p2tog, P1. [1 st dec'd]  
**Row 18** K to last 3 sts, k2tog, K1. [1 st dec'd]  
**Rows 19 to 20** Rep Rows 17 to 18. [4 sts]  
**Row 21** [P2tog] twice.  
Pass second st over first and fasten off.

## LARGE SPRAY FLOWERS (MAKE MANY)

With crochet hook and Yarn E or G, \*make 5 chain, insert hook into first chain, yarn around hook, pull through both loops; rep from \* 4 more times. Fasten off.

## SPRAY LEAF

Work as given for Lily of the Valley Leaf.

## LARGE POMPOM FLOWER (MAKE 4)

Using Yarn G, work as given for Large Spray Flowers.

## SMALL POMPOM FLOWER (MAKE 4)

Using Yarn D, work as given for Flowers for Wall.

## MAKING UP HOUSE

**1** With fastened-off yarn end of Main Body, sew seam halfway. With cast-on yarn end, work a gathering thread along cast-on edge and draw it

up tightly. Sew base seam as far as bottom edge.

**2** Place a cardboard circle that matches base size into bottom of Main Body. Sew seam halfway and stuff. Thread Yarn A and insert needle from Body opening, bring it out at centre of base and pierce base back and forth to flatten it. Close remaining Body seam.

**3** Attach Roof Petals, starting with 2 side petals, then 2 back petals and then Front Centre Petal, using photo as a guide.

**4** Attach Window and embroider lines in a cross shape to denote windowpanes.

**5** With fastened-off yarn end of Roof Leaves, sew seam and insert stuffing. Attach Roof Leaves to top of house.

**6** Attach Door and Doorknob to house.

**7** Attach Door Leaves around Door and add Flowers around Door and Window, embroidering contrasting French knots at centre of each flower.

**8** Embroider leaves beneath Window.

**9** With Yarn C, make two 45mm pompoms and attach one to each side of house. Attach Large and Small Pompom Flowers to the pompoms, working contrasting French knots in the centres.

**10** To create Lily of the Valley, start by cutting a 5cm length of floral wire and bend one end to create a small loop. Wrap loop with a knitted Flower, securing it tightly with yarn end. Attach Flower to wire by threading it through loop and sewing Flower seam. Next, knot a length of Yarn C and pierce Flower centre, pulling yarn through. Wrap wire with yarn, occasionally applying liquid glue to prevent slipping. Repeat for second Flower, combining its stem with first. Continue joining flowers as desired. Wrap Leaf around wire stems and secure it. Finally, attach stem to side of house.

**11** To create Flower Spray, prepare wire as for Lily of the Valley and wrap loop end with Flower. Secure Flower using yarn end and stitch Flower ends tog. Join Yarn C and wrap wire while periodically applying glue. Combine stems by wrapping the wires tog. Attach Leaf at base of Flowers. Secure Flower stems to house.





## FLOWER FAIRY

### BASIC BODY (MAKE 1 IN EACH OF YARNS B, D, E AND G)

Start at base.

**Cast on** 10 sts using 3mm needles.

**Row 1** (WS) Purl.

**Row 2** (Kfb) 10 times. [20 sts]

**Row 3** Purl.

**Row 4** K2, (kfb, K2) 6 times. [26 sts]

**Row 5** Purl.

**Row 6** (bottom edge) Purl.

**Rows 7 to 20** Starting on a WS purl row, work in st st.

**Row 21** (P2tog) twice, (P2, p2tog) 5 times, p2tog. [18 sts]

Break Yarn B/D/E/G and join Yarn F.

**Rows 22 to 27** Starting on a RS knit row, work in st st.

**Row 28** (neck) (K1, k2tog) 3 times, (k2tog, K1) 3 times. [12 sts]

Break Yarn F and join Yarn J.

**Row 29** Purl.

### HEAD

**Row 30** (K1, kfb) 3 times, (kfb, K1) 3 times. [18 sts]

**Rows 31 to 35** Starting on a WS purl row, work in st st.

**Row 36** K3, (k2tog, K1) 4 times, K3. [14 sts]

**Rows 37 to 39** Starting on a WS purl row, work in st st.

**Row 40** P2, (p2tog, P2) 3 times. [11 sts]

Break yarn and thread through rem sts. Pull tight to fasten.

### ARM (MAKE 2 PER FAIRY)

**Cast on** 12 sts with 3mm needles and yarn to match skirt.

**Row 1** (WS) Purl.

**Row 2** (K1, k2tog) twice, (k2tog, K1) twice. [8 sts]

**Row 3** (cuff) Knit.

Break yarn and join Yarn J.

**Row 4** K1, k2tog, K2, k2tog, K1. [6 sts]

**Rows 5 to 9** Starting on a WS purl row, work in st st. Break yarn and thread through rem sts. Pull tight to fasten.

### MAKING UP FAIRY

**1** With fastened-off yarn end of Body, sew Head seam as far as neck. With cast-on yarn end, work a gathering thread along cast-on edge and draw it up tightly. Sew base seam and Body seam leaving a gap for stuffing. Stuff Body, avoiding overfilling neck area. Close rem seam.

**2** With yarn colour to match skirt, work a gathering thread along waist and draw thread gently to shape.

**3** Using Yarn F, work a gathering thread along neck and draw it up tightly.

**4** Seam each Arm and attach to Body without stuffing.

**5** With Yarn J, embroider a French knot for nose.

**6** Attach 4mm eye beads.

**7** Using Yarn E or H, embroider long backstitches to cover Head. Leave loops at sides of face every other stitch. To create long hair, cut loops and tie hair at sides of face or make plaits.

**8** Colour cheeks with pink pastel crayon.

### FLOWERS FOR THE FAIRIES

#### PINK COSMOS PETALS

**Cast on** 8 sts using 3mm needles and Yarn G.

**Row 1** (WS) Purl.

**Row 2** (Kfb) 8 times. [16 sts]





*“Use your stash to create additional flower fairies”*

*"Pack your handmade knits in a decorated gift box"*



**\*\*Row 3** P2, turn, leaving rem sts on hold. Cont on this set of 2 sts only.

**Rows 4 to 17** Starting on a RS knit row, work in st st. After final row, do not turn and leave these 2 sts on RH working needle. Do not break yarn.

Rep from \*\* 7 more times, creating 8 petals in total. After final petal has been made, turn work.

**Row 18** (join) Working across all sts, (k2tog) 8 times. [8 sts]

Break yarn and thread through rem sts. Pull tight to fasten.

### PINK COSMOS CENTRE

**Cast on** 12 sts using 3mm needles and Yarn H.

**Row 1** (WS) Purl.

**Row 2** (K2tog) 6 times. [6 sts]

Break yarn and thread through rem sts. Pull tight to fasten.

### PINK COSMOS RECEPTACLE

The Receptacle is the back of the Flower. Work as given for Pink Cosmos Centre using Yarn C. Leave a finishing end.

### MAKING UP

**1** With fastened-off yarn end of Flower, stitch sides of petals tog. With cast-on yarn end, work a gathering thread along cast-on edge and draw it up tightly. With fastened-off yarn end of Centre, sew seam and attach Centre to Flower.

**2** Cut a 10cm length of floral wire and bend one end to form a loop. Wrap loop with Receptacle yarn end and secure it to Receptacle.

**3** Sew Receptacle seam and attach Receptacle to reverse of Flower. Bring yarn to centre of Receptacle and wrap wire with yarn, intermittently applying glue.

### WHITE DAISY FLOWER

**Cast on** 8 sts using 3mm needles and Yarn F.

**Row 1** (WS) Purl.

**Row 2** (Kfb) 8 times. [16 sts]

**\*\*Row 3** P1, transfer st back to LH needle and P1 again, make chain in this manner to create 8 chains in total, leaving final loop on RH needle (1 petal made). Do not break yarn.



Rep from \*\* to create 16 petals in total.

After final petal has been made, turn work.

**Next row** (K2tog) 8 times. [8 sts]

Break yarn and thread through rem sts. Pull tight to fasten.

### WHITE DAISY CENTRE

**Cast on** 12 sts using 3mm needles and Yarn E.

**Row 1** (WS) (P2tog) 6 times. [6 sts]

Break yarn and thread through rem sts. Pull tight to fasten.

### WHITE DAISY RECEPTACLE

Work as given for Pink Cosmos receptacle.

### MAKING UP

Make up as given for Pink Cosmos.

### PANSY FRONT PETALS

**Cast on** 6 sts using 3mm needles and Yarn E.

**Row 1** (WS) Purl.

**Row 2** (Kfb) 6 times. [12 sts]

**\*\*Row 3** P4, turn, leaving rem sts on hold. Cont on this set of 4 sts only.

**Rows 4 to 9** Starting on a RS knit row, work in st st. After final row, do not turn and leave these 4 sts on RH working needle. Do not break yarn.

Rep from \*\* twice more, creating 3 petals in total. After final petal has been made, turn work.



**Row 10** (join) Working across all sts, (k2tog) 6 times. [6 sts]  
Break yarn and thread through rem sts. Pull tight to fasten.

### PANSY BACK PETALS

**Cast on** 4 sts with 3mm needles and Yarn B.

**Row 1** (WS) Purl.

**Row 2** (Kfb) 4 times. [8 sts]

**\*\*Row 3** P4, turn, leaving rem sts on hold. Cont on this set of 4 sts only.

**Rows 4 to 9** Starting on a RS knit row, work in st st. After final row, do not turn and leave these 4 sts on RH working needle. Do not break yarn.

Rep from \*\* once more, creating 2 petals in total.

**Row 10** (join) (K2tog) 4 times. [4 sts]

Break yarn and thread through rem sts. Pull tight to fasten.

### PANSY RECEPTACLE

**Cast on** 12 sts using 3mm needles and Yarn C.

**Row 1** (WS) Purl.

**Row 2** (K2tog) 6 times. [6 sts]

Break yarn and thread through rem sts. Pull tight to fasten.

### MAKING UP

Using fastened-off yarn end of Front Petals, stitch side edges tog. With cast-on yarn end, work a gathering thread along cast-on edge and draw it up tightly. Flatten piece and sew all side edges tog. Repeat process for Back Petal piece. Place Front Petals on top of Back piece and sew them tog. With Yarn B, embroider lines on Front Petals and work a French knot at centre. Add stem following instructions given for Pink Cosmos.

### DANDELION FLOWER

Using Yarn E, make a 25mm pompom.

### DANDELION RECEPTACLE

**Cast on** 12 sts using 3mm needles and Yarn C.

**Rows 1 to 3** Starting on a WS purl row, work in st st.

**Row 4** (K2tog) 6 times. [6 sts]

Break yarn and thread through rem sts. Pull tight to fasten.

### MAKING UP

Prepare wire as for Pink Cosmos. Wrap loop with Receptacle piece and sew seam as far as cast-on edge. Pull yarn end out from centre of Receptacle. Encase pompom Flower and secure to Receptacle. Wrap wire with yarn, intermittently applying glue. ●



*“Seam your dolls with neat and tidy backstitch.”*



# Welcome to **Fairyland**

*Simply*  
**Knitting**

Presented with issue 255 of *Simply Knitting*

Printed in the UK