



MATERIALS

Lily® Sugar'n Cream® (2.5 oz/70.9 g; 120 yds/109 m)

Contrast A Hot Pink (01740) **1 ball**

Contrast B Hot Purple (01317) **1 ball**

Contrast C Hot Blue (01742) **1 ball**

Contrast D Hot Green (01712) **1 ball**

Contrast F Hot Orange (01628) **1 ball**

Contrast G Red (00095) **1 ball**

Lily® Sugar'n Cream® Scents (2 oz/56.7 g; 95 yds/86 m)

Contrast E Vanilla Bouquet (24003) **1 ball**

Size U.S. H/8 (5 mm) crochet hook **or size needed to obtain gauge.**

ABBREVIATIONS:

Approx = Approximately

Beg = Beginning

Ch = Chain(s)

Cont = Continue(ity)

Dc = Double crochet

Pat = Pattern

Rem = Remaining

Rep = Repeat

Rnd(s) = Round(s)

RS = Right side

Sc = Single crochet

Sl st = Slip stitch

Sp(s) = Space(s)

St(s) = Stitch(es)

Tog = Together

WS = Wrong side

Yoh = Yarn over hook

CROCHET | SKILL LEVEL: INTERMEDIATE

SIZES

To fit 4 cup (6 cup) tea pot.

GAUGE

13 sc and 14 rows = 4" [10 cm].

INSTRUCTIONS

COZY (Front and Back make alike).

Stripe Pat: Work 2 rows of each color in the following sequence: A, B, C, D, E, F, G, F, E, D, C, B, A.

(See Chart 1 on page 2).

With A, ch 29 (36).

1st row: (RS). 1 sc in 2nd ch from hook. 1 sc in each of next 2 ch. [Ch 10 (loop). Miss next ch. 1 sc in each of next 6 ch] 3 (4) times. Ch 10 (loop). Miss next ch. 1 sc in each of next 3 ch. Turn.

2nd row: Ch 1. 1 sc in each of next 3 sc. [Ch 10 (loop). Miss next ch-10 sp. 1 sc in each of next 6 sc] 3 (4) times. Ch 10 (loop). Miss next ch-10 sp. 1 sc in each of next 3 sc. Turn.

First 2 rows of Stripe Pat are complete.

Keeping cont of Stripe Pat, rep last row until work from beg measures approx 4 (5)" [10 (12.5) cm], ending with a WS row.

Shape Top: (See Chart 2 on page 2).

1st row: Ch 1. 1 sc in each of next 3 sc. [Ch 10 (loop). Miss next ch-10 sp. 1 sc in each of next 2 sc. Draw up a loop in each of next 2 sc. Yoh and draw through all loops on hook - sc2tog made. 1 sc in each of next 2 sc] 3 (4) times. Ch 10 (loop). Miss next ch-10 sp. 1 sc in each of next 3 sc. Turn.

2nd row: Ch 1. 1 sc in first sc. Sc2tog. [Ch 10 (loop). Miss next ch-10 sp. 1 sc in each of next 2 sc. Sc2tog. 1 sc in next sc] 3 (4) times. Ch 10 (loop). Miss next ch-10 sp. Sc2tog. 1 sc in last sc. Turn.

3rd row: Ch 1. 1 sc in each of first 2 sc. [Ch 10 (loop). Miss next ch-10 sp. 1 sc in each of next 4 sc] 3 (4) times. Ch 10 (loop). Miss next ch-10 sp. 1 sc in each of last 2 sc. Turn.

4th row: Ch 1. 1 sc in each of first 2 sc. [Ch 10 (loop). Miss next ch-10 sp. 1 sc in next sc. Sc2tog. 1 sc in next sc] 3 (4) times. Ch 10 (loop). Miss next ch-10 sp. 1 sc in each of last 2 sc. Turn.

5th row: Ch 1. 1 sc in each of first 2 sc. [Ch 10 (loop). Miss next ch-10 sp. 1 sc in each of next 3 sts] 3 (4) times. Ch 10 (loop). Miss next ch-10 sp. 1 sc in each of last 2 sc. Turn.



6th row: Ch 1. Sc2tog. [Ch 10 (loop). Miss next ch-10 sp. *Draw up a loop in each of next 3 sc. Yoh and draw through all loops on hook - sc3tog made*] 3 (4) times. Ch 10 (loop). Miss next ch-10 sp. Sc2tog. Turn.

Chaining loops: (See Chart 3).

Pick up ch-10 loops from 3rd and 4th rows and pull tog through ch-10 loops from 1st and 2nd rows.

Pick up ch-10 loops from 5th and 6th rows and pull tog through ch-10 loops from 3rd and 4th rows.

Pick up ch-10 loops from 7th and 8th rows and pull tog through ch-10 loops from 5th and 6th rows.

Rep in same manner for all ch-10 loops as shown in picture.

Next row: Ch 1. 1 sc in first st. (2 sc in 2 ch-10 loops formed after chaining. 1 sc in next st) 4 (5) times. 1 sc in last sc. Turn. 11 (14) sc.

Next row: Ch 1. 1 sc in first sc. (Sc2tog) 5 (7) times. 1 sc in next 1 (0) sc. Fasten off.

Sew seams 2½ (3¼)" [6 (8.5) cm] in from top and bottom edges for spout and handle openings.

Flower: (See Chart 4).

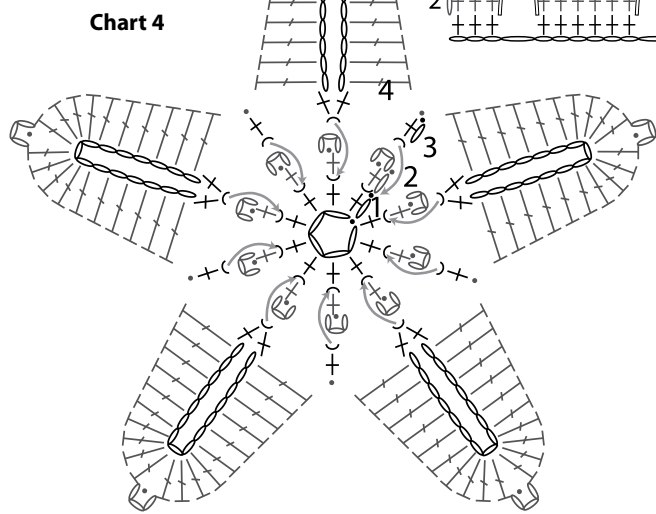
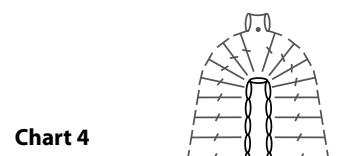
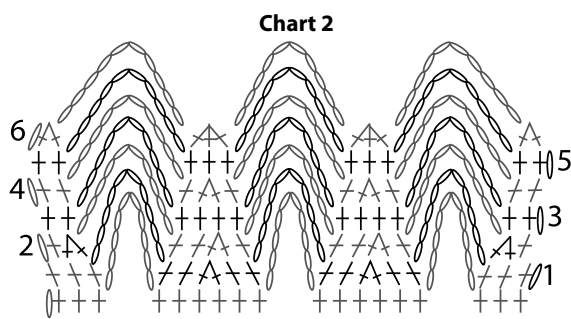
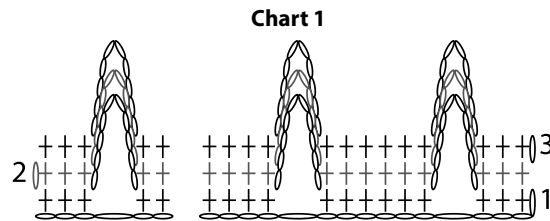
With D, ch 5. Join with sl st to first ch to form a ring.

1st rnd: Ch 1. 10 sc in ring. Join with sl st to first sc.

2nd rnd: Working into front loops only, ch 1. 1 sc in same sp as sl st. Ch 3. Sl st in top of last sc - picot made. *1 sc in next sc. Picot. Rep from * around. Join with sl st to first sc. Fasten off.

3rd rnd: Join D with sl st to any rem loop of 1st rnd. Working in rem loops of 1st rnd, ch 1. *1 sc in next sc. (1 sc. Ch 15. 1 sc) in next sc. Rep from * around. Join with sl st to first sc. (5 ch-15 loops).

4th rnd: *(10 dc. Picot. 10 dc) in next ch-15 sp. Miss next sc. Sl st in next sc. Rep from * around. Fasten off. Sew Flower to top of Tea Cozy.



- = chain (ch)
- = slip st (sl st)
- + = single crochet (sc)
- ⌋ = double crochet (dc)
- △ = sc2tog
- ⋈ = sc3tog
- ⓪ = picot
- ⌋ = worked in back loop
- ⌋ = worked in front loop